

# EAU Guidelines on Urological Trauma

N.D. Kitrey (Chair), F. Campos-Juanatey, P. Hallscheidt,  
E. Mayer, E. Serafetinidis, D.M. Sharma, M. Waterloos  
Guidelines Associates: H. Mahmud, K. Zimmermann  
Guidelines Office: N. Schouten

# TABLE OF CONTENTS

# PAGE

1.	INTRODUCTION	5
	1.1 Aim and objectives	5
	1.2 Panel composition	5
	1.3 Available publications	5
	1.4 Publication history	5
2.	METHODS	5
	2.1 Evidence sources	5
	2.2 Peer review	6
3.	EPIDEMIOLOGY, CLASSIFICATION & GENERAL MANAGEMENT PRINCIPALS	6
	3.1 Definition and Epidemiology	6
	3.2 Classification of trauma	6
	3.3 General management principals	6
	3.3.1 The Initial evaluation	6
	3.3.2 Polytrauma managed in major trauma centres leads to improved survival	7
	3.3.3 Damage control	7
	3.3.4 Mass casualty events and Triage	7
	3.3.5 The role of thromboprophylaxis and bed rest	7
	3.3.6 Antibiotic stewardship	7
	3.3.7 Urinary catheterisation	7
4.	UROGENITAL TRAUMA GUIDELINES	8
	4.1 Renal Trauma	8
	4.1.1 Epidemiology, aetiology and pathophysiology	8
	4.1.2 Evaluation	8
	4.1.3 Imaging: criteria for radiographic assessment	9
	4.1.3.1 Computed tomography	9
	4.1.3.2 Ultrasonography (US)	9
	4.1.3.3 Other imaging modalities	9
	4.1.3.3.1 Intravenous pyelography (IVP)	9
	4.1.4 Disease management	9
	4.1.4.1 Non-operative management	9
	4.1.4.1.1 Blunt renal injuries	9
	4.1.4.1.2 Penetrating renal injuries	10
	4.1.4.1.3 Selective angioembolisation	10
	4.1.4.1.4 Ureteral stenting and urinary catheterisation	10
	4.1.4.1.5 Repeat imaging (early)	11
	4.1.4.2 Surgical management	11
	4.1.4.2.1 Indications for renal exploration	11
	4.1.4.2.2 Operative findings and reconstruction	11
	4.1.5 Follow-up	11
	4.1.5.1 Complications	12
	4.1.6 Iatrogenic renal injuries	12
	4.1.7 Summary of evidence and recommendations for evaluation and management of renal trauma	12
	4.1.8 Treatment algorithms	14
	4.2 Ureteral Trauma	15
	4.2.1 Incidence	15
	4.2.2 Epidemiology, aetiology, and pathophysiology	15
	4.2.3 Diagnosis	16
	4.2.3.1 Clinical diagnosis	16
	4.2.3.2 Radiological diagnosis	16
	4.2.4 Prevention of iatrogenic trauma	16
	4.2.5 Management	16
	4.2.5.1 Proximal and mid-ureteral injury	17
	4.2.5.2 Distal ureteral injury	17

	4.2.5.3	Long segment ureteral injury	17
	4.2.5.4	Permanent urinary diversion/nephrectomy	17
	4.2.6	Summary of evidence and recommendations for the management of ureteral trauma	18
	4.2.7	Treatment algorithms	19
4.3		Bladder Trauma	19
	4.3.1	Classification	19
	4.3.2	Epidemiology, aetiology, and pathophysiology	19
	4.3.2.1	Iatrogenic bladder trauma (IBT)	20
	4.3.3	Diagnostic evaluation	20
	4.3.3.1	Cystography	21
	4.3.3.2	Cystoscopy	21
	4.3.4	Prevention	21
	4.3.5	Disease management	21
	4.3.5.1	Conservative management	21
	4.3.5.2	Surgical management	22
	4.3.5.2.1	Blunt non-iatrogenic trauma	22
	4.3.5.2.2	Penetrating non-iatrogenic trauma	22
	4.3.5.2.3	Iatrogenic bladder trauma	22
	4.3.6	Follow-up	22
	4.3.7	Summary of evidence and recommendations for bladder injury	22
4.4		Urethral Trauma	23
	4.4.1	Epidemiology, aetiology and pathophysiology	23
	4.4.1.1	Anterior male urethral injury	23
	4.4.1.2	Posterior male urethral injuries	23
	4.4.1.3	Female urethral injuries	24
	4.4.2	Evaluation	24
	4.4.2.1	Clinical signs	24
	4.4.2.2	Urethrography	24
	4.4.2.3	Cysto-urethroscopy	25
	4.4.2.4	Ultrasound and magnetic resonance imaging	25
	4.4.3	Disease Management	25
	4.4.3.1	Male anterior urethral injuries	25
	4.4.3.1.1	Immediate exploration and urethral reconstruction	25
	4.4.3.1.2	Urinary diversion	25
	4.4.3.2	Male posterior urethral injuries	25
	4.4.3.2.1	Emergency room management	25
	4.4.3.2.2	Early urethral management (less than six weeks after injury)	26
	4.4.3.2.2.1	Early re-alignment	26
	4.4.3.2.2.2	Early urethroplasty	27
	4.4.3.2.3	Deferred management (greater than three months after injury)	27
	4.4.3.2.4	Iatrogenic posterior injuries	27
	4.4.3.3	Female urethral injuries	27
	4.4.4	Summary of evidence and recommendations for the evaluation and management of urethral trauma	28
	4.4.5	Treatment algorithms	29
4.5		Genital Trauma	30
	4.5.1	Epidemiology, aetiology and pathophysiology	30
	4.5.2	Diagnostic evaluation	31
	4.5.2.1	Patient history and physical examination	31
	4.5.3	Imaging	31
	4.5.4	Disease management	32
	4.5.4.1	Animal bites	32
	4.5.4.2	Human bites	32
	4.5.4.3	Blunt penile trauma	32
	4.5.4.4	Penile fracture	32
	4.5.4.5	Penetrating penile trauma	32
	4.5.4.6	Penile avulsion injuries and amputation	33

4.5.4.7	Testicular dislocation	33
4.5.4.8	Haematocoele	33
4.5.4.9	Testicular rupture	33
4.5.4.10	Penetrating scrotal trauma	33
4.5.5	Complications	34
4.5.6	Follow-up	34
4.5.7	Summary of evidence and recommendations for evaluation and management of genital trauma.	34
5.	REFERENCES	35
6.	CONFLICT OF INTEREST	53
7.	CITATION INFORMATION	53

# 1. INTRODUCTION

## 1.1 Aim and objectives

The European Association of Urology (EAU) Guidelines Panel for Urological Trauma have prepared these guidelines in order to assist medical professionals in the management of urological trauma in adults. Paediatric trauma is addressed in the EAU Paediatric Urology Guidelines [1].

It must be emphasised that clinical guidelines present the best evidence available to the experts but following guideline recommendations will not necessarily result in the best outcome. Guidelines can never replace clinical expertise when making treatment decisions for individual patients, but rather help to focus decisions – also taking personal values and preferences/individual circumstances of patients into account. Guidelines are not mandates and do not purport to be a legal standard of care.

## 1.2 Panel composition

The EAU Urological Trauma Guidelines Panel consists of an international group of urologists and an interventional radiologist, all with particular expertise in urological trauma. All experts involved in the production of this document have submitted potential conflict of interest statements, which can be viewed on the EAU Website Uroweb: <http://uroweb.org/guideline/urological-trauma/?type=panel>.

## 1.3 Available publications

A quick reference document, the Pocket Guidelines, is available in print and on the EAU Website. This is an abridged version which may require consultation together with the full text version. A number of translated versions, alongside several scientific publications in European Urology, the Associations scientific journal, are also available [2-5]. All documents can be viewed through the EAU website: <http://uroweb.org/guideline/urological-trauma/>.

## 1.4 Publication history

The Urological Trauma Guidelines were first published in 2003. All sections of the 2023 Urological Trauma Guidelines have been fully updated. The next update of the Urological Trauma Guidelines will be published in 2025.

# 2. METHODS

## 2.1 Evidence sources

For the 2023 Urological Trauma Guidelines, new and relevant evidence has been identified, collated and appraised through a structured assessment of the literature. A broad and comprehensive literature search, covering all sections of the Urological Trauma Guidelines was performed. Databases searched included Medline, EMBASE, and the Cochrane Libraries, covering a time frame between May 1<sup>st</sup>, 2021, and April 29<sup>th</sup>, 2022. A total of 1,236 unique records were identified, retrieved and screened for relevance. A detailed search strategy is available online: <http://uroweb.org/guideline/urological-trauma/?type=appendices-publications>. The majority of identified publications were comprised of case reports and retrospective case series. The lack of high-powered randomised controlled trials (RCTs) makes it difficult to draw meaningful conclusions. The panel recognises this critical limitation.

Recommendation within the Guidelines are developed by the panels to prioritise clinically important care decisions. The strength of each recommendation is determined by the balance between desirable and undesirable consequences of alternative management strategies, the quality of the evidence (including certainty of estimates), and the nature and variability of patient values and preferences [6, 7]. This decision process, which can be reviewed in the strength rating forms which accompany each guideline statement, addresses a number of key elements:

1. the overall quality of the evidence which exists for the recommendation [8];
2. the magnitude of the effect (individual or combined effects);
3. the certainty of the results (precision, consistency, heterogeneity and other statistical or study related factors);
4. the balance between desirable and undesirable outcomes;
5. the impact of patient values and preferences on the intervention.

Strong recommendations typically indicate a high degree of evidence quality and/or a favourable balance of benefit to harm and patient preference. Weak recommendations typically indicate availability of lower quality evidence, and/or equivocal balance between benefit and harm, and uncertainty or variability of patient preference [9].

Additional information can be found in the general Methodology section of this print, and online at the EAU website; <http://www.uroweb.org/guideline/>. A list of associations endorsing the EAU Guidelines can also be viewed online at the above address.

## 2.2 Peer review

The Urological trauma Guidelines was peer reviewed prior to publication in 2019.

# 3. EPIDEMIOLOGY, CLASSIFICATION & GENERAL MANAGEMENT PRINCIPALS

## 3.1 Definition and Epidemiology

Trauma is defined as a physical injury or a wound to living tissue caused by an extrinsic agent. Worldwide, there are over four million injury-related deaths every year which constitute nearly 8% of all deaths [10]. About 25% of them are violence related. For young people (5 - 29 years old), three of the top five causes of death are injury-related (road traffic injuries, homicide, and suicide). Tens of millions more people suffer non-fatal injuries each year which lead to acute care visits, hospitalizations, and often result in temporary or permanent disability and the need for long-term physical and mental health care and rehabilitation. Twice as many males than females are killed each year because of injuries and violence [10].

Trauma is therefore a serious public health problem with significant social and economic costs. Considerable variation exists in the causes and the effects of traumatic injuries between geographical areas, as well as between low, middle, and high-income countries with about 90% of injury-related deaths occur in low- and middle-income countries [10].

## 3.2 Classification of trauma

Traumatic injuries are classified by the World Health Organization (WHO) into intentional (either interpersonal violence related, war-related or self-inflicted injuries), and unintentional injuries (mainly road traffic accidents/injury, falls, and other domestic accidents). Intentional trauma accounts for approximately half of the trauma-related deaths worldwide [11]. A specific type of unintentional injury is iatrogenic injury which occurs during therapeutic or diagnostic procedures by healthcare personnel. Traumatic insults are classified according to the basic mechanism of the injury into penetrating, when an object pierces the skin, and blunt injuries. Penetrating trauma is further classified according to the velocity of the projectile into:

1. high-velocity projectiles (e.g. rifle bullets - 800-1,000 m/sec);
2. medium-velocity projectiles (e.g. handgun bullets - 200-300 m/sec);
3. low-velocity items (e.g. knife stab).

High-velocity weapons inflict greater damage due to a temporary expansive cavitation that causes destruction in a much larger area than the projectile tract itself. In lower velocity injuries, the damage is usually confined to the projectile tract. Blast injury is a complex cause of trauma which includes blunt and penetrating trauma and burns.

The most commonly used classification grading system is the AAST (American Association for the Surgery of Trauma) injury scoring scale [12]. It is useful for managing renal trauma, but for the other urological organs, the injuries are commonly described by their anatomical site and severity (partial/complete).

## 3.3 General management principals

### 3.3.1 The Initial evaluation

The initial emergency assessment of a trauma patient is beyond the focus of these guidelines. It is usually carried out by emergency medicine and trauma specialised personnel following advanced trauma life support (ATLS) principles. Detailed further assessment involves cross-sectional imaging, laboratory analysis and specialist surgical input. The management of individual organ injury will follow in the sections below. Tetanus vaccine status should be assessed for all penetrating injuries.

### 3.3.2 ***Polytrauma managed in major trauma centres leads to improved survival***

Urological trauma is often associated with significant injuries in the polytraumatised patient [13]. Lessons from civilian trauma networks, military conflict, and mass casualty events have led to many advances in trauma care [14-16]. These include the widespread acceptance of damage control principles and trauma centralisation to major trauma centres staffed by dedicated trauma teams. The re-organisation of care to these centres has been shown to reduce mortality by 25% and length of stay by four days [14]. Urologists increasingly understand their role in the context of polytrauma with the ultimate aims of improving survivability and decreasing morbidity in these patients.

### 3.3.3 ***Damage control***

Damage control is a life-saving strategy for severely injured patients that recognises the consequences of the lethal triad of trauma - hypothermia, coagulopathy, and acidosis [17-19]. The first of a three phased approach consists of rapid control of haemorrhage and wound contamination. The second phase involves resuscitation in the intensive care unit (ICU), with the goal of restoring normal temperature, coagulation, and tissue oxygenation. The final stage involves definitive surgery when more time-consuming reconstructive procedures are performed in the stabilised patient [20]. Urological intervention needs to be mindful of the phase of management. Temporary abbreviated measures followed by later definitive surgery are required. Complex reconstructive procedures, including organ preservation, are not undertaken. The decision to enter damage control mode is taken by the lead trauma clinician following team discussion.

Urological examples include haemodynamically unstable patients due to suspected renal haemorrhage or pelvic fracture with associated urethral or bladder injury. The options of abdominal packing and temporary urinary drainage by ureteric, bladder or urethral catheterisation are valuable adjuncts to care.

### 3.3.4 ***Mass casualty events and Triage***

A mass casualty event is one in which the number of injured people and the severity of their injuries exceed the capacity of the facility and staff [21]. Triage, communication, and preparedness are important components for a successful response.

Triage after mass casualty events involves difficult moral and ethical considerations. Disaster triage requires differentiation of the few critically injured individuals who can be saved by immediate intervention from the many others with non-life-threatening injuries for whom treatment can be delayed and from those whose injuries are so severe that survival is unlikely in the circumstances [22, 23].

### 3.3.5 ***The role of thromboprophylaxis and bed rest***

Trauma patients are at high risk of deep venous thrombosis (DVT). Concerns about secondary haemorrhage result in prolonged post-injury bed rest DVT which effectively compounds this risk. Established prophylaxis measures reduce thrombosis and are recommended following systemic review [24]. However, the strength of evidence is not high and as yet there is no evidence to suggest that mortality or pulmonary embolism risk is reduced [25]. Compression stockings and low molecular weight heparins are favoured. The risk of secondary haemorrhage in isolated renal trauma is low and the practice of strict bed rest has waned in patients who are able to mobilise [26].

### 3.3.6 ***Antibiotic stewardship***

Single shot antibiotic doses are common in major trauma. The indication for continuing antibiotics is governed by injury grade, associated injuries and the need for intervention. Patients with urinary extravasation tend to be kept on antibiotics but there is no evidence base for this. Antibiotics should be avoided in lesser trauma e.g. Grade 1-3 renal trauma, and regular review should be undertaken for those continued on antibiotics.

### 3.3.7 ***Urinary catheterisation***

Prolonged catheterisation is required in all forms of bladder and urethral injury. Catheterisation is not necessary in stable patients with low-grade renal injury. Patients with heavy haematuria, who require monitoring or ureteric stenting, benefit from catheterisation. This can be removed once haematuria lightens and there is an improvement in the clinical situation. The shortest possible period of catheterisation is advised.

## 4. UROGENITAL TRAUMA GUIDELINES

### 4.1 Renal Trauma

#### 4.1.1 Epidemiology, aetiology and pathophysiology

Renal trauma is present in up to 5% of all trauma cases [27]. It is most common in young males and has an overall population incidence of 4.9 per 100,000 [28]. Most injuries can be managed non-operatively with successful organ preservation [29, 30].

Blunt injuries result from road traffic accidents/injury, falls, sporting injuries, and assault [31]. The kidney and/or hilar structures are directly crushed as a result. Less commonly, sudden deceleration may result in an avulsion injury affecting the vascular structures of the hilum or the ureteropelvic junction (UPJ).

Penetrating injuries are due to stab and gunshot wounds. They tend to be more severe and less predictable than blunt trauma. The prevalence is higher in urban settings [32]. Penetrating injury produces direct tissue disruption of the parenchyma, vascular pedicles, or collecting system. High-velocity bullets or fragments have the potential for greatest parenchymal destruction and are most often associated with multiple-organ injuries [33].

The most commonly used classification system is that of the AAST [12]. It is validated and predicts morbidity and the need for intervention [34, 35]. This remains the most useful of urological trauma classifications; however, the majority of Grade 1-4 injuries are now managed conservatively and debate has centred around updating the classification of high-grade injury i.e. identifying the injuries most likely to benefit from early angiographic embolisation, repair or nephrectomy [29, 36].

**Table 4.1.1: Extract of the AAST renal injury grading scale [37]**

Grade*	Type of injury	Description of injury
1	Haematoma and/or Contusion	Subcapsular non-expanding haematoma or parenchymal contusion without parenchymal laceration.
2	Haematoma	Non-expanding perirenal haematoma confined to Gerota fascia.
	Laceration	Renal parenchymal laceration $\leq$ 1 cm depth without urinary extravasation.
3	Laceration	Renal parenchymal laceration $\geq$ 1 cm depth without collecting system rupture or urinary extravasation. Any injury in the presence of a kidney vascular injury or active bleeding contained within Gerota fascia.
4	Laceration	Parenchymal laceration extending into urinary collecting system with urinary extravasation. Renal pelvis laceration and/or complete ureteropelvic disruption.
	Vascular	Segmental renal vein or artery injury. Active bleeding beyond Gerota fascia into the retroperitoneum or peritoneum. Segmental or complete kidney infarction(s) due to vessel thrombosis without active bleeding.
5	Laceration	Shattered kidney with loss of identifiable parenchymal renal anatomy.
	Vascular	Main renal artery or vein laceration or avulsion of renal hilum. Devascularised kidney with active bleeding.

\*Advance one grade for bilateral injuries up to Grade 3.

Note: The AAST renal injury scale was updated in 2018 and is presented in Table 4.1.1; however, all references included in this text are based on the AAST 1989 renal injury scale. The 2018 injury scale does not outperform the previous grading system in predicting bleeding and the need for treatment intervention and does not impact on the validity of the current recommendations [38].

#### 4.1.2 Evaluation

The evaluation of stable patients with suspected renal trauma is now based on a trauma protocol computed tomography (CT) scan, often performed prior to involvement of a urologist [39, 40]. It is important to consider all parameters in the evaluation of the patient and to understand the indications for scanning when these are not absolute. Indicators of injury include a direct blow to the flank or rapid deceleration event (fall, high-speed road traffic accidents). Special consideration should be given to pre-existing renal disease [41] or the injured solitary kidney [42]. Pre-existing abnormality e.g. hydronephrosis makes injury more likely following trauma [43].



Vital signs should be recorded throughout the initial evaluation and give the most reliable indication of the urgency of the situation. Physical examination may reveal flank bruising, stab wounds, or bullet entry or exit wounds and abdominal tenderness.

Urinalysis, haematocrit and baseline creatinine are required. Haematuria (visible or non-visible) is the key finding. However, major injury such as disruption of the UPJ, pedicle injuries, segmental arterial thrombosis and stab wounds may not have haematuria [44, 45]. Haematuria that is out of proportion to the history of trauma may suggest pre-existing pathology [46]. Urine dipstick quickly evaluates for haematuria, but false-negative results can range from 3-10% [47]. An increased creatinine level usually reflects pre-existing renal pathology.

#### **4.1.3 Imaging: criteria for radiographic assessment**

The goals of imaging are to grade the renal injury, document pre-existing renal pathology, demonstrate presence of the contralateral kidney and identify injuries to other organs. Haemodynamic status will determine the initial imaging pathway with unstable patients potentially requiring immediate intervention. The majority of patients with moderate to major trauma will have had a CT scan performed soon after presentation. In patients who have not had any imaging the indications for renal imaging are [31, 48-51]:

- visible haematuria;
- non-visible haematuria and one episode of hypotension;
- a history of rapid deceleration injury and/or significant associated injuries;
- penetrating trauma;
- clinical signs suggesting renal trauma e.g. flank pain, abrasions, fractured ribs, abdominal distension and/or a mass and tenderness.

##### **4.1.3.1 Computed tomography**

Computed tomography is the imaging modality of choice in stable patients. It is quick, widely available, and can accurately identify grade of renal injury [52], establish the presence of the contralateral kidney and demonstrate concurrent injuries to other organs. It is ideally performed as a three-phase study [53]:

1. The arterial phase assesses vascular injury and presence of active extravasation of contrast.
2. The nephrographic phase optimally demonstrates parenchymal contusions and lacerations.
3. The delayed phase imaging (five minutes) identifies collecting system/ureteric injury.

In practice, trauma patients usually undergo standardised whole-body imaging protocols and delayed phase imaging of the renal tract is not routinely performed. If there is suspicion that renal injuries have not been fully evaluated, delayed phase imaging is recommended. The rates of contrast-induced nephropathy seen in trauma patients is low [54].

##### **4.1.3.2 Ultrasonography (US)**

In the primary survey of a critically injured patient, FAST (Focused Assessment Sonography in Trauma) is used to identify hemoperitoneum as the cause of haemorrhage and hypovolemia. However, it is not routinely used for the assessment of solid organ injury as it is insensitive, operator dependant, does not define the injury well, and is inferior to CT. It is an option for follow-up [55-57].

##### **4.1.3.3 Other imaging modalities**

###### **4.1.3.3.1 Intravenous pyelography (IVP)**

Intravenous pyelography and radionuclide scans and magnetic resonance imaging (MRI) do not have a significant role in the trauma setting. The quality of one shot IVP is generally poor. Palpation of the contralateral (unaffected) kidney is a pragmatic surrogate of function [18].

The diagnostic accuracy of MRI in renal trauma is similar to that of CT [58, 59]. However, the logistical challenges of MRI make this modality impractical in acute trauma.

#### **4.1.4 Disease management**

##### **4.1.4.1 Non-operative management**

The non-operative management of renal trauma can be viewed as a “package of care”; a stepwise approach starting with conservative treatment, followed by minimally invasive and/or surgical exploration, if necessary. It should be noted that an algorithm for “package of care” will vary in different centres according to available interventions; however, the importance of escalation in treatment interventions should be emphasised [29]. This approach has likely resulted in the rate of nephrectomy for high-grade renal injuries decreasing over time [60].

#### 4.1.4.1.1 Blunt renal injuries

Haemodynamic stability is the primary criterion for the management of all renal injuries. Non-operative management has become the treatment of choice for most cases. In stable patients, this means a period of bed rest, serial blood tests, regular observation and re-imaging as indicated [26]. Primary conservative management is associated with a lower rate of nephrectomies, and no increase in immediate or long-term morbidity [61].

Grade 1-3 injuries are managed non-operatively [62, 63]. Grade 4 injuries are also mostly treated conservatively, but the requirement for subsequent intervention is higher [64]. Persistent urinary extravasation from an otherwise viable kidney after blunt trauma usually responds to stent placement and/or percutaneous drainage [65].

Grade 5 injuries often present with haemodynamic instability and major associated injuries. There is thus a higher rate of exploration and nephrectomy [66, 67]. However, several studies now support expectant management in patients with Grade 4 and 5 injuries [29, 30, 68-72]. Similarly, unilateral main arterial injuries or arterial thrombosis are normally managed non-operatively in haemodynamically stable patients with surgical repair reserved for bilateral artery injuries or injuries involving a solitary functional kidney [73]. Pre-hospital prolonged warm ischaemia usually results in irreparable damage and renal loss.

One study designed a nomogram to predict the need for an intervention to stop bleeding in high-grade renal trauma. Factors which increased risk of intervention were a haematoma size of > 12 cm, penetrating trauma, vascular contrast extravasation, pararenal haematoma extension, concomitant injuries, and shock [74].

#### 4.1.4.1.2 Penetrating renal injuries

Penetrating abdominal wounds have traditionally been managed surgically. However, selective non-operative management of penetrating abdominal wounds is now accepted following detailed assessment in stable patients [64, 75-77].

For renal injuries, the site of the wound, haemodynamic stability, and diagnostic imaging are the main determinants for intervention. The majority of low-grade stab wounds posterior to the anterior axillary line can be managed non-operatively in stable patients [78]. Grade 3 or higher injuries due to stab wounds in stable patients can be managed expectantly but warrant closer observation as the clinical course is more unpredictable and associated with a higher rate of delayed intervention [78, 79]. High-grade injuries, concomitant abdominal injuries and gunshot wounds are most likely to fail non-operative management [77]. A gunshot wound is an independent risk factor for nephrectomy in grade IV and V traumatic renal injuries, compared with stab wounds [80]. Overall, non-operative management of penetrating injuries in selected stable patients is associated with a successful outcome in up to 50% of stab wounds and up to 40% of gunshot wounds [30, 81-84].

#### 4.1.4.1.3 Selective angioembolisation

Selective angioembolisation (AE) has a key role in the non-operative management of blunt renal trauma in haemodynamically stable patients [85]. Currently there are no validated criteria to identify patients who require AE and its use in renal trauma remains variable. Accepted CT findings indicating the need for AE are active extravasation of contrast, arteriovenous fistula (AVF) and pseudo-aneurysm [86]. The presence of both active extravasation of contrast and a large haematoma (> 25 mm depth) predict the need for AE with good accuracy [86, 87].

Angioembolisation has been utilised in the non-operative management of all grades of renal injury; however, it is likely to be most beneficial in the setting of high-grade renal trauma (AAST > 3) [88-90]. Non-operative management of high-grade renal trauma, where AE is included in the management algorithm, can be successful in up to 94.9% of Grade 3, 89% of Grade 4 and 76% of Grade 5 injuries [85, 88, 91-93]. Increasing grade of renal injury is associated with increased risk of failed AE and need for repeat intervention [94]. Gross haematuria, haemodynamic instability, Grade 5 trauma and urinary extravasation are significant predictors of AE failure [95].

Repeat embolisation prevents nephrectomy in 67% of patients. Open surgery after failed embolisation usually results in nephrectomy [94, 96]. Despite concerns regarding parenchymal infarction and the use of iodinated contrast media, AE does not appear to affect the occurrence or outcome of acute kidney injury following renal trauma [97]. For high-grade injuries, AE has also been shown to have a high success rate and to provide the greatest protection of renal function, with no difference in renal function after long-term follow-up [98]. In severe polytrauma or high operative risk, the main artery may be embolised, either as a definitive treatment or as a step to a more controlled nephrectomy.

The evidence supporting AE in penetrating renal trauma is sparse. One study found that AE is three times more likely to fail in penetrating trauma [75]. However, AE has been used successfully to treat acute haemorrhage, AVF and pseudo-aneurysms resulting from penetrating renal trauma [99].

#### 4.1.4.1.4 Ureteral stenting and urinary catheterisation

In the management of high-grade renal trauma with collecting system injuries, ureteral stenting in asymptomatic patients has proven no clear benefits. Current evidence suggests intervention (ureteral stenting, nephrostomy or perirenal drainage) only when patients develop symptoms (flank pain, fever, leucocytosis) related with persistent urinary leaks [65, 100].

Catheterisation is not necessary in stable patients with low-grade injury. Patients with severe visible haematuria, who require monitoring or stenting, benefit from catheterisation. A longer period of catheterisation is required if a stent is placed. Once the haematuria lightens and the patient is mobile, the catheter should be removed.

#### 4.1.4.1.5 Repeat imaging (early)

Computed tomography scans should be performed on patients with fever, unexplained decreased haematocrit, or significant flank pain. Repeat imaging is also recommended in high-grade injury and in penetrating trauma two to four days after trauma to minimise the risk of missed complications. Repeat imaging can be safely omitted for patients with Grade 1-3 injuries as long as they remain clinically well [101, 102].

#### 4.1.4.2 *Surgical management*

##### 4.1.4.2.1 Indications for renal exploration

A non- or transient- response to initial fluid resuscitation is a strong indication for exploration [75, 76]. There is a trend towards ongoing resuscitation and AE [103]. Exploration is influenced by aetiology and grade of injury, transfusion requirements, the need to explore associated abdominal injuries, and the discovery of an expanding or pulsatile peri-renal haematoma at laparotomy [104]. Haemodynamic instable grade 5 vascular injuries are an indication for exploration [91, 105].

##### 4.1.4.2.2 Operative findings and reconstruction

The overall exploration rate for blunt trauma is low [106]. The goals of exploration following renal trauma are vascular control and renal salvage. Most series recommend the transperitoneal approach for surgery [107, 108]. Entering the retroperitoneum and leaving the confined haematoma undisturbed within the perinephric fascia is recommended; temporarily packing the fossa tightly with laparotomy pads can salvage the kidney in instances of intra-operative haemorrhage [109]. Access to the pedicle is obtained either through the posterior parietal peritoneum, which is incised over the aorta, just medial to the inferior mesenteric vein or by bluntly dissecting along the plane of the psoas muscle fascia, adjacent to the great vessels, and directly placing a vascular clamp on the hilum [109].

Stable haematomas detected during exploration for associated injuries should not be opened. Central or expanding haematomas indicate injuries of the renal pedicle, aorta, or vena cava and are potentially life-threatening and warrant further exploration [110].

Feasibility of renal reconstruction should be judged during the operation. The overall rate of patients who undergo a nephrectomy during exploration is approximately 30% [111]. Other intra-abdominal injuries also increase the likelihood of nephrectomy [112]. Mortality is associated with overall severity of the injury and not often a consequence of the renal injury itself [113]. High velocity gunshot injuries make reconstruction difficult and nephrectomy is usually required [114].

Renorrhaphy is the most common reconstructive technique. Partial nephrectomy is required when non-viable tissue is detected. Watertight closure of the collecting system is desirable, although closing the parenchyma over the injured collecting system is acceptable.

The use of haemostatic agents and sealants in reconstruction is helpful [115]. In all cases, drainage of the ipsilateral retroperitoneum is recommended.

The repair of vascular injuries is seldom, if ever, effective [116]. Repair should be attempted in patients with a solitary kidney or bilateral injuries [117]. Nephrectomy for main artery injury has outcomes similar to those of vascular repair and does not worsen post-treatment renal function in the short-term. Bleeding or dissection of the main renal artery may also be managed with a stent.

#### 4.1.5 **Follow-up**

The risk of complications relates to aetiology, injury grade, and mode of management [118, 119]. Follow-up includes physical examination, urinalysis, diagnostic imaging, blood pressure measurement and serum creatinine [66]. Potential complications are primarily identified by imaging; however, follow-up imaging is not recommended in low-grade uncomplicated injury. Ultrasound can be used to define the post-injury anatomy avoiding further ionising radiation. Nuclear scans are useful for documenting functional recovery following renal injury and reconstruction [120]. Annual blood pressure monitoring is recommended to exclude renovascular hypertension [121].

#### 4.1.5.1 Complications

Early ( $\leq 1$  month) complications include bleeding, infection, perinephric abscess, sepsis, urinary fistula, hypertension, urinary extravasation, and urinoma. Delayed complications include bleeding, calculus formation, chronic pyelonephritis, hypertension, AVF, hydronephrosis and pseudo-aneurysms. Bleeding may be life-threatening with elective angiographic embolisation the preferred treatment [122]. Perinephric abscess formation is initially managed by percutaneous drainage [106].

Hypertension is rare [123, 124]. It may occur acutely because of external compression from perirenal haematoma (Page kidney), chronically due to compressive scar formation, or as a result of renal artery thrombosis, segmental arterial thrombosis, renal artery stenosis (Goldblatt kidney), or AVF. Arteriography may be required. Treatment, including medical management, excision of the ischaemic parenchymal segment, vascular reconstruction, or nephrectomy, is indicated if hypertension persists [121].

Arteriovenous fistulae usually present with delayed onset of significant haematuria, most often after penetrating trauma. Percutaneous embolisation is often effective for symptomatic AVF, but larger fistulae may require surgery [125]. The development of pseudo-aneurysm is a rare complication following blunt trauma.

#### 4.1.6 Iatrogenic renal injuries

Iatrogenic renal trauma needs to be recognised and managed promptly to minimise morbidity and mortality. The most common causes of iatrogenic renal injuries are percutaneous access to kidney, stone surgery, cancer surgery (laparoscopic and open) and transplantation [3]. The diagnosis and management follow the same principles as outlined previously.

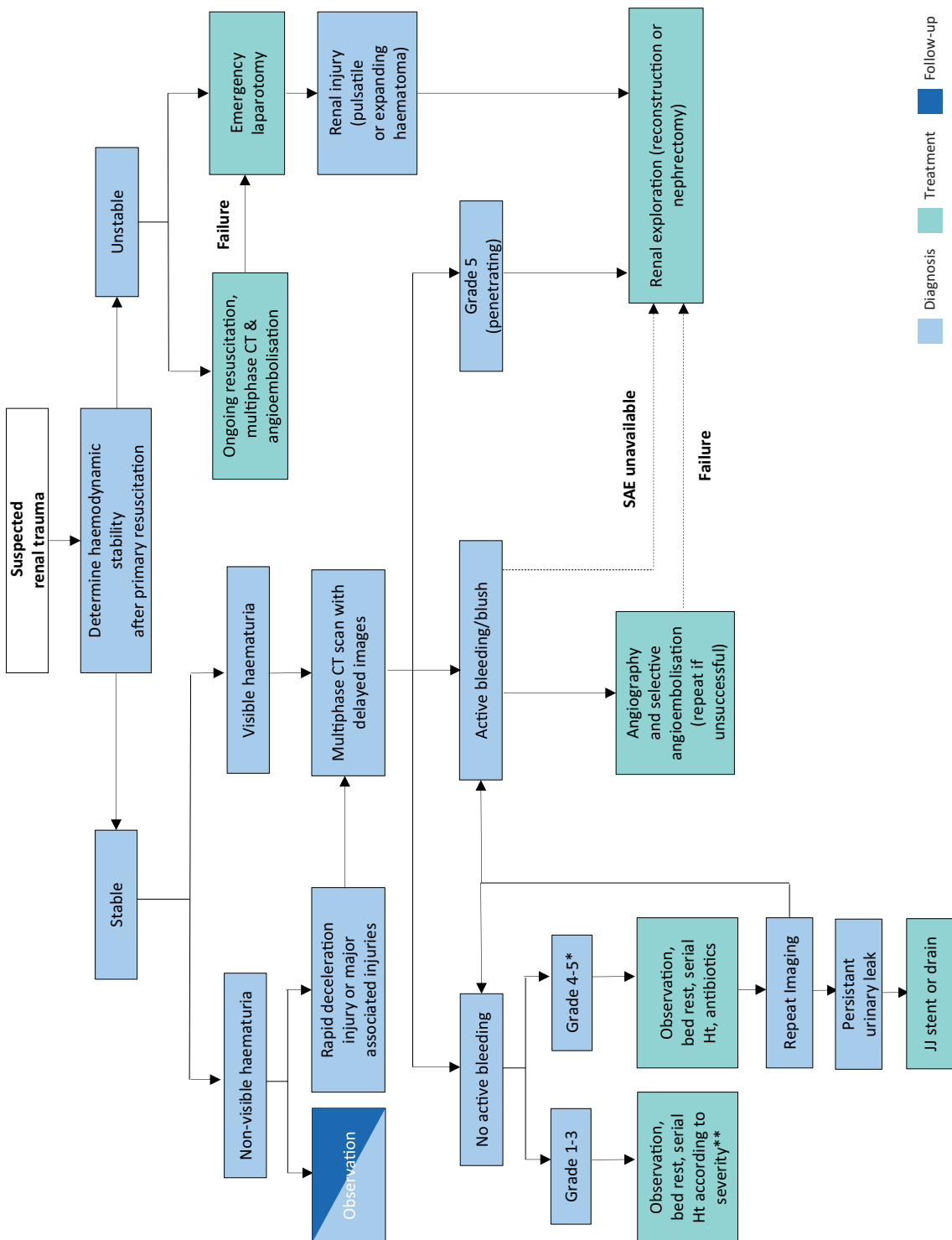
#### 4.1.7 Summary of evidence and recommendations for evaluation and management of renal trauma

Summary of evidence	LE
Vital signs on admission give the most reliable indication of the urgency of the situation.	3
Special consideration should be given to patients with a solitary kidney and pre-existing renal disease.	4
Haematuria is a key finding following renal trauma; although, it may not be present in certain situations.	3
A multiphase CT scan is the best method for the diagnosis and staging of renal injuries in haemodynamically stable patients.	3
Haemodynamic stability is the primary criterion for selecting patients for non-operative management.	3
Ureteric stenting in stable asymptomatic Grade 4 renal injuries is not necessary.	3
Selective angioembolisation is effective in patients with active bleeding from renal injury, without other indications for immediate abdominal operation.	3
Renal reconstruction should be attempted if haemorrhage is controlled and there is sufficient viable renal parenchyma.	3
Iatrogenic renal injuries are procedure-dependent (1.8-15%); the most common injuries are vascular.	3
Limited literature exists with regard to long-term consequences of renal trauma. Current follow-up includes physical examination, urinalysis, diagnostic imaging, serum creatinine, as well as annual blood pressure monitoring to diagnose renovascular hypertension.	4

<b>Recommendations</b>	<b>Strength rating</b>
<b>Evaluation</b>	
Assess haemodynamic stability upon admission.	Strong
Record past renal surgery, and known pre-existing renal abnormalities (ureteropelvic junction obstruction, solitary kidney, urolithiasis).	Strong
Test for haematuria in a patient with suspected renal injury.	Strong
Perform a multiphase computed tomography (CT) scan in trauma patients with: <ul style="list-style-type: none"> <li>• visible haematuria;</li> <li>• non-visible haematuria and one episode of hypotension;</li> <li>• a history of rapid deceleration injury and/or significant associated injuries;</li> <li>• penetrating trauma;</li> <li>• clinical signs suggesting renal trauma e.g. flank pain, abrasions, fractured ribs, abdominal distension and/or a mass and tenderness.</li> </ul>	Strong
<b>Management</b>	
Manage stable patients with blunt renal trauma non-operatively with close monitoring and re-imaging as required.	Strong
Manage isolated Grade 1-4 stab and low-velocity gunshot wounds in stable patients non-operatively.	Strong
Use selective angioembolisation for active renal bleeding if there are no other indications for immediate surgical exploration.	Strong
Insert urinary system drainage (ureteral stenting, nephrostomy) or perirenal drainage in cases of persistent or symptomatic urinary leak.	Strong
Proceed with renal exploration in the presence of: <ul style="list-style-type: none"> <li>• persistent haemodynamic instability;</li> <li>• Grade 5 vascular or penetrating injury;</li> <li>• expanding or pulsatile peri-renal haematoma.</li> </ul>	Strong
Attempt renal reconstruction if haemorrhage is controlled and there is sufficient viable renal parenchyma.	Weak
Repeat imaging in high-grade and penetrating injuries and in cases of fever, worsening flank pain, or falling haematocrit.	Strong
Follow-up approximately three months after major renal injury with urinalysis, individualised radiological investigation eg.: nuclear scintigraphy, CT or ultrasound, blood pressure measurement and renal function tests. Longer term annual follow-up for blood pressure is recommended.	Weak

4.1.8 Treatment algorithms  
Management of renal trauma

Figure 4.1.1 Management of renal trauma



\* Excluding Grade 5 penetrating injuries.

\*\* Antibiotics should be administered for all penetrating injuries.

— If haemodynamically unstable.

CT = computed tomography; Ht = haematocrit; SAE = selective angioembolisation.

## 4.2 Ureteral Trauma

### 4.2.1 Incidence

Trauma to the ureters is relatively rare as they are protected by their small size, mobility, posterior location, and the adjacent musculoskeletal and visceral structures. Iatrogenic injury during open, laparoscopic and endoscopic surgery is responsible for the majority of cases [126]. The injury is often missed intra-operatively and may result in significant morbidity [127].

### 4.2.2 Epidemiology, aetiology, and pathophysiology

Overall, ureteral trauma accounts for 1-2.5% of urinary tract trauma [126, 128-130], Penetrating external ureteral trauma, mostly by gunshot wounds, is the commonest form in most modern series, [126, 128, 131]. Higher rates of ureteral injury are seen in modern combat injuries [127]. About one-third of cases of external trauma to the ureters are caused by blunt trauma, mostly road traffic accidents [129, 130].

Ureteral injury should be suspected in all cases of penetrating abdominal injury, although it occurs in just 2-3% of cases [126]. It should also be suspected in blunt trauma with significant deceleration as pelvi-ureteral disruption can result. [126]. The distribution of external ureteral injuries along the ureter varies between series, but it is commonest in the upper ureter [128-130].

The incidence of urological iatrogenic trauma has decreased in the last twenty years due to improvements in technique, instrument technology, training methods and subspecialisation [131, 132].

Iatrogenic ureteral trauma can result from:

- ligation with a suture,
- rushing by a surgical instrument,
- partial or complete transection by unintended scalpel incision,
- thermal injury,
- or ischaemia from devascularisation [131, 133, 134].

Injury usually involves the lower ureter [126, 131, 133, 135]. Gynaecological operations are the most common cause of significant iatrogenic trauma (Table 4.2.1). It also occurs in colorectal operations, (resection of the distal colon) and vascular surgery (aortic aneurysm repair) [136, 137]. There has been a significant decrease in the rate of ureteral injury during robot-assisted procedures [138] and colorectal surgery [42]. However, minimally invasive techniques have not further reduced the rate of ureteral injuries in gynaecological surgery [139-141].

Ureteroscopy is a common cause of iatrogenic ureteric trauma contributing up to 71.6% in some series [142]. The post-ureteroscopic lesion scale (PULS) aims to standardise intra-operative traumatic findings during ureteroscopy [143]. Predictors for high grade ureteric injury include male gender, longer operative times, and ureteral access sheath (UAS) insertion times [142].

A smaller proximal ureter diameter seen in CT scanning and a predictor for high-grade ureteral injury during ureteral access sheath (UAS) placement [144]. A small RCT using pre-operative silodosin 8 mg for three days significantly reduced Grade 2 or higher ureteral injuries due to UAS insertion [145].

Risk factors for iatrogenic trauma include conditions that alter the normal anatomy, e.g., advanced malignancy, prior surgery or irradiation, diverticulitis, endometriosis, anatomical abnormalities, and major haemorrhage [131, 136, 146, 147]. Occult ureteral injury occurs more often than reported and not all injuries are diagnosed intra-operatively [127].

**Table 4.2.1: Incidence of ureteral injury in various procedures**

Procedure	Percentage %
<b>Gynaecological</b> [135, 148-150]	
Emergency caesarean delivery	0.01-0.06
Vaginal hysterectomy	0.02-0.5
Abdominal hysterectomy	0.03-2.0
Laparoscopic hysterectomy	0.13-6.0
Urogynaecological (anti-incontinence/prolapse)	1.7-4.3
<b>Colorectal</b> [134, 138, 148, 151, 152]	0.15-10
<b>Ureteroscopy</b> [132]	

Mucosal abrasion	0.3-4.1
Ureteral perforation	0.2-2.0
Intussusception/avulsion	0-0.3
Post-chemotherapy lymph node dissection for non-seminoma germ cell tumours	0.02
<b>Radical prostatectomy [154]</b>	
Open retropubic	0.05-1.6
Robot-assisted	0.05-0.4

#### 4.2.3 **Diagnosis**

The diagnosis of ureteral trauma is challenging; therefore, a high index of suspicion should be maintained. In penetrating external trauma, it is best identified intra-operatively during laparotomy [155]. The diagnosis is delayed in most cases of blunt trauma and iatrogenic trauma [131, 135, 156].

##### 4.2.3.1 *Clinical diagnosis*

External ureteral trauma usually accompanies severe abdominal and pelvic injuries. Penetrating trauma is usually associated with vascular and intestinal injuries, while blunt trauma is associated with damage to the pelvic bones and lumbosacral spinal injuries [129, 130]. Haematuria is an unreliable and poor indicator of ureteral injury, as it is present in only 50-75% of patients [126, 131, 157].

Iatrogenic injury may be noticed during the primary procedure, when intravenous dye (e.g. indigo carmine) is injected to exclude ureteral injury. Early recognition facilitates immediate repair and provides a better outcome [146, 155]. However, it is usually presenting later in the same admission, with the untoward sequelae of ureteral injury - upper tract obstruction, sepsis, abdominal distension, and when it is discovered by subsequent evidence of upper tract obstruction, urinary fistulae formation or sepsis. The following clinical signs are characteristic of delayed diagnosis - flank pain, urinary incontinence, vaginal or drain urinary leakage, haematuria, fever, and uraemia or urinoma. The complication rate increases with delayed diagnosis [126, 156, 158].

##### 4.2.3.2 *Radiological diagnosis*

Multi-phase CT is the mainstay imaging technique for trauma patients. Generally, it is widely available and allows for multi-phasic assessment of all of the structures in the pelvis and abdomen. Computed tomography urography (CTU) is the examination of choice when ureteral injuries are suspected [159, 160]. Extravasation of contrast medium in the delayed phase is the hallmark sign of injury. However, hydronephrosis, ascites, urinoma or mild ureteral dilation are often the only signs. In unclear cases, a retrograde or antegrade urography is the best method for confirmation [131]. Intravenous pyelography, especially one-shot IVP, is unreliable in diagnosis, as it is negative in up to 60% of patients [126, 131].

#### 4.2.4 **Prevention of iatrogenic trauma**

The prevention of iatrogenic trauma to the ureters depends upon the visual identification of the ureters and careful intra-operative dissection in their proximity [131, 133, 134]. The use of prophylactic pre-operative ureteral stent insertion assists in visualisation and palpation can be used in cases of higher complexity [37, 161]. It is probably makes it easier to detect ureteral injury intra-operatively [133]; however, it is not associated with a decrease in the likelihood of ureteric injury [152]. Apart from its evident disadvantages (potential complications, increased surgical time and cost), a stent may alter the location of the ureter and diminish its flexibility [133, 151]. A retrograde instillation of indocyanine green in the ureters has been shown to safely allow their identification and preservation in complex robotic-assisted colorectal surgeries [162, 163].

#### 4.2.5 **Management**

Management of ureteral trauma depends on many factors including the aetiology, severity, and location of the injury. Immediate diagnosis of a ligation injury during an operation can be managed by de-ligation and stent placement. Partial injuries can be repaired immediately with a stent or urinary diversion via a nephrostomy tube. Stenting is helpful because it provides canalisation and may decrease the risk of stricture [131, 164, 165]. Immediate repair of complete ureteral injury is advisable as it significantly decreases the need for secondary or tertiary procedures compared to delayed repair [164]. The ureter is mobilised on both ends and a spatulated end-to-end anastomosis is performed. Primary repair by uretero-ureterostomy or ureteric re-implantation can be safely performed laparoscopically at the time of the iatrogenic injury, with good medium-term results [166]. In cases of unstable trauma patients, a 'damage control' approach is preferred with ligation of the ureter, diversion of the urine (e.g. via a nephrostomy), and a later delayed definitive repair [167]. A national trauma



database study reported that the majority of blunt low- and high-severity traumatic ureteric injuries in both stable and unstable patients were treated by nephrostomy or stenting [168]. Exploratory laparotomy for associated traumatic injuries was a predictor for immediate ureteral reconstruction [168]. Injuries that are diagnosed late are usually managed first by placement of a nephrostomy tube or stent [131].

Endo-urological treatment of delayed-diagnosed ureteral injuries by internal stenting, with or without dilatation, is the first step in most cases. It is performed either retrogradely or antegradely via a percutaneous nephrostomy, and it has a variable success rate of 14-19% [169-171]. An open or robot-assisted laparoscopic surgical repair is necessary in case of failure [172]. The basic principles for any surgical repair of a ureteral injury are outlined in Table 4.2.2. Wide debridement is highly recommended for gunshot wound injuries due to the 'blast effect' of the injury.

#### 4.2.5.1 Proximal and mid-ureteral injury

Injuries shorter than 2-3 cm can usually be managed by a primary uretero-ureterostomy [126]. When this approach is not feasible, a ureterocalicostomy should be considered. In case of a large extra-renal pelvis and a stricture at the UPJ, a pelvic spiral flap (Culp de Weerd) is an option [173]. In extensive ureteral loss, a transureteroureterostomy is a valid option. The proximal stump of the ureter is transposed across the midline and anastomosed to the contralateral ureter. The reported stenosis rate is 4% and re-intervention or revision occurs in 10% of cases [174].

#### 4.2.5.2 Distal ureteral injury

Distal injuries are best managed by ureteral re-implantation (ureteroneocystostomy) because the primary trauma jeopardises the blood supply to the distal ureter. The question of refluxing vs. non-refluxing ureteral re-implantation remains unresolved in the literature. The risk for clinically significant reflux should be weighed against the risk for ureteral obstruction.

A psoas hitch between the bladder and the ipsilateral psoas tendon is usually needed to bridge the gap and to protect the anastomosis from tension. The contralateral superior vesical pedicle may be divided to improve bladder mobility. The reported success rate is very high (97%) [174]. In extensive mid-lower ureteral injury, the large gap can be bridged with a tabularised L-shaped bladder flap (Boari flap). It is a time-consuming operation and unsuited to the acute setting. The success rate is reported to be 81-88% [175].

#### 4.2.5.3 Long segment ureteral injury

A longer ureteral injury can be replaced using a segment of the intestines, usually the ileum (ileal interposition graft). This should be avoided in patients with impaired renal function or known intestinal disease. Follow-up includes serum chemistry to diagnose hyperchloremic metabolic acidosis [176]. The long-term complications include anastomotic stricture (3%) and fistulae (6%) [177]. Another option is downward nephropexy and a long Boari flap. In cases of extensive ureteral loss or after multiple attempts at ureteral repair, the kidney can be relocated to the pelvis (auto-transplantation). The renal vessels are anastomosed to the iliac vessels and a ureteral re-implantation is performed [178, 179].

Buccal mucosa ureteroplasty is an option for long segment ureteral injury, especially after a previous failed reconstruction, as an alternative to auto-transplantation. The overall success rate is 90%, but experience is limited [180].

#### 4.2.5.4 Permanent urinary diversion/nephrectomy

Following early or late repairs, up to 38% of patients develop secondary ureteric strictures requiring interventions [181] or palliative management by indwelling ureteric catheter or nephrostomy tube [164, 182]. Moreover, in some series up to 10% of failed repairs have evidence of renal parenchyma or function loss, leading to nephrectomy [164, 181].

**Table 4.2.2: Principles of surgical repair of ureteral injury**

Debridement of necrotic tissue
Spatulation of ureteral ends
Watertight tension-free mucosa-to-mucosa anastomosis using absorbable sutures
Internal stenting
External drain
Isolation of injury with peritoneum or omentum

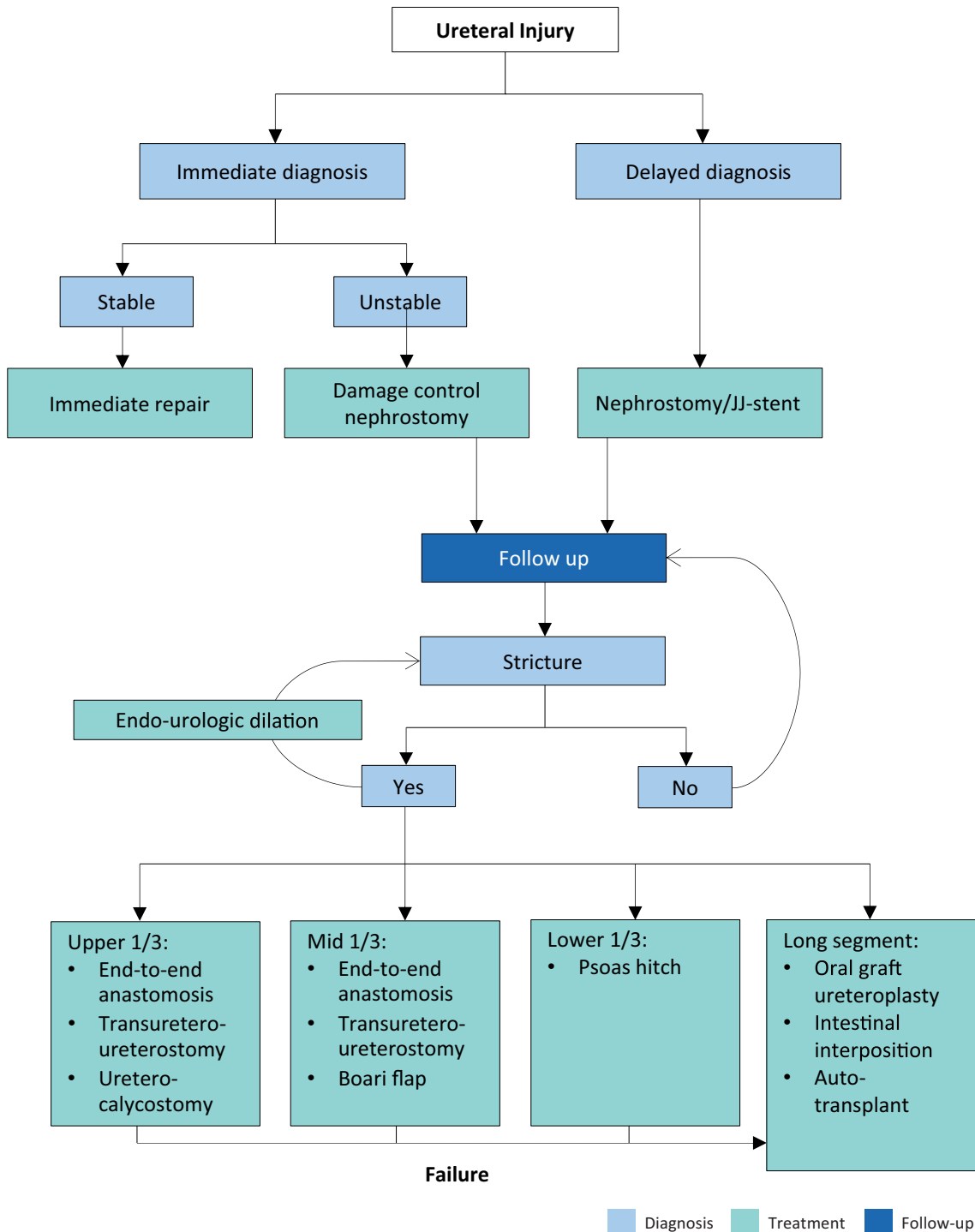
4.2.6 **Summary of evidence and recommendations for the management of ureteral trauma**

<b>Summary of evidence</b>	<b>LE</b>
Iatrogenic ureteral trauma is the most common cause of ureteral injury.	3
Gunshot wounds account for the majority of penetrating ureteral injuries, while road traffic accidents account for most blunt injuries.	3
Ureteral trauma usually accompanies severe abdominal and pelvic injuries.	3
Haematuria is an unreliable and poor indicator of ureteral injury.	3
Pre-operative prophylactic stents do not prevent ureteral injury; however, they may assist in its detection.	2
Endo-urological treatment of small ureteral fistulae and strictures is safe and effective.	3
Major ureteral injury requires ureteral reconstruction following temporary urinary diversion.	3

<b>Recommendations</b>	<b>Strength rating</b>
Visually identify the ureters to prevent ureteral trauma during complex abdominal and pelvic surgery.	Strong
Beware of concomitant ureteral injury in all abdominal penetrating trauma, and in deceleration-type blunt trauma.	Strong
Use pre-operative prophylactic stents in high-risk cases.	Strong
Repair iatrogenic ureteral injuries recognised during surgery immediately.	Strong
Treat iatrogenic ureteral injuries with delayed diagnosis by nephrostomy tube/JJ stent urinary diversion.	Strong
Manage ureteral strictures by ureteral reconstruction according to the location and length of the affected segment.	Strong

4.2.7 **Treatment algorithms**  
Management of ureteral injuries

Figure 4.2.1: Management of ureteral injuries



### 4.3 Bladder Trauma

#### 4.3.1 Classification

Bladder trauma is primarily classified according to the location of the injury: **intra**peritoneal, **extra**peritoneal, and **combined** intra-extraperitoneal [183], as it guides further management [184]. Bladder trauma is categorised by aetiology: **non-iatrogenic** (blunt and penetrating) and **iatrogenic** (external and internal).

#### 4.3.2 Epidemiology, aetiology, and pathophysiology

Road traffic accidents (Motor vehicle accidents) are the most common cause of blunt bladder injury, followed by falls and other accidents. The main mechanisms are pelvic crush and blows to the lower abdomen [129, 183, 185]. Most patients with blunt bladder injury have associated pelvic fractures (60-90%) and other

intra-abdominal injuries (44-68.5%) [186, 187]. Pelvic fractures are associated with bladder injury in about 3% of cases [129, 188]; however, this can be as high as 26.5% in cases of severe pelvic injury [189]. Bladder injury is associated with urethral injury in 5-20% of cases [184, 187, 190].

The incidence of extraperitoneal (22.4-61.1%), and intraperitoneal (38.9-65.8%) injuries varies among series [191]. **Extraperitoneal injury** is almost always associated with pelvic fractures [185, 187]. It is usually caused by distortion of the pelvic ring, with shearing of the anterolateral bladder wall near the bladder base (at its fascial attachments), or by a contrecoup at the opposite side. The highest risk of bladder injury was found in disruptions of the pelvic circle with displacement > 1 cm, diastasis of the pubic symphysis > 1 cm, and pubic rami fractures [129, 184]. Occasionally, the bladder is directly perforated by a sharp bony fragment [184].

**Intraperitoneal injury** is caused by a sudden rise in intravesical pressure of a distended bladder, secondary to a blow to the pelvis or lower abdomen. The bladder dome is the weakest point of the bladder and ruptures usually occur there [184]. Penetrating injuries, mainly gunshot wounds, are rare except in conflict zones and violent urban areas [183, 192, 193]. Improvised explosive devices are the main cause of combat related bladder injuries in asymmetric warfare [194].

#### 4.3.2.1 Iatrogenic bladder trauma (IBT)

The bladder is the urological organ that is most commonly affected by iatrogenic injury [195]. Table 4.3.1 shows the incidence of IBT during various procedures. **External IBT** occurs most often during obstetric and gynaecological procedures, followed by urological and general surgical operations [195]. Main risk factors are previous surgery, inflammation and malignancy [195]. Bladder perforations occur in up to 4.9% of mid-urethral sling operations for stress urinary incontinence in women. This rate is significantly lower in the obturator route compared to the retropubic route [196].

**Internal IBT** mainly occurs during transurethral resection of the bladder (TURB). Reported risk factors are larger tumours, older age, pre-treated bladders (previous TURB, intravesical instillations) and location at the bladder dome [197, 198]. Tumours at the lateral wall pose a risk factor because of the obturator jerk [199, 200]. Extraperitoneal perforations are more frequent than intraperitoneal perforations [198, 201], and perforations requiring intervention are rare (0.16-0.57%) [197].

**Table 4.3.1: Incidence of iatrogenic bladder trauma during various procedures**

Procedure	Percentage (%)
<b>Obstetrics &amp; Gynaecology</b>	
Laparoscopic/Robotic radical hysterectomy (malignant) [202]	4.19-4.59
Abdominal radical hysterectomy (malignant) [202]	2.37
Hysterectomy laparoscopic/abdominal/vaginal (benign) [141, 203]	0.1-2.5
Caesarean delivery [204]	0.08-0.94
<b>General surgery</b>	
Abdominal cytoreductive surgery [205]	4.5
Rectal procedures [206]	0.27-0.41
Small/large bowel procedures [206]	0.12-0.14
Laparoscopic inguinal hernia repair [207]	0.04-0.14
<b>Urology specific</b>	
Transurethral resection of the bladder [208, 209]	3.5-58
Retropubic male sling [210]	8.0-19
Mid-urethral sling (retropubic route) [196, 211]	4.91-5.5
Transvaginal mesh surgery [212]	2.84
Pubovaginal sling [211]	2.8
Laparoscopic sacrocolpopexy [213]	1.9
Mid-urethral sling (transobturator route) [211]	1.61
Burch colposuspension [211, 214]	1.0-1.2
Native tissue colporrhaphy [212]	0.53

#### 4.3.3 **Diagnostic evaluation**

The principal sign of bladder injury is visible haematuria [184, 185]. Absolute indications for bladder imaging include: visible haematuria and a pelvic fracture [184] or non-visible haematuria combined with high-risk pelvic fracture (disruption of the pelvic circle with displacement > 1 cm or diastasis of the pubic symphysis > 1 cm) or posterior urethral injury [184]. Bladder trauma should also be suspected in patients with blunt urethral trauma and high Injury Severity Score (ISS) [215]. In the absence of these absolute indications, further imaging is based on clinical signs and symptoms including [184, 185, 192, 216]:

- inability to void or inadequate urine output;
- abdominal tenderness or distension due to urinary ascites, or signs of urinary ascites in abdominal imaging;
- uraemia and elevated creatinine level due to intraperitoneal re-absorption;
- entry/exit wounds at lower abdomen, perineum, or buttocks in penetrating injuries.

Intra-operative signs of external iatrogenic bladder injury include: extravasation of urine, visible laceration, visible bladder catheter, and blood and/or gas in the urine bag during laparoscopy [204]. Direct inspection is the most reliable method of assessing bladder integrity [195]. Retrograde bladder filling (with or without instillation of dye e.g., methylene blue) helps to detect smaller lesions [217, 218]. If bladder perforation is close to the trigone, the ureteric orifices should be inspected [195, 204].

Internal bladder injury is recognised by cystoscopic identification of fatty tissue, dark space, or bowel [208]. It may also be detected by the inability to distend the bladder, low return of irrigation fluid, or abdominal distension [219].

Post-operatively, missed bladder trauma is diagnosed by haematuria, abdominal pain, abdominal distension, ileus, peritonitis, sepsis, urine leakage from the wound, decreased urinary output, or increased serum creatinine [195, 204]. An IBT during hysterectomy or caesarean delivery can result in vesicovaginal or vesicouterine fistulae [204, 220].

##### 4.3.3.1 *Cystography*

Cystography is the preferred diagnostic modality for non-iatrogenic bladder injury and for a suspected IBT in the post-operative setting [220, 221]. Both plain and CT cystography have a comparable sensitivity (90-95%) and specificity (100%) [185, 222]. However, CT cystography is superior in the identification of bony fragments in the bladder and bladder neck injuries, as well as concomitant abdominal injuries [184, 187].

Cystography must be performed using retrograde filling of the bladder with a minimum volume of 300-350 mL of dilute contrast material [221, 223]. Passive bladder filling by clamping the urinary catheter during the excretory phase of CT or IVP is not sufficient to exclude bladder injury [185]. Intraperitoneal extravasation is visualised by free contrast medium in the abdomen outlining bowel loops or abdominal viscera [224]. Extraperitoneal bladder injury is typically diagnosed by flame-shaped areas of contrast extravasation in the perivesical soft tissues. Contrast medium in the vagina is a sign of vesicovaginal fistula [220].

##### 4.3.3.2 *Cystoscopy*

Cystoscopy is the preferred method for detection of intra-operative bladder injuries as it may directly visualise the laceration and can localise the lesion in relation to the position of the trigone and ureteral orifices [224]. A lack of bladder distension during cystoscopy suggests a large perforation. Cystoscopy is recommended to detect perforation of the bladder (or urethra) following retropubic sub-urethral sling operations [196, 214]. Routine intra-operative cystoscopy during other gynaecologic procedures is not recommended [225], although the threshold to perform it should be low in any suspected bladder injury.

#### 4.3.4 **Prevention**

The risk of bladder injury is reduced by emptying the bladder by urethral catheterisation in every procedure where the bladder is at risk [217, 226]. Furthermore, the catheter's balloon can aid in identification of the bladder [217]. During TURB for tumours at the lateral wall, the incidence of internal IBT can be reduced by obturator nerve block or adequate muscle relaxation [200]. There is conflicting evidence whether bipolar TURB can reduce the risk for an obturator jerk [199, 200]. The use of combat pelvic protection systems reduces the risk of bladder and other genitourinary injuries due to the blast mechanism of improvised explosive devices [194, 227].

#### 4.3.5 **Disease management**

##### 4.3.5.1 *Conservative management*

Conservative treatment, which comprises of clinical observation, continuous bladder drainage and antibiotic prophylaxis [198], is the standard treatment for an uncomplicated extraperitoneal injury due to blunt [184, 187, 190] or iatrogenic trauma [198].

Conservative treatment can also be chosen for uncomplicated intraperitoneal injury after TURB or other operations, but only in the absence of peritonitis and ileus [209, 224]. Placement of an intraperitoneal drain is advocated, especially when the lesion is larger [219, 228]. Penetrating extraperitoneal bladder injuries (only if minor and isolated) can also be managed conservatively [191, 216, 229].

##### 4.3.5.2 *Surgical management*

Bladder closure is performed with absorbable sutures [191, 195]. There is no evidence that two-layer is superior to watertight single-layer closure [187, 191].

##### 4.3.5.2.1 Blunt non-iatrogenic trauma

Most extraperitoneal ruptures can be treated conservatively; however, bladder neck involvement, bone fragments in the bladder wall, concomitant rectal or vaginal injury or entrapment of the bladder wall necessitate surgical intervention [184, 230]. There is an increasing trend to treat pelvic ring fractures with open stabilisation and internal fixation with osteosynthesis material. During this procedure, an extraperitoneal rupture should be sutured concomitantly in order to reduce the risk of infection [231]. Likewise, an extraperitoneal rupture should be sutured during surgical exploration for other injuries, in order to decrease the risk of complications and to reduce recovery time [190]. In case of extraperitoneal injury with pelvic fractures treated by internal fixation, there is conflicting evidence about the need to repair the bladder in order to reduce the risk of infection [231, 232].

Intraperitoneal ruptures should always be managed by surgical repair [184, 187] because intraperitoneal urine extravasation can lead to peritonitis, intra-abdominal sepsis and death [186]. Abdominal organs should be inspected for possible associated injuries and urinomas must be drained if detected. Laparoscopic suturing of the intraperitoneal rupture is also possible [185].

##### 4.3.5.2.2 Penetrating non-iatrogenic trauma

Penetrating bladder injury is managed by emergency exploration, debridement of devitalised bladder wall and primary bladder repair [192, 193]. A midline exploratory cystotomy is advised to inspect the bladder wall and the distal ureters [191, 192]. In gunshot wounds, there is a strong association with intestinal and rectal injuries, usually requiring faecal diversion [192, 216]. Most gunshot wounds are associated with two transmural injuries (entry and exit wounds) and the bladder should be carefully checked for these two lesions [192]. As the penetrating agent (bullet, knife) is not sterile, antibiotic treatment is advised [193]. In selected patients (haemodynamically stable without associated injuries), penetrating well-contained extraperitoneal bladder injuries probably can be safely managed non-operatively [233].

##### 4.3.5.2.3 Iatrogenic bladder trauma

Perforations lacerations intra-operatively are primarily closed [234]. Bladder injuries not recognised during surgery or internal IBT should be managed according to their location. The standard of care for intraperitoneal injuries is surgical exploration and repair [224]. If surgical exploration is performed after TURB, the bowel must be inspected to rule out concomitant injury [197]. For extraperitoneal injuries, exploration is only needed for perforations complicated by symptomatic extravescical collections. It requires drainage of the collection, with or without closure of the perforation [235]. If bladder perforation is encountered during mid-urethral sling or transvaginal mesh procedures, sling re-insertion and urethral catheterisation (two to seven days) should be performed [236].

#### 4.3.6 **Follow-up**

Continuous bladder drainage is required to prevent elevated intravesical pressure and to allow the bladder to heal [195, 237]. Conservatively treated bladder injuries (traumatic or external IBT) are followed up by cystography to rule out extravasation and ensure proper bladder healing [184]. The first cystography is planned approximately ten days after injury [191]. In case of ongoing leakage, cystoscopy should be performed to rule out bony fragments in the bladder, and a second cystography is warranted one week later [184].

After operative repair of a simple injury in a healthy patient, the catheter can be removed after five to ten days without cystography [237, 238]. In cases of complex injury (trigone involvement, ureteric re-implantation) or risk factors of impaired wound healing (e.g., steroids, malnutrition) cystography is advised [191, 237]. For conservatively treated internal IBT, catheter drainage, lasting five to seven days, is proposed [198, 201].

#### 4.3.7 Summary of evidence and recommendations for bladder injury

Summary of evidence	LE
The combination of pelvic fracture and visible haematuria is highly suggestive of bladder injury.	3
Cystography is the preferred diagnostic modality for non-iatrogenic bladder injury and for suspected IBT in the post-operative setting.	3
Cystography must be performed using retrograde filling of the bladder with a minimum volume of 300-350 mL of dilute contrast material. Passive bladder filling by clamping the urinary catheter during the excretory phase of CT or IVP is not sufficient to exclude bladder injury.	3
The risk of bladder perforation during mid-urethral sling operations for stress urinary incontinence is lower for the obturator route compared to the retropubic route.	1a
Conservative treatment, which comprises of clinical observation, continuous bladder drainage and antibiotic prophylaxis, is the standard treatment for an uncomplicated extraperitoneal injury due to blunt trauma.	3
In extraperitoneal bladder injury with either bladder neck involvement, bone fragments in the bladder wall, concomitant rectal or vaginal injury, or entrapment of the bladder wall, surgical intervention is necessary in order to decrease the risk of complications and to reduce recovery time.	3
Intraperitoneal bladder trauma is managed by surgical repair because intraperitoneal urine extravasation can lead to peritonitis, intra-abdominal sepsis, and death.	3
Conservative treatment is suitable for uncomplicated intraperitoneal injury during endo-urological procedures, in the absence of peritonitis and ileus.	3
In cases of complex injury (trigone involvement, ureteric re-implantation) or risk factors of impaired wound healing (e.g., steroids, malnutrition) cystography is advised after bladder repair.	2a

Recommendations	Strength rating
Perform cystography in the presence of visible haematuria and pelvic fracture.	Strong
Perform cystography in case of suspected iatrogenic bladder injury in the post-operative setting.	Strong
Perform cystography with active retrograde filling of the bladder with dilute contrast (300-350 mL).	Strong
Perform cystoscopy to rule out bladder injury during retropubic sub-urethral sling procedures.	Strong
Manage uncomplicated blunt extraperitoneal bladder injuries conservatively.	Weak
Manage blunt extraperitoneal bladder injuries operatively in cases of bladder neck involvement and/or associated injuries that require surgical intervention.	Strong
Manage blunt intraperitoneal injuries by surgical exploration and repair.	Strong
Manage small uncomplicated intraperitoneal bladder injuries during endoscopic procedures conservatively.	Weak
Perform cystography to assess bladder wall healing after repair of a complex injury or in case of risk factors for wound healing.	Strong

## 4.4 Urethral Trauma

### 4.4.1 Epidemiology, aetiology and pathophysiology

#### 4.4.1.1 Anterior male urethral injury

The bulbar urethra is the most common site affected by blunt trauma. In bulbar injuries, the bulb is compressed against the pubic symphysis, resulting in rupture of the urethra at the site of compression [239]. Possible mechanisms are straddle injuries or kicks to the perineum. A penile fracture can be complicated by a urethral injury in approximately 15% of cases [240, 241]. **Penetrating** anterior injuries are rare and are usually caused by gunshot wounds, stab wounds, dog bites, impalement, or penile amputations [239]. Depending on the affected segment, penetrating injuries are usually associated with penile, testicular and/or pelvic injuries [242]. Insertion of **foreign bodies** is another rare cause of anterior injury. It is usually a result of autoerotic stimulation or may be associated with psychiatric disorders [243].

**Iatrogenic** injury is the most common type of urethral trauma [244]. The incidence of male urethral injury during transurethral catheterisation is 13.4 per 1,000 catheters inserted [245]. Injuries can occur due to creation of a false passage by the tip of the catheter or inadvertent inflation of the anchoring balloon in the urethra [245]. The importance of catheter insertion training programmes [246, 247] and the implementation of difficult urinary catheterisation protocols [248], to prevent urethral injury during transurethral catheterisation, have been demonstrated. Preliminary data suggests that guidewire led catheter insertion, or use of a safety valve for balloon inflation may prevent urethral trauma in difficult catheterisation cases [249, 250]. A SR of the use of hydrophilic coated catheters, in patients performing intermittent catheterization, showed no clear benefit [251].

During penile prosthesis insertion, the risk of urethral perforation is 0.1-4%. Proximal urethral injuries are more common than distal ones [252].

#### 4.4.1.2 *Posterior male urethral injuries*

**Blunt** posterior urethral injuries are almost exclusively related to pelvic fractures and the risk increases with fracture configuration severity [253]. These injuries are referred to as pelvic fracture urethral injuries (PFUI) [239], and are mainly caused by road traffic accidents [254]. Pelvic fracture urethral injuries are divided into partial or complete ruptures [253, 254]. In complete ruptures, there is a gap between the disrupted ends of the urethra, which fills up with scar tissue. There is no urethral wall in the scarred space and any lumen represents a fistulous tract between the urethral stumps [255]. Injuries of the bladder neck and prostate are rare and mostly occur at the anterior midline of both the bladder neck and prostatic urethra [256]. It is highly uncommon to find a complete transection of the bladder neck or an avulsion of the anterior part of the prostate [256]. Concomitant injuries to the head, thorax, abdomen and/or spine are frequent (up to 66%) [254].

**Penetrating** injuries of the pelvis, perineum, or buttocks (mainly gunshot wounds) can also damage the posterior urethra but are extremely rare in the civilian setting [253]. There is a high probability of associated injuries (approx. 90%), mainly intra-abdominal [192].

The associated injuries which occur with both blunt and penetrating posterior urethral injuries can be life-threatening, and if so, will govern the patient's assessment and treatment [254]. Delayed morbidities of posterior urethral injuries include strictures, incontinence and erectile dysfunction, all of which may have a detrimental effect on the patient's quality of life [257]. The pooled estimate for the proportion of patients with erectile dysfunction following PIFU is 34% [258].

Iatrogenic injury has been reported with transanal total mesorectal excision in 1-11% of cases. This injury is usually partial and located at the membranous urethra [259].

#### 4.4.1.3 *Female urethral injuries*

**Birth related injuries** to the female urethra are rare and consist of minor (peri)urethral lacerations during vaginal delivery. Pelvic fractures are the main cause of **blunt** trauma [260]; however, PFUIs in females are rare and less common than in males [253]. This is usually attributed to the flexibility provided by the vagina and the greater inherent elasticity of the female urethra [260], it may also be the result of less severe and more frequent stable pelvic fractures in females [184, 254]. In unstable pelvic fractures in females, a high suspicion for a urethral injury should be maintained [260]. Female urethral injuries are classified into two types: longitudinal or partial (most frequent) injuries and transverse or complete injuries [260]. Concomitant bladder or vaginal injury is possible; therefore, females are at risk of developing urinary incontinence and urethrovaginal fistula [254, 260].

Insertion of a synthetic sub-urethral sling for the treatment of female stress urinary incontinence is complicated by an intra-operative urethral injury in 0.2-2.5% of cases [261] and is an important cause of **iatrogenic** urethral injury.

### 4.4.2 **Evaluation**

#### 4.4.2.1 *Clinical signs*

Blood at the meatus is the cardinal sign, but the absence of it doesn't rule out a urethral injury [184, 254]. Inability to void (with a palpable distended bladder) is another classic sign and is often associated with a complete rupture [254, 255]. Haematuria and pain on urination may be present in incomplete ruptures. Urinary extravasation and bleeding may result in scrotal, penile and/or perineal swelling and ecchymosis, depending on the location and extent of the trauma. The presentation of these clinical symptoms may be delayed (> 1 hour) [255].

Rectal examination should always be done to exclude an associated rectal injury (up to 5% of cases) and may reveal a 'high-riding' prostate, which is an unreliable finding [184, 255]. Failure to detect a rectal injury can cause significant morbidity and even mortality. A rectal injury is suggested by blood on the examining finger and/or a palpable laceration [184]. Another sign of urethral injury is difficulty or inability to pass a urethral catheter [184, 255].



A female urethral injury should be suspected from the combination of a (unstable) pelvic fracture with blood at the vaginal introitus, vaginal laceration, haematuria, urethrorrhagia, labial swelling, urinary retention, or difficulties passing a urethral catheter [184, 257]. Vaginal examination is indicated to assess vaginal lacerations [184, 257].

#### 4.4.2.2 Urethrography

Retrograde urethrography (RUG) is the standard in the early evaluation of a male urethral injury [184, 262] and is conducted by injecting 20-30 mL of contrast material while occluding the meatus. Films should be taken in a 30° oblique position. In patients with PFUI, it is important to move the X-ray beam to the 30° angle rather than the patient [254]. In an unstable patient, RUG should be postponed until the patient has been stabilised [184, 192].

During RUG, any extravasation outside the urethra is pathognomonic for urethral injury [255]. A typical image for incomplete rupture shows extravasation from the urethra which occurs while the bladder is still filling. A complete rupture is suggested by massive extravasation without bladder filling [254]. Although RUG is able to reliably identify the site of injury (anterior vs. posterior), the distinction between a complete and partial rupture is not always clear [254, 263]. Therefore, any proposed classification system based on RUG is not reliable [254, 263]. In females, the short urethra and vulvar oedema makes adequate urethrography nearly impossible [264].

Prior to deferred treatment, a combination of RUG and antegrade cysto-urethrography is the standard to evaluate site and extent of the urethral stenosis, and to evaluate the competence of the bladder neck [254].

#### 4.4.2.3 Cysto-urethroscopy

Flexible cysto-urethroscopy is a valuable alternative to diagnose an acute urethral injury and may distinguish between complete and partial rupture [262]. Flexible cysto-urethroscopy is preferred to RUG in suspected penile fracture-associated urethral injury as RUG is associated with a high false-negative rate [265, 266]. In females, where the short urethra often precludes adequate radiological visualisation, cysto-urethroscopy and vaginoscopy are the diagnostic modalities of choice [184, 260]. If, prior to deferred treatment, the competence of the bladder neck is not clear upon antegrade cysto-urethrography, a suprapubic cystoscopy is advised [254].

#### 4.4.2.4 Ultrasound and magnetic resonance imaging

In the acute phase, US scanning is used for guiding the placement of a suprapubic catheter [254]. In complex PFUIs, MRI before deferred treatment provides valuable additional information, which can help to determine the most appropriate surgical strategy [267]. This information includes a better estimation of the length of the distraction defect, degree of prostatic displacement and presence/absence of a false passage [267].

### 4.4.3 Disease Management

#### 4.4.3.1 Male anterior urethral injuries

##### 4.4.3.1.1 Immediate exploration and urethral reconstruction

This is indicated for penile fracture related injuries [268] and non-life-threatening penetrating injuries [257]. Small lacerations can be repaired by simple closure [241]. Complete ruptures without extensive tissue loss are treated with anastomotic repair [241, 242]. Only 2% of cases will develop a urethral stricture after immediate urethral reconstruction for penile fracture [268]. In the case of longer defects or apparent infection (particularly bite wounds), a staged repair with urethral marsupialisation is needed [262]. Penetrating injuries require peri- and post-operative antibiotic treatment [269].

Immediate urethroplasty has been performed in blunt injuries. The long term-outcomes (patency rate, potency rate) of patients treated with immediate urethroplasty is similar to these initially treated with suprapubic diversion and delayed urethroplasty [270]. The main advantage of performing immediate urethroplasty is that this strategy significantly reduces the time to spontaneous voiding from two to six months to three weeks on average [270, 271]. Spongiosal contusion and haematoma during immediate urethroplasty will make the operation technically more demanding; therefore, immediate urethroplasty should be performed by a dedicated urethral surgeon [271].

Perforation of the distal urethra during penile prosthesis insertion needs to be repaired over a catheter; in this instance the initial procedure should be abandoned [272].

##### 4.4.3.1.2 Urinary diversion

Blunt anterior urethral injuries are associated with spongiosal contusion. Evaluation of the limits of urethral debridement in the acute phase might be difficult and as a consequence, it is reasonable to start with urinary diversion only [262].

If urinary diversion is performed, the therapeutic options are suprapubic diversion or a trial of early endoscopic re-alignment with transurethral catheterisation [262]; there is conflicting evidence as to which intervention is superior [270, 271, 273]. A retrospective case series of 44 patients comparing early realignment versus suprapubic tube placement, shows no difference in stricture formation [274].

Urinary diversion is maintained for one to two weeks for partial ruptures and three weeks for complete ruptures [262, 273]. A review of 49 Chinese studies (1,015 patients), reported a 57% (range: 0 - 100%) success rate for endoscopic re-alignment of blunt anterior injuries [270]. The wide range in success rate most likely reflects a mix of partial and complete ruptures which was not further specified in the review. For complete ruptures, urinary diversion on its own is unlikely to result in a successful outcome (0 - 25% patency rate) [271, 273].

Transurethral or suprapubic urinary diversion are treatment options for iatrogenic or life-threatening penetrating injuries [257, 275]. Minor iatrogenic urethral injuries and urethral contusions do not require urinary diversion [3].

#### 4.4.3.2 *Male posterior urethral injuries*

##### 4.4.3.2.1 Emergency room management

As these injuries are usually associated with other severe injuries, resuscitation and immediate treatment of life-threatening injuries have absolute priority [254]. Penetrating injuries especially have a very high likelihood of associated injuries requiring immediate exploration [192, 276]. There is no urgency to treat the urethral injury and urinary diversion is not essential during the first hours after trauma [255]; however, it is preferable to establish early urinary diversion to:

- monitor urinary output, since this is a valuable sign of the haemodynamic condition and the renal function of the patient;
- treat symptomatic retention if the patient is still conscious;
- minimise urinary extravasation and its secondary effects, such as infection and fibrosis [254].

Insertion of a suprapubic catheter is an accepted practice in urgent situations [255, 276]. However, insertion of a suprapubic catheter is not without risk, especially in the unstable trauma patient where the bladder is often displaced by a pelvic haematoma or because of poor bladder filling due to haemodynamic shock or concomitant bladder injury. In these circumstances, an attempt at urethral catheterisation can be carried out by experienced personnel. It is extremely unlikely that the gentle passage of a urethral catheter will do any additional damage [254]. If there is any difficulty, a suprapubic catheter should be placed under US guidance or under direct vision, for example, during laparotomy for associated injuries [254]. Suprapubic catheter placement does not increase the risk of infectious complications in patients undergoing internal fixation to stabilise a pelvic fracture [277]. Therefore, the assertion that suprapubic catheter placement would increase the risk of orthopaedic hardware infection and subsequent explantation is not justified [277].

##### 4.4.3.2.2 Early urethral management (less than six weeks after injury)

For partial injuries, urinary diversion (suprapubic or transurethral) is sufficient as these injuries can heal without significant scarring or obstruction [255, 257]. A complete injury will not heal, and formation of an obliterated segment is inevitable in case of suprapubic diversion alone [255, 257]. To avoid this obliteration and a long period of suprapubic diversion followed by deferred urethroplasty, the urethral ends can be sutured (urethroplasty) or approximated over a transurethral catheter (re-alignment).

##### 4.4.3.2.2.1 Early re-alignment

Early re-alignment can be performed when a stable patient is on the operating table for other surgery or as a stand-alone procedure in the absence of concomitant injuries [192, 278]. In a partial injury, re-alignment, and transurethral catheterisation avoids extravasation of urine in the surrounding tissues reducing the inflammatory response. In complete injuries, the aim of re-alignment is to correct severe distraction injuries rather than to prevent a stricture [257, 279].

Re-alignment can be done by an open or endoscopic technique [279, 280]. The open technique is associated with longer operation times, more blood loss and longer hospital stays; as such, endoscopic re-alignment is now preferred [270]. Using a flexible/rigid cystoscope and biplanar fluoroscopy, a guidewire is placed inside the bladder under direct visual control, over this, a catheter is placed. If necessary, two cystoscopes can be used: one retrograde (per urethra) and one antegrade (suprapubic route through the bladder neck) [254]. The duration of catheterisation is three weeks for partial and six weeks for complete ruptures with voiding urethrography upon catheter removal [254]. It is important to avoid traction on the balloon catheter as it can damage the remaining sphincter mechanism at the bladder neck [254].

With contemporary endoscopic re-alignment procedures, stricture formation is reduced to 44-49% [279, 280] compared to a 89-94% stricture rate with suprapubic diversion [280, 281]. There is no evidence that early re-alignment increases the risk of urinary incontinence (4.7-5.8%) or erectile dysfunction (16.7-20.5%) [280, 281].

Another potential benefit of early re-alignment is that when a stricture occurs it will be shorter and therefore, easier to treat. For short, non-obliterative strictures following re-alignment, direct vision urethrotomy can be performed. Approximately 50% of strictures after endoscopic re-alignment can be treated endoscopically [279]. However, repetitive endoscopic procedures in case of stricture formation might delay the time to definitive cure and can increase the incidence of adverse events (false passage, abscess formation) [282, 283]. In light of this, repetitive endoscopic treatments after failed re-alignment are not recommended; instead, urethroplasty must be performed.

A retrospective review found a shorter stricture length after early (open) re-alignment and as a consequence, a tendency for less complex manoeuvres to be needed to allow for a tension-free anastomosis during urethroplasty [284]. On the other hand, another retrospective review, reported an equal stricture length and no greater facilitation of urethroplasty after failed endoscopic re-alignment compared to suprapubic diversion only [282]. The proposed benefit is thus highly questionable. Furthermore, there is conflicting evidence as to whether failed early re-alignment jeopardises the success of definitive urethroplasty [254].

Differences between series in the rates of incontinence, impotence and re-stricture can be explained by differences in patient selection (severe vs. less severe trauma), a mix of partial and complete ruptures, and differences in follow-up duration. Furthermore, these differences make the comparison with other techniques difficult, especially with urethroplasty [184, 279].

#### 4.4.3.2.2 Early urethroplasty

Immediate urethroplasty within 48 hours after injury is difficult because of poor visualisation and the inability to accurately assess the degree of urethral disruption, due to extensive swelling and ecchymosis, which may result in extensive unjustified urethral debridement. Another problem is the risk of severe bleeding (average 3 L) following entry into the pelvic haematoma [254]. In addition, with high rates of impotence (23%), incontinence (14%) and strictures (54%), urethroplasty within 48-hours is not indicated [254].

Early urethroplasty can be performed after two days and up to six weeks after the initial injury, if associated injuries have been stabilised, the distraction defect is short, the perineum is soft and the patient is able to lie down in the lithotomy position [285, 286]. This avoids a long period of suprapubic diversion with its discomfort and complications [285, 286]. As the results (complications, stricture recurrence, incontinence, and impotence) are equivalent to delayed urethroplasty [286-288], early urethroplasty might be an option for patients fulfilling the above-mentioned criteria.

Lacerations (blunt or penetrating) at the bladder neck and prostatic urethra are a specific entity: they will never heal spontaneously, will cause local cavitation (presenting a source of infection) and compromise the intrinsic sphincter mechanism (with increased risk of urinary incontinence) [256]. They must be reconstructed as soon as possible [257, 263, 276]. For penetrating injuries with severe lesions to the prostate, prostatectomy (bladder neck sparing) must be performed [276].

#### 4.4.3.2.3 Deferred management (greater than three months after injury)

The standard treatment remains deferred urethroplasty [13, 14]. In the case of a complete rupture, treated with an initial period of three months suprapubic diversion, obliteration of the posterior urethra is almost inevitable [255]. Endoscopic treatment of a complete obliteration is not successful [254]. After at least three months of suprapubic diversion, the pelvic haematoma is nearly always resolved, the prostate has descended into a more normal position, the scar tissue has stabilised [285] and the patient is clinically stable and able to lie down in the lithotomy position [262, 285]. Associated life-threatening injuries often preclude early management of penetrating membranous urethral injuries. In those cases, suprapubic diversion with delayed urethroplasty is also advised [17, 25, 27]. Perineal anastomotic repair is the surgical technique of choice, but a combined abdominoperineal approach is necessary in rare cases of concomitant bladder neck injury or recto-urethral fistula [289].

An extensive overview of deferred urethroplasty can be found in the Urethral Strictures Guidelines [290].

#### 4.4.3.2.4 Iatrogenic posterior injuries

Urethral defects during transanal total mesorectal excision were repaired by direct suture repair via a transperineal approach in a small case series (n=32). Despite direct repair, 26% developed complications including urethral stricture, urethral dehiscence, recto-urethral fistula, and recto-perineal fistula. No evidence on other strategies is available [259].

#### 4.4.3.3 Female urethral injuries

Emergency room management of PFUIs in females is the same as in males (section 4.4.3.2.1); however, subsequent management differs. Treatment options are [260]:

- **Early realignment:** This is associated with a high stricture and fistula rate.
- **Early repair (less than or equal to seven days):** Complication rate is the lowest with early repair; therefore, this strategy is preferred once the patient is haemodynamically stable [257, 260].
- **Delayed repair (greater than seven days):** Delayed repair often requires complex abdominal or combined abdominal-vaginal reconstruction with elevated risk of urinary incontinence and vaginal stenosis.

The approach (vaginal, abdominal or combined) for early repair depends on the location of the injury [260]. Proximal and mid-urethral disruptions require immediate exploration and primary repair using the retropubic and transvaginal routes, respectively, with primary suturing of the urethral ends or urethral laceration. Concomitant vaginal lacerations are repaired (two-layer closure) trans vaginally at the same time [260]. Distal urethral injuries can be left hypospadiac since they do not disrupt the sphincter mechanism, but a concomitant vaginal laceration must be closed [184, 264]. In case of urethral injury during synthetic sub-urethral sling insertion, immediate repair is warranted with abandonment of sling insertion [261].

**Table 4.4.1: Complication rates for different treatment strategies for PFUIs in females [260]**

Type of repair	Stricture (%)	Fistula (%)	Incontinence (%)	Vaginal stenosis (%)	Need for permanent urinary diversion (%)
Early realignment	59	13	0	0	0
Early repair	3	6	9	0	3
Delayed repair	3	4	31	4	7

#### 4.4.4 Summary of evidence and recommendations for the evaluation and management of urethral trauma

Summary of evidence	LE
Implementing training programmes on urinary catheter insertion for personnel involved with urethral catheterisation significantly improves the rate of catheter-related complications.	2b
In males, a urethral injury is detected as contrast extravasation during urethrography or as a mucosal laceration during cysto-urethroscopy.	3
As opposed to cysto-urethroscopy, voiding cysto-urethrography will miss a female urethral injury in approximately 50% of cases.	3
Transurethral or suprapubic urinary diversion are the treatment options for iatrogenic injuries.	3
With urinary diversion (suprapubic or transurethral catheter) satisfactory urethral luminal re-canalisation may occur after partial blunt anterior urethral ruptures.	3
Complete blunt anterior urethral ruptures are unlikely to be cured by urinary diversion alone, whereas immediate urethroplasty has an equal success rate compared to delayed urethroplasty. The main advantage of immediate urethroplasty is to reduce the time to spontaneous voiding.	3
If PFUIs are associated with life-threatening injuries, urethral management has no priority and urinary diversion with either urethral or suprapubic catheterisation is sufficient initially.	3
With early endoscopic re-alignment the stricture rate is reduced to 44-49% without increased risk of incontinence or erectile dysfunction.	3
Repetitive endoscopic treatments after failed re-alignment delay the time to definitive cure and increase the incidence of adverse events.	3
For partial posterior injuries, urinary diversion (suprapubic or transurethral) is sufficient as these injuries might heal without significant scarring or obstruction.	3

Immediate urethroplasty (< 48 hours) in male PFUI is associated with a higher risk of bleeding, stricture, incontinence, and impotence rates compared to delayed urethroplasty.	3
In selected patients for male PFUI, early urethroplasty (two days to six weeks) is associated with similar stricture, incontinence and impotence rates compared to delayed urethroplasty.	3
Suprapubic diversion with delayed urethroplasty in male PFUI with complete urethral disruption is associated with an 86% stricture free success rate and with no significant impact on erectile function and urinary continence.	2a
Early repair in female PFUI has the lowest complication rate.	3

<b>Recommendations</b>	<b>Strength rating</b>
Provide appropriate training to reduce the risk of traumatic catheterisation.	Strong
Evaluate male urethral injuries with flexible cysto-urethroscopy and/or retrograde urethrography.	Strong
Evaluate female urethral injuries with cysto-urethroscopy and vaginoscopy.	Strong
Treat iatrogenic anterior urethral injuries by transurethral or suprapubic urinary diversion.	Strong
Treat partial blunt anterior urethral injuries by suprapubic or urethral catheterisation.	Strong
Treat complete blunt anterior urethral injuries by immediate urethroplasty, if surgical expertise is available, otherwise perform suprapubic diversion with delayed urethroplasty.	Weak
Treat pelvic fracture urethral injuries (PFUIs) in haemodynamically unstable patients by transurethral or suprapubic catheterisation initially.	Strong
Perform early endoscopic re-alignment in male PFUIs when feasible.	Weak
Do not repeat endoscopic treatments after failed re-alignment for male PFUI.	Strong
Treat partial posterior urethral injuries initially by suprapubic or transurethral catheter.	Strong
Do not perform immediate urethroplasty (< 48 hours) in male PFUIs.	Strong
Perform early urethroplasty (two days to six weeks) for male PFUIs with complete disruption in selected patients (stable, short gap, soft perineum, lithotomy position possible).	Weak
Manage complete posterior urethral disruption in male PFUIs with suprapubic diversion and deferred (at least three months) urethroplasty.	Strong
Perform early repair (within seven days) for female PFUIs (not delayed repair or early re-alignment).	Strong

#### 4.4.5 Treatment algorithms

Management of anterior and posterior urethral injuries in men

Figure 4.4.1: Management of anterior urethral injuries in men

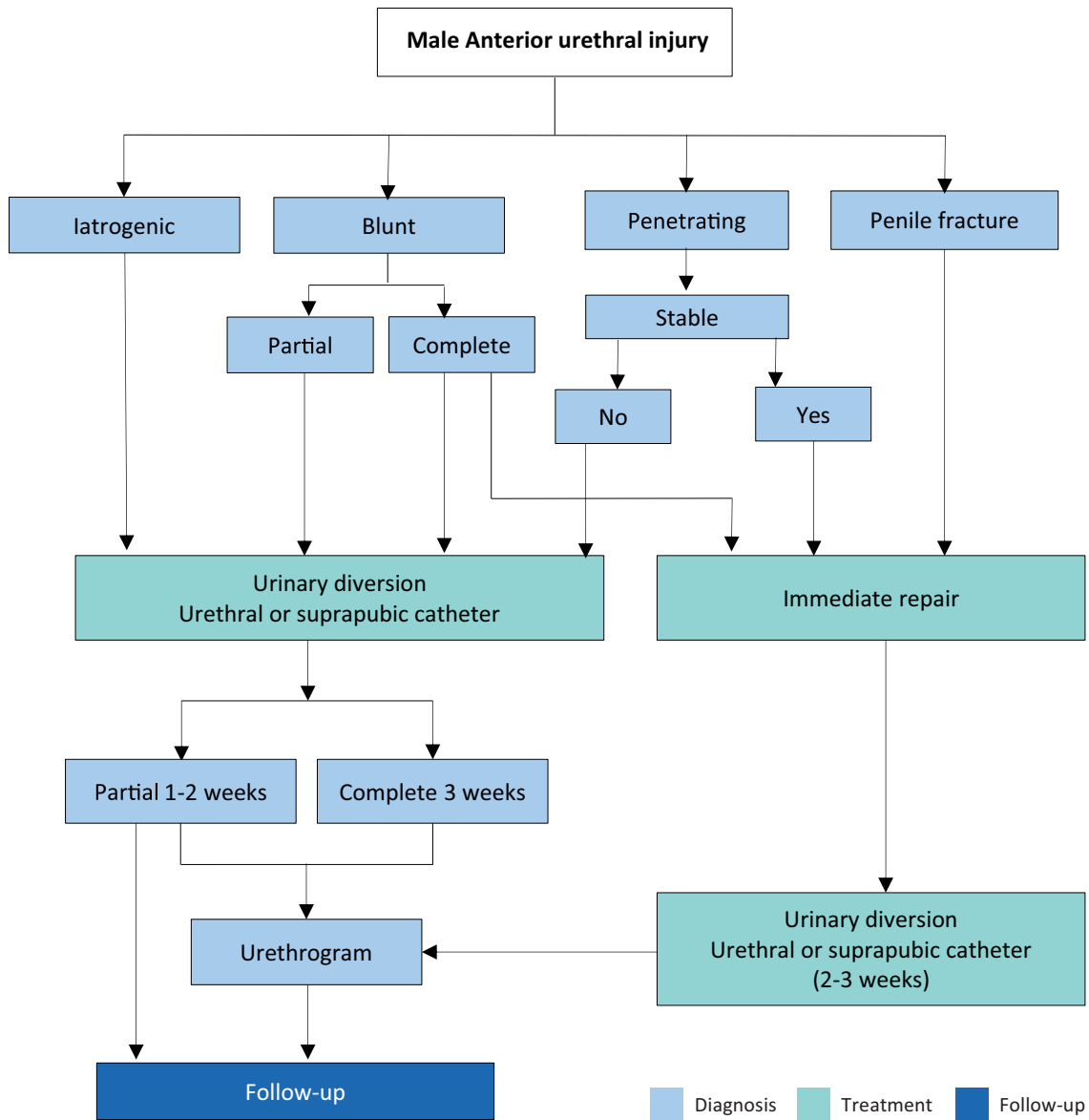
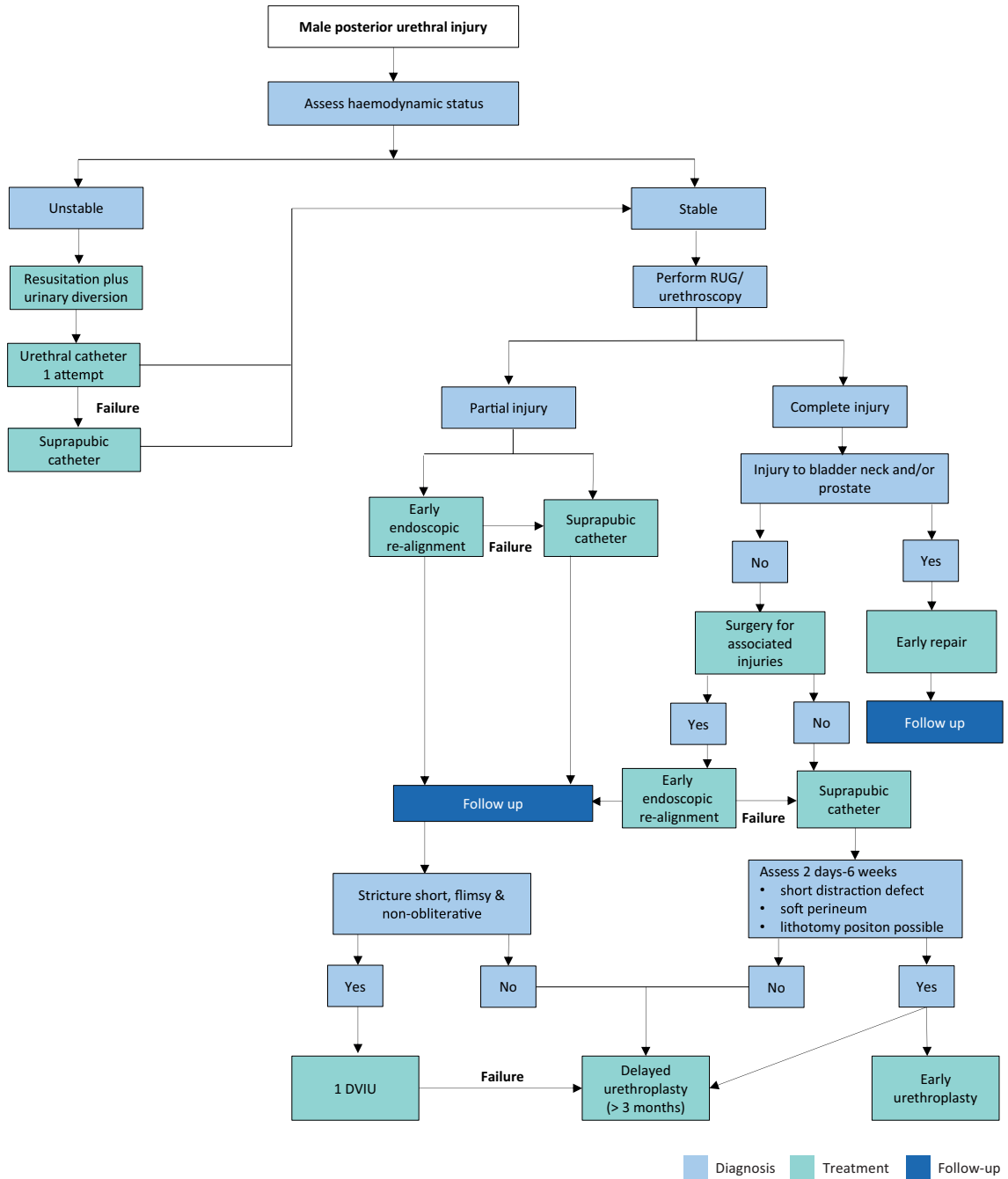


Figure 4.4.2: Management of posterior urethral injuries in men



RUG = retrograde urethrography; DVIU = direct visual internal urethrotomy.

## 4.5 Genital Trauma

### 4.5.1 Epidemiology, aetiology and pathophysiology

Of all urological injuries, 33-66% involve the external genitalia [291]. Genital trauma is much more common in males than in females, especially between the ages of 15 and 40 years. This is due to anatomical differences, increased frequency of road traffic accidents and increased participation in physical sports, war and crime [292]. The risk of associated injuries to neighbouring organs (bladder, urethra, vagina, rectum, and bowel), after blunt trauma is higher in females than in males.

Genital trauma is commonly caused by blunt injuries (80%). In males, blunt genital trauma frequently occurs unilaterally with approximately 1% presenting as bilateral scrotal or testicular injuries [293]. Any kind of contact sport, without the use of protective aids, may be associated with genital trauma. Off-road cycling, motor biking (especially on motorbikes with a dominant petrol tank), rugby, football and hockey are all activities associated with blunt testicular trauma [294-297]. Penetrating injuries are most commonly caused by firearms (75.8%) with the majority requiring surgical intervention [298, 299].

Accidents during sexual intercourse can also cause genital trauma; men of younger age are the most affected. The major pathologies are penile fractures, strangulation, necrosis, and assorted injuries from various sexual practices [300, 301].

The most important presentation of blunt penile trauma is penile fracture. The most common causes are sexual intercourse, forced flexion (taqaandan), masturbation and rolling over in 46%, 21%, 18% and 8.2%, respectively [302]. It has also been reported that penile fracture patients have a significantly higher rate of substance abuse [303]. The usual mechanism of injury is when the penis slips out of the vagina and strikes against the symphysis pubis or perineum. Sixty per cent of cases occur during consensual intercourse [304], with penile fracture more likely in certain positions [305]. Penile fracture is caused by rupture of the cavernosal tunica albuginea and may be associated with subcutaneous haematoma and lesions of the corpus spongiosum or urethra in 10-22% [306-308]. Genital injury is prevalent (42%) after sexual abuse [309].

Although animal bites are common, bites injuring the external genitalia are rare. Wounds are usually minor but have a risk of wound infection.

Gunshot injuries to the external genitalia are relatively uncommon and are usually not life-threatening; however, they can have a significant impact on quality of life. About 40-60% of all penetrating genito-urinary lesions involve the external genitalia [310, 311], 35% of these are gunshot wounds [293]. In a series of wartime injuries, the majority were caused by improvised explosive devices and other explosive ordinance, while smaller numbers of injuries were due to gunshot injuries [312]. In both males and females, penetrating injuries affect multiple organs in 70% of patients. In males, penetrating scrotal injuries affect both testes in 30% of cases compared with 1% in blunt injuries [293, 313]. Self-mutilation of the external genitalia has also been reported in psychotic patients and transsexuals [314]. Genital burns are rare in isolation and are usually due to industrial flames or chemicals [315]. Both male and female genital piercings increase the risk for unexpected genital trauma [316].

Traumatic dislocation of the testicle rarely occurs and is most common in victims of road traffic accidents [317-320]. Bilateral dislocation of the testes has been reported in up to 25% of cases [318]. Testicular rupture is found in approximately 50% of cases of direct blunt scrotal trauma [321, 322]. It may occur under intense compression of the testis against the inferior pubic ramus or symphysis, resulting in a rupture of the tunica albuginea. A force of approximately 50 kg is necessary to cause testicular rupture [323]. Most penile avulsion injuries are self-inflicted, but some are a result of industrial accidents or assault.

Coital injury of the female genital tract can happen during consensual sexual intercourse. Up to 35% of all genital injuries in women are sustained during their first sexual contact. The most frequently found injuries are lacerations [324]. Blunt trauma to the vulva is rarely reported and usually presents as a large haematoma. The incidence of traumatic vulvar haematomas after vaginal deliveries has been reported as one in 310 deliveries [325]. The presence of a vulvar haematoma is closely related to an increased risk of associated vaginal, pelvic, or abdominal injuries [326, 327]. Blunt injuries of the vulva and vagina are associated with pelvic trauma in 30%, after consensual intercourse in 25%, following sexual assault in 20%, and other blunt trauma in 15% [328].

#### 4.5.2 **Diagnostic evaluation**

##### 4.5.2.1 *Patient history and physical examination*

**Penile fracture** is associated with a sudden cracking or popping sound, pain and immediate detumescence. Local swelling of the penile shaft develops quickly, due to enlarging haematoma [240]. Bleeding may spread along the fascial layers of the penile shaft and extend to the lower abdominal wall if Buck's fascia is also ruptured. Sometimes, the rupture of the tunica may be palpable. Less severe penile injuries can be distinguished from penile fracture, as they are not usually associated with detumescence [302].

**Testicular rupture** is associated with immediate pain, nausea, vomiting, and sometimes fainting. The hemiscrotum is tender, swollen, and ecchymotic. The testis itself may be difficult to palpate. **Blunt vulvar** or perineal trauma in women may be associated with bleeding, pain and voiding problems, bladder catheterisation is usually required.

In genital trauma, a urinalysis should be performed. The presence of visible haematuria requires a retrograde urethrogram in males. In females, flexible or rigid cystoscopy is recommended to exclude urethral and bladder injury [326, 328]. In women with genital injuries and blood at the vaginal introitus, further gynaecological investigation is needed [326].



#### 4.5.3 **Imaging**

In cases of suspected penile fracture cavernosography, US or contrast-enhanced MRI [302, 329-331] can identify lacerations of the tunica albuginea in unclear cases [332], or provide reassurance that the tunica is intact. Magnetic resonance imaging is superior to US in diagnosing penile fracture [333, 334]. If a concomitant urethral injury is suspected, manage as outlined in section 4.4.

Ultrasound should be performed to determine intra- and/or extra-testicular haematoma, testicular contusion, or rupture [322, 335-343]. However, the literature is contradictory as to the usefulness of US compared to clinical examination alone. Some studies have reported convincing findings with a specificity of up to 98.6% [344]. Heterogeneous echo pattern of the testicular parenchyma with the loss of contour definition is a highly sensitive and specific radiographic finding for testicular rupture [333]. Others reported poor specificity (78%) and sensitivity (28%) for the differentiation between testicular rupture and haematocele, while accuracy is as low as 56% [336]. Colour Doppler-duplex US may provide useful information when used to evaluate testicular perfusion. If scrotal US is inconclusive, testicular CT or MRI may be helpful [345]; however, these techniques did not specifically increase the detection rates of testicular rupture [346].

#### 4.5.4 **Disease management**

##### 4.5.4.1 *Animal bites*

Local wound management depends on the extent of tissue destruction. Antibiotics should be prescribed in accordance with local resistance patterns [347-349]. The possibility of rabies infection must be considered, taking into account the geographical location, animal involved, specific nature of the wound and the type of attack (provoked/unprovoked). Elderly and immunosuppressed patients should be vaccinated with human rabies immunoglobulin and human diploid cell vaccine [350, 351].

##### 4.5.4.2 *Human bites*

In cases of human bites, apart from wound management, infection should be considered since transmission of viral diseases may occur, Hepatitis B vaccine/immunoglobulin and/or immunodeficiency virus (HIV) post-exposure prophylaxis should be offered. For further details, see Guidelines for the Management of Human Bite Injuries [352].

##### 4.5.4.3 *Blunt penile trauma*

Blunt trauma to the flaccid penis does not usually cause tearing of the tunica. Subcutaneous haematoma after sexual intercourse, without associated rupture of the cavernosal tunica albuginea, does not require surgical intervention. In these cases, non-steroidal analgesics and ice-packs are recommended [353].

##### 4.5.4.4 *Penile fracture*

The thickness of the tunica albuginea in the flaccid state (approximately 2 mm) decreases in erection to 0.25-0.5 mm and is therefore more vulnerable to traumatic injury [344, 354]. When a penile fracture is diagnosed, surgical intervention with closure of the tunica albuginea is recommended; it ensures the lowest rate of negative long-term sequelae and has no negative effect on the psychological wellbeing of the patient [355]. The approach is usually through a circumferential incision proximal to the coronal sulcus which enables complete degloving of the penis. Increasingly, local longitudinal incisions centred on the area of fracture or ventral longitudinal approaches are currently used [265]. A recent systematic review on the management of penile fractures concluded that immediate repair should be within 24 hours of presentation [356]; however, delayed presentation should not prevent exploration [305]. Further localisation may be gained with a flexible cystoscopy performed prior to incision, if urethral trauma is suspected and eventually proven [240]. Surgical closure of the tunica should be carried out using absorbable sutures.

##### 4.5.4.5 *Penetrating penile trauma*

In penetrating penile trauma non-operative management is recommended for small superficial injuries with intact Buck's fascia [310]. In more significant penetrating penile injuries, surgical exploration and debridement of necrotic tissue is recommended. Even in extended injuries of the penis, primary alignment of the disrupted tissues may allow for acceptable healing because of the robust penile blood supply [314].

The principles of care are debridement of devitalised tissue, with the preservation of as much viable tissues as possible, haemostasis, diversion of urine in selected cases and the removal of foreign bodies. Tissues of questionable viability may be left for subsequent definitive surgery. If a delayed repair is needed, depending on the type of injury and the extent of tissue damage, it usually takes place four to six weeks after the trauma has occurred.

The surgical approach depends upon the site and extent of the injury, but a subcoronal incision with penile degloving usually gives good exposure. Initially, a defect in the tunica albuginea should be closed after copious irrigation. If there has been too much tissue loss, the defect can be repaired either immediately or after delay with a patch (either from an autologous saphenous vein or xenograft).

The elasticity of genital skin means it is usually possible to manage the loss of a moderate amount of penile skin; however, management is more difficult in extensive injuries with significant skin loss. The tissue chosen for reconstruction following trauma needs to provide good coverage and must be suitable for reconstruction. Split-thickness skin grafting provides good coverage and a dependable take that is reproducible and durable. However, split-thickness grafts contract more than full-thickness grafts and their use on the penile shaft should be kept to a minimum. Skin grafts with thickness of at least 0.4 mm should be used in order to reduce the risk of contraction [314]. Full-thickness skin grafting onto the penile shaft gives less contracture, a better cosmetic appearance and more resistance to trauma during intercourse, when re-established [353]. The donor site may be taken from the abdomen, buttock, thigh, or axilla and is chosen according to surgeon's preference and the pattern of injury. In cases of extensive destruction of deeper tissues, or if later prosthetic placement is being considered, skin flaps, with their secure vascular supply, can be used.

#### 4.5.4.6 *Penile avulsion injuries and amputation*

Acute management involves resuscitation of the patient, and preparation for surgical re-implantation of the penis if it has been recovered and is not too badly damaged. Surgical re-implantation should be considered for all patients and should be performed within 24 hours of amputation [357].

The severed penis should be washed with sterile saline, wrapped in saline-soaked gauze, placed in a sterile bag, and immersed in iced water. The penis must not come into direct contact with the ice. A pressure dressing or a tourniquet should be placed around the penile stump to prevent excessive blood loss. Re-attachment can be achieved in a non-microsurgical way, but gives higher rates of post-operative urethral stricture and more problems with loss of sensation [358]. When operating microscopically, the corpora cavernosa and urethra are firstly aligned and repaired. Subsequently, the dorsal penile arteries, the dorsal vein and the dorsal nerves are anastomosed. The cavernosal arteries are generally too small to anastomose. The fascia and skin are closed in layers and both a urethral and a suprapubic catheter are placed [359].

If the severed penis cannot be found, or is unsuitable for re-attachment, then the end should be closed as it is done in partial penectomy. Later reconstruction may be employed to lengthen the penis (e.g., suspensory ligament division and V-Y plasty, pseudo-glans formation with split-thickness skin grafting, etc.). A delayed major reconstructive procedure, i.e. phalloplasty (either radial artery or pubic), is sometimes required for injuries which leave a very small or non-functioning penile stump [357].

#### 4.5.4.7 *Testicular dislocation*

It can be either a subcutaneous dislocation with epifascial displacement of the testis or an internal dislocation. In the latter, the testis is positioned in the superficial external inguinal ring, inguinal canal or abdominal cavity. Traumatic dislocation of the testis is treated by manual replacement and secondary orchidopexy. If primary manual reposition cannot be performed, immediate orchidopexy is indicated.

#### 4.5.4.8 *Haematocoele*

Conservative management is recommended in haematocoeles smaller than three times the size of the contralateral testis [360]. In large haematocoeles, non-operative management can fail, and delayed surgery (more than three days) is often required. Patients with large haematocoeles have a higher rate of orchiectomy than patients who undergo early surgery, even in non-ruptured testes [293, 314, 321, 361, 362]. Early surgical intervention results in preservation of the testis in more than 90% of cases compared to delayed surgeries which result in orchiectomy in 45-55% of patients [321]. In addition, non-operative management is also associated with prolonged hospital stays. Therefore, large haematocoeles should be treated surgically, irrespective of the presence of testicular contusion or rupture. At the very least, the blood clot should be evacuated from the tunica vaginalis sac to relieve disability and hasten recovery.

#### 4.5.4.9 *Testicular rupture*

It is essential to surgically explore equivocal patients whenever imaging studies cannot definitively exclude testicular rupture. This involves exploration with evacuation of blood clots and haematoma, excision of any necrotic testicular tubules and closure of the tunica albuginea, usually with running 3.0-absorbable sutures.

#### 4.5.4.10 *Penetrating scrotal trauma*

Penetrating injuries to the scrotum require surgical exploration with debridement of non-viable tissue. Depending on the extent of the injury, primary reconstruction of the testis and scrotum can usually be performed. In complete disruption of the spermatic cord, re-alignment without vaso-vasostomy may be considered if surgically feasible [363]. Staged secondary microsurgical vaso-vasostomy can be performed after

rehabilitation, although only a few cases have been reported [363]. If there is extensive destruction of the tunica albuginea, mobilisation of a free tunica vaginalis flap can be performed for testicular closure. If the patient is unstable or reconstruction cannot be achieved, orchiectomy is then indicated. Prophylactic antibiotics are recommended after scrotal penetrating trauma, although data to support this approach are lacking.

Extended laceration of scrotal skin requires surgical intervention for skin closure. Due to the elasticity of the scrotum, most defects can be primarily closed, even if the lacerated skin is only minimally attached to the scrotum [314]. Local wound management with extensive initial wound debridement and washout is important for scrotal convalescence. In the case of extensive loss of genital tissue, e.g., improvised explosive device blast injury, complex and staged reconstructive surgical procedures are often required [312]. Military testicular salvage rates increased over the last decades due to improvements of medical services (up to 67.6%) [364].

**Table 4.5.1: Summary of key points for penile fracture and testicular trauma**

<b>Summary of key points:</b>
<b>Penile fracture</b>
The most common causes of penile fracture are sexual intercourse, forced flexion, masturbation and rolling over.
Penile fracture is associated with a sudden cracking or popping sound, pain, immediate detumescence and local swelling.
MRI is superior to all other imaging techniques in diagnosing penile fracture.
Management of penile fracture is surgical intervention with closure of the tunica albuginea.
<b>Testicular Trauma</b>
Blunt testicular injury may occur under intense compression of the testis against the inferior pubic ramus or symphysis, resulting in a rupture of the tunica albuginea.
Testicular rupture is associated with immediate pain, nausea, vomiting, and sometimes fainting.
Scrotal US is the preferred imaging modality for the diagnosis of testicular trauma.
Surgical exploration in patients with testicular trauma ensures preservation of viable tissue when possible.

#### 4.5.5 **Complications**

The possibility of complications from genital trauma, including psychological effects, erectile dysfunction, urethral stricture, and infertility, is high. In patients with a history of penile fracture post-operative complications were reported in up to 20% of cases, development of plaques or nodules following surgery, post-operative curvature formation and erectile dysfunction occur in 13.9%, 2.8% and 1.9% of patients, respectively [302]. Post-surgical erectile dysfunction is more common in patients > 50 years and those with bilateral corporal involvement [365]. Skin necrosis is rare [305]. The tear size of the tunica albuginea is a parameter which may affect long-term follow-up results [366].

Conservative management of penile fracture increases complications, such as penile abscess, missed urethral disruption, penile curvature, and persistent haematoma requiring delayed surgical intervention [367]. Late complications after conservative management were fibrosis and angulations in 35% and impotence in up to 62% [304, 368].

Post-operative complications were reported in 8% of patients who underwent testicular repair after penetrating trauma [310]. Despite good management and regular follow-up of external genital gunshot wounds, such wounds are fraught with the possibility of complications such as erectile dysfunction, urethral stricture, and infertility. Delayed complications include chronic pain and testicular atrophy. Haematoceles initially treated non-operatively may eventually need delayed surgery if they develop infection or undue pain. Genital injuries are rarely life threatening, but fertility and testosterone production often become the male trauma patient's chief concern once acute issues are resolved [369].

#### 4.5.6 **Follow-up**

In patients with genital trauma follow-up should focus on diagnosis of and therapy for late complications. Erectile dysfunction, urethral stricture and assessment of fertility are the main concerns [308, 370].

#### 4.5.7 Summary of evidence and recommendations for evaluation and management of genital trauma.

Summary of evidence	LE
A concomitant urethral injury complicates penile fractures and requires specialised management.	3
Ultrasound can determine intra- and/or extra-testicular haematoma, testicular contusion, or rupture with heterogeneous echo pattern parenchyma and loss of contour definition a highly sensitive and specific finding.	3
Surgical treatment of penile fracture ensures the lowest rate of negative long-term sequelae on functional and psychological wellbeing of the patient.	3
In patients with testicular rupture or equivocal imaging, surgical exploration can secure preservation of viable tissue.	3

Recommendations	Strength rating
Exclude urethral injury in the case of penile fracture.	Strong
Perform ultrasound (US) for the diagnosis of testis trauma.	Strong
Treat penile fractures surgically, with closure of tunica albuginea.	Strong
Explore the injured testis in all cases of testicular rupture and in those with inconclusive US findings.	Strong

## 5. REFERENCES

- Radmayr, C., *et al.* EAU Guidelines on Paediatric Urology. In: EAU Guidelines published at the 38<sup>th</sup> EAU Annual Congress, Milan 2023. Arnhem, The Netherlands.  
<https://uroweb.org/guidelines/paediatric-urology>
- Martinez-Pineiro, L., *et al.* EAU Guidelines on Urethral Trauma. *Eur Urol*, 2010. 57: 791.  
<https://pubmed.ncbi.nlm.nih.gov/20122789/>
- Summerton, D.J., *et al.* EAU guidelines on iatrogenic trauma. *Eur Urol*, 2012. 62: 628.  
<https://pubmed.ncbi.nlm.nih.gov/22717550/>
- Lumen, N., *et al.* Review of the current management of lower urinary tract injuries by the EAU Trauma Guidelines Panel. *Eur Urol*, 2015. 67: 925.  
<https://pubmed.ncbi.nlm.nih.gov/25576009/>
- Serafetinides, E., *et al.* Review of the current management of upper urinary tract injuries by the EAU Trauma Guidelines Panel. *Eur Urol*, 2015. 67: 930.  
<https://pubmed.ncbi.nlm.nih.gov/25578621/>
- Guyatt, G.H., *et al.* GRADE: an emerging consensus on rating quality of evidence and strength of recommendations. *BMJ*, 2008. 336: 924.  
<https://pubmed.ncbi.nlm.nih.gov/18436948/>
- Guyatt, G.H., *et al.* What is "quality of evidence" and why is it important to clinicians? *BMJ*, 2008. 336: 995.  
<https://pubmed.ncbi.nlm.nih.gov/18456631/>
- Phillips B, *et al.* Oxford Centre for Evidence-based Medicine Levels of Evidence. Updated by Jeremy Howick March 2009. 1998.  
<https://www.cebm.net/2009/06/oxford-centre-evidence-based-medicine-levels-evidence-march-2009/>
- Guyatt, G.H., *et al.* Going from evidence to recommendations. *BMJ*, 2008. 336: 1049.  
<https://pubmed.ncbi.nlm.nih.gov/18467413/>
- WHO. Injuries and violence. 2021. 2022.  
<https://www.who.int/news-room/fact-sheets/detail/injuries-and-violence>
- Middleton, P., The trauma epidemic, In: *Major Trauma*, G.I. Smith J, Porter K., Editor. 2010, Oxford University Press.: Oxford.
- Kozar, R.A., *et al.* Organ injury scaling 2018 update: Spleen, liver, and kidney. *J Trauma Acute Care Surg*, 2018. 85: 1119.  
<https://www.aast.org/resources-detail/injury-scoring-scale#kidney>

13. Monstrey, S.J., *et al.* Urological trauma and severe associated injuries. *Br J Urol*, 1987. 60: 393.  
<https://pubmed.ncbi.nlm.nih.gov/3427315/>
14. MacKenzie, E.J., *et al.* A national evaluation of the effect of trauma-center care on mortality. *N Engl J Med*, 2006. 354: 366.  
<https://pubmed.ncbi.nlm.nih.gov/16436768/>
15. Caterson, E.J., *et al.* Boston bombings: a surgical view of lessons learned from combat casualty care and the applicability to Boston's terrorist attack. *J Craniofac Surg*, 2013. 24: 1061.  
<https://pubmed.ncbi.nlm.nih.gov/23851738/>
16. Baloch, P., *et al.* Impact of Hospital Volume on the Outcomes of Renal Trauma Management. *Eur Urol Open Sci*, 2022. 37: 99.  
<https://pubmed.ncbi.nlm.nih.gov/35243394/>
17. Feliciano D.V., *et al.*, Trauma damage control, In: *Trauma*, F.D. Mattox KL, Moore EE, Editor. 2000, McGraw-Hill: New York.
18. Hirshberg, A., *et al.* 'Damage control' in trauma surgery. *Br J Surg*, 1993. 80: 1501.  
<https://pubmed.ncbi.nlm.nih.gov/8298911/>
19. Rignault, D.P. Recent progress in surgery for the victims of disaster, terrorism, and war—Introduction. *World J Surg*, 1992. 16: 885.  
<https://pubmed.ncbi.nlm.nih.gov/1462624/>
20. Rotondo, M.F., *et al.* 'Damage control': an approach for improved survival in exsanguinating penetrating abdominal injury. *J Trauma*, 1993. 35: 375.  
<https://pubmed.ncbi.nlm.nih.gov/8371295/>
21. Slater, M.S., *et al.* Terrorism in America. An evolving threat. *Arch Surg*, 1997. 132: 1059.  
<https://pubmed.ncbi.nlm.nih.gov/9336502/>
22. Frykberg, E.R. Medical management of disasters and mass casualties from terrorist bombings: how can we cope? *J Trauma*, 2002. 53: 201.  
<https://pubmed.ncbi.nlm.nih.gov/12169923/>
23. Jacobs, L.M., Jr., *et al.* An emergency medical system approach to disaster planning. *J Trauma*, 1979. 19: 157.  
<https://pubmed.ncbi.nlm.nih.gov/458880/>
24. Eberle, B.M., *et al.* Thromboembolic prophylaxis with low-molecular-weight heparin in patients with blunt solid abdominal organ injuries undergoing nonoperative management: current practice and outcomes. *J Trauma*, 2011. 70: 141.  
<https://pubmed.ncbi.nlm.nih.gov/21217492/>
25. Barrera, L.M., *et al.* Thromboprophylaxis for trauma patients. *Cochrane Database Syst Rev*, 2013: CD008303.  
<https://pubmed.ncbi.nlm.nih.gov/23543562/>
26. Werner, Z., *et al.* Implementation of a Standardized Renal Trauma Protocol at a Level 1 Trauma Center: 7-Year Protocol and 10-Year Institutional Review. *Res Rep Urol*, 2022. 14: 79.  
<https://pubmed.ncbi.nlm.nih.gov/35321535/>
27. Meng, M.V., *et al.* Renal trauma: indications and techniques for surgical exploration. *World J Urol*, 1999. 17: 71.  
<https://pubmed.ncbi.nlm.nih.gov/10367364/>
28. Wessells, H., *et al.* Renal injury and operative management in the United States: results of a population-based study. *J Trauma*, 2003. 54: 423.  
<https://pubmed.ncbi.nlm.nih.gov/12634519/>
29. Sujenthiran, A., *et al.* Is Nonoperative Management the Best First-line Option for High-grade Renal trauma? A Systematic Review. *Eur Urol Focus*, 2017.  
<https://pubmed.ncbi.nlm.nih.gov/28753890/>
30. Mingoli, A., *et al.* Operative and nonoperative management for renal trauma: comparison of outcomes. A systematic review and meta-analysis. *Ther Clin Risk Manag*, 2017. 13: 1127.  
<https://pubmed.ncbi.nlm.nih.gov/28894376/>
31. Santucci, R.A., *et al.* Evaluation and management of renal injuries: consensus statement of the renal trauma subcommittee. *BJU Int*, 2004. 93: 937.  
<https://pubmed.ncbi.nlm.nih.gov/15142141/>
32. Kansas, B.T., *et al.* Incidence and management of penetrating renal trauma in patients with multiorgan injury: extended experience at an inner city trauma center. *J Urol*, 2004. 172: 1355.  
<https://pubmed.ncbi.nlm.nih.gov/15371841/>
33. Najibi, S., *et al.* Civilian gunshot wounds to the genitourinary tract: incidence, anatomic distribution, associated injuries, and outcomes. *Urology*, 2010. 76: 977.  
<https://pubmed.ncbi.nlm.nih.gov/20605196/>

34. Shariat, S.F., *et al.* Evidence-based validation of the predictive value of the American Association for the Surgery of Trauma kidney injury scale. *J Trauma*, 2007. 62: 933.  
<https://pubmed.ncbi.nlm.nih.gov/17426551/>
35. Santucci, R.A., *et al.* Validation of the American Association for the Surgery of Trauma organ injury severity scale for the kidney. *J Trauma*, 2001. 50: 195.  
<https://pubmed.ncbi.nlm.nih.gov/11242281/>
36. Malaeb, B., *et al.* Should blunt segmental vascular renal injuries be considered an American Association for the Surgery of Trauma Grade 4 renal injury? *J Trauma Acute Care Surg*, 2014. 76: 484.  
<https://pubmed.ncbi.nlm.nih.gov/24458054/>
37. Moore, E.E., *et al.* AAST Scoring system for organ specific injuries. 2018.  
<https://www.aast.org/resources-detail/injury-scoring-scale>
38. Keihani, S., *et al.* The American Association for the Surgery of Trauma renal injury grading scale: Implications of the 2018 revisions for injury reclassification and predicting bleeding interventions. *J Trauma Acute Care Surg*, 2020. 88: 357.  
<https://pubmed.ncbi.nlm.nih.gov/31876692/>
39. Sierink, J.C., *et al.* Systematic review and meta-analysis of immediate total-body computed tomography compared with selective radiological imaging of injured patients. *Br J Surg*, 2012. 99 Suppl 1: 52.  
<https://pubmed.ncbi.nlm.nih.gov/22441856/>
40. Huber-Wagner, S., *et al.* Effect of whole-body CT during trauma resuscitation on survival: a retrospective, multicentre study. *Lancet*, 2009. 373: 1455.  
<https://pubmed.ncbi.nlm.nih.gov/19321199/>
41. Cachecho, R., *et al.* Management of the trauma patient with pre-existing renal disease. *Crit Care Clin*, 1994. 10: 523.  
<https://pubmed.ncbi.nlm.nih.gov/7922736/>
42. Cozar, J.M., *et al.* [Management of injury of the solitary kidney]. *Arch Esp Urol*, 1990. 43: 15.  
<https://pubmed.ncbi.nlm.nih.gov/2331159/>
43. Sebastia, M.C., *et al.* Renal trauma in occult ureteropelvic junction obstruction: CT findings. *Eur Radiol*, 1999. 9: 611.  
<https://pubmed.ncbi.nlm.nih.gov/10354870/>
44. Buchberger, W., *et al.* [Diagnosis and staging of blunt kidney trauma. A comparison of urinalysis, i.v. urography, sonography and computed tomography]. *Rofo*, 1993. 158: 507.  
<https://pubmed.ncbi.nlm.nih.gov/8507839/>
45. Carroll, P.R., *et al.* Renovascular trauma: risk assessment, surgical management, and outcome. *J Trauma*, 1990. 30: 547.  
<https://pubmed.ncbi.nlm.nih.gov/2342137/>
46. Schmidlin, F.R., *et al.* The higher injury risk of abnormal kidneys in blunt renal trauma. *Scand J Urol Nephrol*, 1998. 32: 388.  
<https://pubmed.ncbi.nlm.nih.gov/9925001/>
47. Chandhoke, P.S., *et al.* Detection and significance of microscopic hematuria in patients with blunt renal trauma. *J Urol*, 1988. 140: 16.  
<https://pubmed.ncbi.nlm.nih.gov/3379684/>
48. Heyns, C.F. Renal trauma: indications for imaging and surgical exploration. *BJU Int*, 2004. 93: 1165.  
<https://pubmed.ncbi.nlm.nih.gov/15142132/>
49. Sheth S, *et al.* ACR Appropriateness Criteria®; renal trauma. 2012.  
<http://www.guideline.gov/content.aspx?id=43881>
50. Morey, A.F., *et al.* Urotrauma: AUA guideline. *J Urol*, 2014. 192: 327.  
<https://pubmed.ncbi.nlm.nih.gov/24857651/>
51. McCombie, S.P., *et al.* The conservative management of renal trauma: a literature review and practical clinical guideline from Australia and New Zealand. *BJU Int*, 2014. 114 Suppl 1: 13.  
<https://pubmed.ncbi.nlm.nih.gov/25124459/>
52. Heller, M.T., *et al.* MDCT of renal trauma: correlation to AAST organ injury scale. *Clin Imaging*, 2014. 38: 410.  
<https://pubmed.ncbi.nlm.nih.gov/24667041/>
53. Fischer, W., *et al.* JOURNAL CLUB: Incidence of Urinary Leak and Diagnostic Yield of Excretory Phase CT in the Setting of Renal Trauma. *AJR Am J Roentgenol*, 2015. 204: 1168.  
<https://pubmed.ncbi.nlm.nih.gov/26001225/>
54. Colling, K.P., *et al.* Computed tomography scans with intravenous contrast: low incidence of contrast-induced nephropathy in blunt trauma patients. *J Trauma Acute Care Surg*, 2014. 77: 226.  
<https://pubmed.ncbi.nlm.nih.gov/25058246/>

55. Valentino, M., *et al.* Contrast-enhanced US evaluation in patients with blunt abdominal trauma(). *J Ultrasound*, 2010. 13: 22.  
<https://pubmed.ncbi.nlm.nih.gov/23396012/>
56. Mihalik, J.E., *et al.* The use of contrast-enhanced ultrasound for the evaluation of solid abdominal organ injury in patients with blunt abdominal trauma. *J Trauma Acute Care Surg*, 2012. 73: 1100.  
<https://pubmed.ncbi.nlm.nih.gov/22832765/>
57. Cagini, L., *et al.* Contrast enhanced ultrasound (CEUS) in blunt abdominal trauma. *Crit Ultrasound J*, 2013. 5 Suppl 1: S9.  
<https://pubmed.ncbi.nlm.nih.gov/23902930/>
58. Ku, J.H., *et al.* Is there a role for magnetic resonance imaging in renal trauma? *Int J Urol*, 2001. 8: 261.  
<https://pubmed.ncbi.nlm.nih.gov/11389740/>
59. Leppaniemi, A., *et al.* MRI and CT in blunt renal trauma: an update. *Semin Ultrasound CT MR*, 1997. 18: 129.  
<https://pubmed.ncbi.nlm.nih.gov/9163832/>
60. Bjurlin, M.A., *et al.* Impact of Trauma Center Designation and Interfacility Transfer on Renal Trauma Outcomes: Evidence for Universal Management. *Eur Urol Focus*, 2019. 5: 1135.  
<https://pubmed.ncbi.nlm.nih.gov/29934273/>
61. Schmidlin, F.R., *et al.* [The conservative treatment of major kidney injuries]. *Ann Urol (Paris)*, 1997. 31: 246.  
<https://pubmed.ncbi.nlm.nih.gov/9480627/>
62. Thall, E.H., *et al.* Conservative management of penetrating and blunt Type III renal injuries. *Br J Urol*, 1996. 77: 512.  
<https://pubmed.ncbi.nlm.nih.gov/8777609/>
63. Alsikafi, N.F., *et al.* Nonoperative management outcomes of isolated urinary extravasation following renal lacerations due to external trauma. *J Urol*, 2006. 176: 2494.  
<https://pubmed.ncbi.nlm.nih.gov/17085140/>
64. Buckley, J.C., *et al.* Selective management of isolated and nonisolated grade IV renal injuries. *J Urol*, 2006. 176: 2498.  
<https://pubmed.ncbi.nlm.nih.gov/17085141/>
65. Locke, J.A., *et al.* Management of high-grade renal traumas with collecting system injuries. *Can Urol Assoc J*, 2021. 15: E588.  
<https://pubmed.ncbi.nlm.nih.gov/33999807/>
66. Moudouni, S.M., *et al.* Management of major blunt renal lacerations: is a nonoperative approach indicated? *Eur Urol*, 2001. 40: 409.  
<https://pubmed.ncbi.nlm.nih.gov/11713395/>
67. Keihani, S., *et al.* Contemporary management of high-grade renal trauma: Results from the American Association for the Surgery of Trauma Genitourinary Trauma study. *J Trauma Acute Care Surg*, 2018. 84: 418.  
<https://pubmed.ncbi.nlm.nih.gov/29298242/>
68. Elliott, S.P., *et al.* Renal arterial injuries: a single center analysis of management strategies and outcomes. *J Urol*, 2007. 178: 2451.  
<https://pubmed.ncbi.nlm.nih.gov/17937955/>
69. Sartorelli, K.H., *et al.* Nonoperative management of hepatic, splenic, and renal injuries in adults with multiple injuries. *J Trauma*, 2000. 49: 56.  
<https://pubmed.ncbi.nlm.nih.gov/10912858/>
70. Toutouzas, K.G., *et al.* Nonoperative management of blunt renal trauma: a prospective study. *Am Surg*, 2002. 68: 1097.  
<https://pubmed.ncbi.nlm.nih.gov/12516817/>
71. Dugi, D.D., 3rd, *et al.* American Association for the Surgery of Trauma grade 4 renal injury substratification into grades 4a (low risk) and 4b (high risk). *J Urol*, 2010. 183: 592.  
<https://pubmed.ncbi.nlm.nih.gov/20018329/>
72. Hammer, C.C., *et al.* Effect of an institutional policy of nonoperative treatment of grades I to IV renal injuries. *J Urol*, 2003. 169: 1751.  
<https://pubmed.ncbi.nlm.nih.gov/12686825/>
73. Jawas, A., *et al.* Management algorithm for complete blunt renal artery occlusion in multiple trauma patients: case series. *Int J Surg*, 2008. 6: 317.  
<https://pubmed.ncbi.nlm.nih.gov/18590988/>

74. Keihani, S., *et al.* A nomogram predicting the need for bleeding interventions after high-grade renal trauma: Results from the American Association for the Surgery of Trauma Multi-institutional Genito-Urinary Trauma Study (MiGUTS). *J Trauma Acute Care Surg*, 2019. 86: 774.  
<https://pubmed.ncbi.nlm.nih.gov/30741884/>
75. Armenakas, N.A., *et al.* Indications for nonoperative management of renal stab wounds. *J Urol*, 1999. 161: 768.  
<https://pubmed.ncbi.nlm.nih.gov/10022681/>
76. Jansen, J.O., *et al.* Selective non-operative management of abdominal gunshot wounds: survey of practise. *Injury*, 2013. 44: 639.  
<https://pubmed.ncbi.nlm.nih.gov/22341771/>
77. El Hechi, M.W., *et al.* Contemporary management of penetrating renal trauma - A national analysis. *Injury*, 2020. 51: 32.  
<https://pubmed.ncbi.nlm.nih.gov/31540800/>
78. Bernath, A.S., *et al.* Stab wounds of the kidney: conservative management in flank penetration. *J Urol*, 1983. 129: 468.  
<https://pubmed.ncbi.nlm.nih.gov/6834529/>
79. Wessells, H., *et al.* Criteria for nonoperative treatment of significant penetrating renal lacerations. *J Urol*, 1997. 157: 24.  
<https://pubmed.ncbi.nlm.nih.gov/8976207/>
80. du Plessis, W.M., *et al.* High grade renal trauma: Does the mechanism of penetrating injury influence renal salvage rate? *Injury*, 2022. 53: 76.  
<https://pubmed.ncbi.nlm.nih.gov/34456038/>
81. DuBose, J., *et al.* Selective non-operative management of solid organ injury following abdominal gunshot wounds. *Injury*, 2007. 38: 1084.  
<https://pubmed.ncbi.nlm.nih.gov/17544428/>
82. Shefler, A., *et al.* [The role of nonoperative management of penetrating renal trauma]. *Harefuah*, 2007. 146: 345.  
<https://pubmed.ncbi.nlm.nih.gov/17674549/>
83. Hope, W.W., *et al.* Non-operative management in penetrating abdominal trauma: is it feasible at a Level II trauma center? *J Emerg Med*, 2012. 43: 190.  
<https://pubmed.ncbi.nlm.nih.gov/22051843/>
84. Raza, S.J., *et al.* Outcomes of renal salvage for penetrating renal trauma: a single institution experience. *Can J Urol*, 2018. 25: 9323.  
<https://pubmed.ncbi.nlm.nih.gov/29900820/>
85. Liguori, G., *et al.* The role of angioembolization in the management of blunt renal injuries: a systematic review. *BMC Urol*, 2021. 21: 104.  
<https://pubmed.ncbi.nlm.nih.gov/34362352/>
86. Charbit, J., *et al.* What are the specific computed tomography scan criteria that can predict or exclude the need for renal angioembolization after high-grade renal trauma in a conservative management strategy? *J Trauma*, 2011. 70: 1219.  
<https://pubmed.ncbi.nlm.nih.gov/21610436/>
87. Lin, W.C., *et al.* Computed tomographic imaging in determining the need of embolization for high-grade blunt renal injury. *J Trauma Acute Care Surg*, 2013. 74: 230.  
<https://pubmed.ncbi.nlm.nih.gov/23271099/>
88. Lanchon, C., *et al.* High Grade Blunt Renal Trauma: Predictors of Surgery and Long-Term Outcomes of Conservative Management. A Prospective Single Center Study. *J Urol*, 2016. 195: 106.  
<https://pubmed.ncbi.nlm.nih.gov/26254724/>
89. Shoobridge, J.J., *et al.* A 9-year experience of renal injury at an Australian level 1 trauma centre. *BJU Int*, 2013. 112 Suppl 2: 53.  
<https://pubmed.ncbi.nlm.nih.gov/23418742/>
90. van der Wilden, G.M., *et al.* Successful nonoperative management of the most severe blunt renal injuries: a multicenter study of the research consortium of New England Centers for Trauma. *JAMA Surg*, 2013. 148: 924.  
<https://pubmed.ncbi.nlm.nih.gov/23945834/>
91. Baboudjian, M., *et al.* Factors Predictive of Selective Angioembolization Failure for Moderate- to High-grade Renal Trauma: A French Multi-institutional Study. *Eur Urol Focus*, 2022. 8: 253.  
<https://pubmed.ncbi.nlm.nih.gov/33509672/>
92. Kwon, H., *et al.* Volume preservation of a shattered kidney after blunt trauma by superselective renal artery embolization. *Diagn Interv Radiol*, 2022. 28: 72.  
<https://pubmed.ncbi.nlm.nih.gov/35142614/>



93. Salvatori, F., *et al.* Endovascular management of vascular renal injuries: outcomes and comparison between traumatic and iatrogenic settings. *Urologia*, 2022. 89: 167.  
<https://pubmed.ncbi.nlm.nih.gov/34011230/>
94. Huber, J., *et al.* Selective transarterial embolization for posttraumatic renal hemorrhage: a second try is worthwhile. *J Urol*, 2011. 185: 1751.  
<https://pubmed.ncbi.nlm.nih.gov/21420122/>
95. Baboudjian, M., *et al.* Factors Predictive of Selective Angioembolization Failure for Moderate- to High-grade Renal Trauma: A French Multi-institutional Study. *Eur Urol Focus*, 2021.  
<https://pubmed.ncbi.nlm.nih.gov/33509672/>
96. Hotaling, J.M., *et al.* Analysis of diagnostic angiography and angioembolization in the acute management of renal trauma using a national data set. *J Urol*, 2011. 185: 1316.  
<https://pubmed.ncbi.nlm.nih.gov/21334643/>
97. Saour, M., *et al.* Effect of renal angioembolization on post-traumatic acute kidney injury after high-grade renal trauma: a comparative study of 52 consecutive cases. *Injury*, 2014. 45: 894.  
<https://pubmed.ncbi.nlm.nih.gov/24456608/>
98. Xu, H., *et al.* A Comparative Study of Conservation, Endovascular Embolization Therapy, and Surgery for Blunt Renal Trauma. *Med Sci Monit*, 2020. 26: e922802.  
<https://pubmed.ncbi.nlm.nih.gov/32372763/>
99. Moolman, C., *et al.* Nonoperative management of penetrating kidney injuries: a prospective audit. *J Urol*, 2012. 188: 169.  
<https://pubmed.ncbi.nlm.nih.gov/22591960/>
100. Koch, G.E., *et al.* The Impact of Delayed-Phase Imaging at Admission on the Management of Urinary Extravasation in High-Grade Renal Trauma. *J Urol*, 2021. 206: 1373.  
<https://pubmed.ncbi.nlm.nih.gov/34288717/>
101. Davis, P., *et al.* Assessing the usefulness of delayed imaging in routine followup for renal trauma. *J Urol*, 2010. 184: 973.  
<https://pubmed.ncbi.nlm.nih.gov/20643462/>
102. Deininger, C., *et al.* On the black slope: analysis of the course of a blunt renal trauma collective in a winter sports region. *Eur J Trauma Emerg Surg*, 2022. 48: 2125.  
<https://pubmed.ncbi.nlm.nih.gov/34914004/>
103. Hadjipavlou, M., *et al.* Managing penetrating renal trauma: experience from two major trauma centres in the UK. *BJU Int*, 2018. 121: 928.  
<https://pubmed.ncbi.nlm.nih.gov/29438587/>
104. Husmann, D.A., *et al.* Major renal lacerations with a devitalized fragment following blunt abdominal trauma: a comparison between nonoperative (expectant) versus surgical management. *J Urol*, 1993. 150: 1774.  
<https://pubmed.ncbi.nlm.nih.gov/8230501/>
105. Glykas, I., *et al.* Conservative management of grade 4 and 5 renal injuries: A high-volume trauma center experience. *Urologia*, 2021. 88: 287.  
<https://pubmed.ncbi.nlm.nih.gov/34075839/>
106. McAninch, J.W., *et al.* Renal reconstruction after injury. *J Urol*, 1991. 145: 932.  
<https://pubmed.ncbi.nlm.nih.gov/2016804/>
107. Robert, M., *et al.* Management of major blunt renal lacerations: surgical or nonoperative approach? *Eur Urol*, 1996. 30: 335.  
<https://pubmed.ncbi.nlm.nih.gov/8931966/>
108. Nash, P.A., *et al.* Nephrectomy for traumatic renal injuries. *J Urol*, 1995. 153: 609.  
<https://pubmed.ncbi.nlm.nih.gov/7861494/>
109. Gonzalez, R.P., *et al.* Surgical management of renal trauma: is vascular control necessary? *J Trauma*, 1999. 47: 1039.  
<https://pubmed.ncbi.nlm.nih.gov/10608530/>
110. Rostas, J., *et al.* Intraoperative management of renal gunshot injuries: is mandatory exploration of Gerota's fascia necessary? *Am J Surg*, 2016. 211: 783.  
<https://pubmed.ncbi.nlm.nih.gov/26867480/>
111. Davis, K.A., *et al.* Predictors of the need for nephrectomy after renal trauma. *J Trauma*, 2006. 60: 164.  
<https://pubmed.ncbi.nlm.nih.gov/16456451/>
112. Wright, J.L., *et al.* Renal and extrarenal predictors of nephrectomy from the national trauma data bank. *J Urol*, 2006. 175: 970.  
<https://pubmed.ncbi.nlm.nih.gov/16469594/>
113. DiGiacomo, J.C., *et al.* The role of nephrectomy in the acutely injured. *Arch Surg*, 2001. 136: 1045.  
<https://pubmed.ncbi.nlm.nih.gov/11529828/>

114. Brandes, S.B., *et al.* Reconstructive surgery for trauma of the upper urinary tract. *Urol Clin North Am*, 1999. 26: 183.  
<https://pubmed.ncbi.nlm.nih.gov/10086060/>
115. Shekariz, B., *et al.* The use of fibrin sealant in urology. *J Urol*, 2002. 167: 1218.  
<https://pubmed.ncbi.nlm.nih.gov/11832701/>
116. Knudson, M.M., *et al.* Outcome after major renovascular injuries: a Western trauma association multicenter report. *J Trauma*, 2000. 49: 1116.  
<https://pubmed.ncbi.nlm.nih.gov/11130498/>
117. Tillou, A., *et al.* Renal vascular injuries. *Surg Clin North Am*, 2001. 81: 1417.  
<https://pubmed.ncbi.nlm.nih.gov/11766183/>
118. Tasian, G.E., *et al.* Evaluation of renal function after major renal injury: correlation with the American Association for the Surgery of Trauma Injury Scale. *J Urol*, 2010. 183: 196.  
<https://pubmed.ncbi.nlm.nih.gov/19913819/>
119. Fiard, G., *et al.* Long-term renal function assessment with dimercapto-succinic acid scintigraphy after conservative treatment of major renal trauma. *J Urol*, 2012. 187: 1306.  
<https://pubmed.ncbi.nlm.nih.gov/22341289/>
120. Wessells, H., *et al.* Preservation of renal function after reconstruction for trauma: quantitative assessment with radionuclide scintigraphy. *J Urol*, 1997. 157: 1583.  
<https://pubmed.ncbi.nlm.nih.gov/9112481/>
121. Montgomery, R.C., *et al.* Posttraumatic renovascular hypertension after occult renal injury. *J Trauma*, 1998. 45: 106.  
<https://pubmed.ncbi.nlm.nih.gov/9680021/>
122. Heyns, C.F., *et al.* Increasing role of angiography and segmental artery embolization in the management of renal stab wounds. *J Urol*, 1992. 147: 1231.  
<https://pubmed.ncbi.nlm.nih.gov/1569655/>
123. Monstrey, S.J., *et al.* Renal trauma and hypertension. *J Trauma*, 1989. 29: 65.  
<https://pubmed.ncbi.nlm.nih.gov/2911106/>
124. Lebech, A., *et al.* [Hypertension following blunt kidney injury]. *Ugeskr Laeger*, 1990. 152: 994.  
<https://pubmed.ncbi.nlm.nih.gov/2183457/>
125. Wang, K.T., *et al.* Late development of renal arteriovenous fistula following gunshot trauma—a case report. *Angiology*, 1998. 49: 415.  
<https://pubmed.ncbi.nlm.nih.gov/9591535/>
126. Elliott, S.P., *et al.* Ureteral injuries: external and iatrogenic. *Urol Clin North Am*, 2006. 33: 55.  
<https://pubmed.ncbi.nlm.nih.gov/16488280/>
127. Blackwell, R.H., *et al.* Complications of Recognized and Unrecognized Iatrogenic Ureteral Injury at Time of Hysterectomy: A Population Based Analysis. *J Urol*, 2018. 199: 1540.  
<https://pubmed.ncbi.nlm.nih.gov/29408429/>
128. Pereira, B.M., *et al.* A review of ureteral injuries after external trauma. *Scand J Trauma Resusc Emerg Med*, 2010. 18: 6.  
<https://pubmed.ncbi.nlm.nih.gov/20128905/>
129. McGeady, J.B., *et al.* Current epidemiology of genitourinary trauma. *Urol Clin North Am*, 2013. 40: 323.  
<https://pubmed.ncbi.nlm.nih.gov/23905930/>
130. Siram, S.M., *et al.* Ureteral trauma: patterns and mechanisms of injury of an uncommon condition. *Am J Surg*, 2010. 199: 566.  
<https://pubmed.ncbi.nlm.nih.gov/20359576/>
131. Brandes, S., *et al.* Diagnosis and management of ureteric injury: an evidence-based analysis. *BJU Int*, 2004. 94: 277.  
<https://pubmed.ncbi.nlm.nih.gov/15291852/>
132. Johnson, D.B., *et al.* Complications of ureteroscopy. *Urol Clin North Am*, 2004. 31: 157.  
<https://pubmed.ncbi.nlm.nih.gov/15040412/>
133. Chou, M.T., *et al.* Prophylactic ureteral catheterization in gynecologic surgery: a 12-year randomized trial in a community hospital. *Int Urogynecol J Pelvic Floor Dysfunct*, 2009. 20: 689.  
<https://pubmed.ncbi.nlm.nih.gov/19165412/>
134. Delacroix, S.E., Jr., *et al.* Urinary tract injuries: recognition and management. *Clin Colon Rectal Surg*, 2010. 23: 104.  
<https://pubmed.ncbi.nlm.nih.gov/21629628/>
135. Visco, A.G., *et al.* Cost-effectiveness of universal cystoscopy to identify ureteral injury at hysterectomy. *Obstet Gynecol*, 2001. 97: 685.  
<https://pubmed.ncbi.nlm.nih.gov/11339916/>

136. Halabi, W.J., *et al.* Ureteral injuries in colorectal surgery: an analysis of trends, outcomes, and risk factors over a 10-year period in the United States. *Dis Colon Rectum*, 2014. 57: 179.  
<https://pubmed.ncbi.nlm.nih.gov/24401879/>
137. Ding, G., *et al.* Etiology and Ureteral Reconstruction Strategy for Iatrogenic Ureteral Injuries: A Retrospective Single-Center Experience. *Urol Int*, 2021. 105: 470.  
<https://pubmed.ncbi.nlm.nih.gov/33744882/>
138. Mayo, J.S., *et al.* Ureteral injuries in colorectal surgery and the impact of laparoscopic and robotic-assisted approaches. *Surg Endosc*, 2021. 35: 2805.  
<https://pubmed.ncbi.nlm.nih.gov/32591939/>
139. Petersen, S.S., *et al.* Rate of Urologic Injury with Robotic Hysterectomy. *J Minim Invasive Gynecol*, 2018. 25: 867.  
<https://pubmed.ncbi.nlm.nih.gov/29337210/>
140. Benson, C.R., *et al.* Bladder and ureteral injuries during benign hysterectomy: an observational cohort analysis in New York State. *World J Urol*, 2020. 38: 2049.  
<https://pubmed.ncbi.nlm.nih.gov/30406476/>
141. Chang, E.J., *et al.* Vesicoureteral Injury during Benign Hysterectomy: Minimally Invasive Laparoscopic Surgery versus Laparotomy. *J Minim Invasive Gynecol*, 2020. 27: 1354.  
<https://pubmed.ncbi.nlm.nih.gov/31743796/>
142. Loftus, C.J., *et al.* Ureteral Wall Injury with Ureteral Access Sheaths: A Randomized Prospective Trial. *J Endourol*, 2020. 34: 932.  
<https://pubmed.ncbi.nlm.nih.gov/30526031/>
143. Schoenthaler, M., *et al.* Postureteroscopic lesion scale: a new management modified organ injury scale—evaluation in 435 ureteroscopy patients. *J Endourol*, 2012. 26: 1425.  
<https://pubmed.ncbi.nlm.nih.gov/22698147/>
144. Fulla, J., *et al.* Ureteral Diameter as Predictor of Ureteral Injury during Ureteral Access Sheath Placement. *J Urol*, 2021. 205: 159.  
<https://pubmed.ncbi.nlm.nih.gov/32717166/>
145. Kim, J.K., *et al.* Silodosin for Prevention of Ureteral Injuries Resulting from Insertion of a Ureteral Access Sheath: A Randomized Controlled Trial. *Eur Urol Focus*, 2021.  
<https://pubmed.ncbi.nlm.nih.gov/33741297/>
146. Schimpf, M.O., *et al.* Universal ureteral stent placement at hysterectomy to identify ureteral injury: a decision analysis. *BJOG*, 2008. 115: 1151.  
<https://pubmed.ncbi.nlm.nih.gov/18518875/>
147. Hesselman, S., *et al.* Effect of remote cesarean delivery on complications during hysterectomy: a cohort study. *Am J Obstet Gynecol*, 2017. 217: 564 e1.  
<https://pubmed.ncbi.nlm.nih.gov/28735704/>
148. Gilmour, D.T., *et al.* Rates of urinary tract injury from gynecologic surgery and the role of intraoperative cystoscopy. *Obstet Gynecol*, 2006. 107: 1366.  
<https://pubmed.ncbi.nlm.nih.gov/16738165/>
149. Wu, H.H., *et al.* The detection of ureteral injuries after hysterectomy. *J Minim Invasive Gynecol*, 2006. 13: 403.  
<https://pubmed.ncbi.nlm.nih.gov/16962522/>
150. Safrai, M., *et al.* Urinary tract injuries during cesarean delivery: long-term outcome and management. *J Matern Fetal Neonatal Med*, 2020: 1.  
<https://pubmed.ncbi.nlm.nih.gov/33016166/>
151. Pokala, N., *et al.* A randomized controlled trial comparing simultaneous intra-operative vs sequential prophylactic ureteric catheter insertion in re-operative and complicated colorectal surgery. *Int J Colorectal Dis*, 2007. 22: 683.  
<https://pubmed.ncbi.nlm.nih.gov/17031654/>
152. Hird, A.E., *et al.* Does prophylactic ureteric stenting at the time of colorectal surgery reduce the risk of ureteric injury? A systematic review and meta-analysis. *Colorectal Dis*, 2021. 23: 1060.  
<https://pubmed.ncbi.nlm.nih.gov/33340227/>
153. Williams, A.C., *et al.* Ureteric complications and left retroperitoneal abdominal aortic surgery. *ANZ J Surg*, 2020. 90: 2502.  
<https://pubmed.ncbi.nlm.nih.gov/32902084/>
154. Jhaveri, J.K., *et al.* Ureteral injuries sustained during robot-assisted radical prostatectomy. *J Endourol*, 2014. 28: 318.  
<https://pubmed.ncbi.nlm.nih.gov/24147874/>
155. Kunkle, D.A., *et al.* Delayed diagnosis of traumatic ureteral injuries. *J Urol*, 2006. 176: 2503.  
<https://pubmed.ncbi.nlm.nih.gov/17085143/>

156. Parpala-Sparman, T., *et al.* Increasing numbers of ureteric injuries after the introduction of laparoscopic surgery. *Scand J Urol Nephrol*, 2008. 42: 422.  
<https://pubmed.ncbi.nlm.nih.gov/18609278/>
157. Medina, D., *et al.* Ureteral trauma: preoperative studies neither predict injury nor prevent missed injuries. *J Am Coll Surg*, 1998. 186: 641.  
<https://pubmed.ncbi.nlm.nih.gov/9632150/>
158. Serkin, F.B., *et al.* Combat urologic trauma in US military overseas contingency operations. *J Trauma*, 2010. 69 Suppl 1: S175.  
<https://pubmed.ncbi.nlm.nih.gov/20622614/>
159. Alabousi, A., *et al.* Multi-modality imaging of the leaking ureter: why does detection of traumatic and iatrogenic ureteral injuries remain a challenge? *Emerg Radiol*, 2017. 24: 417.  
<https://pubmed.ncbi.nlm.nih.gov/28451770/>
160. Orcutt, D., *et al.* Ureteral Injuries Secondary to Blunt Abdominal Trauma: A 15-Year Review of Presentation, Management, and Outcomes at a Level 1 Trauma Center. *Urology*, 2022. 164: 248.  
<https://pubmed.ncbi.nlm.nih.gov/35278492/>
161. Coakley, K.M., *et al.* Prophylactic Ureteral Catheters for Colectomy: A National Surgical Quality Improvement Program-Based Analysis. *Dis Colon Rectum*, 2018. 61: 84.  
<https://pubmed.ncbi.nlm.nih.gov/29215477/>
162. White, L.A., *et al.* Intraureteral indocyanine green augments ureteral identification and avoidance during complex robotic-assisted colorectal surgery. *Colorectal Dis*, 2021. 23: 718.  
<https://pubmed.ncbi.nlm.nih.gov/33064915/>
163. Kanabur, P., *et al.* Use of Indocyanine Green for Intraoperative Ureteral Identification in Nonurologic Surgery. *JAMA Surg*, 2020. 155: 520.  
<https://pubmed.ncbi.nlm.nih.gov/32186665/>
164. Kominsky, H.D., *et al.* Does Timing of Diagnosis and Management of Iatrogenic Ureter Injuries Affect Outcomes? Experience From a Tertiary Center. *Urology*, 2021. 149: 240.  
<https://pubmed.ncbi.nlm.nih.gov/33309708/>
165. Fontana, F., *et al.* Diagnostic and Interventional Radiology Management of Ureteral Iatrogenic Leakage after Gynecologic Surgery. *Diagnostics (Basel)*, 2021. 11.  
<https://pubmed.ncbi.nlm.nih.gov/33922190/>
166. Kim, T.N., *et al.* Three different laparoscopic techniques for the management of iatrogenic ureteral injury: A multi-institutional study with medium-term outcomes. *Asian J Surg*, 2021. 44: 964.  
<https://pubmed.ncbi.nlm.nih.gov/33608203/>
167. Smith, T.G., 3rd, *et al.* Damage control maneuvers for urologic trauma. *Urol Clin North Am*, 2013. 40: 343.  
<https://pubmed.ncbi.nlm.nih.gov/23905932/>
168. Mendonca, S.J., *et al.* Real-World Practice Patterns Favor Minimally Invasive Methods over Ureteral Reconstruction in the Initial Treatment of Severe Blunt Ureteral Trauma: A National Trauma Data Bank Analysis. *J Urol*, 2021. 205: 470.  
<https://pubmed.ncbi.nlm.nih.gov/32897815/>
169. Koukouras, D., *et al.* Percutaneous minimally invasive management of iatrogenic ureteral injuries. *J Endourol*, 2010. 24: 1921.  
<https://pubmed.ncbi.nlm.nih.gov/20964484/>
170. El Abd, A.S., *et al.* Immediate and late management of iatrogenic ureteric injuries: 28 years of experience. *Arab J Urol*, 2015. 13: 250.  
<https://pubmed.ncbi.nlm.nih.gov/26609443/>
171. Png, J.C., *et al.* Principles of ureteric reconstruction. *Curr Opin Urol*, 2000. 10: 207.  
<https://pubmed.ncbi.nlm.nih.gov/10858898/>
172. Tracey, A.T., *et al.* Robotic-assisted laparoscopic repair of ureteral injury: an evidence-based review of techniques and outcomes. *Minerva Urol Nefrol*, 2018. 70: 231.  
<https://pubmed.ncbi.nlm.nih.gov/29595044/>
173. Khan, F., *et al.* Management of ureteropelvic junction obstruction in adults. *Nat Rev Urol*, 2014. 11: 629.  
<https://pubmed.ncbi.nlm.nih.gov/25287785/>
174. Burks, F.N., *et al.* Management of iatrogenic ureteral injury. *Ther Adv Urol*, 2014. 6: 115.  
<https://pubmed.ncbi.nlm.nih.gov/24883109/>
175. Wenske, S., *et al.* Outcomes of distal ureteral reconstruction through reimplantation with psoas hitch, Boari flap, or ureteroneocystostomy for benign or malignant ureteral obstruction or injury. *Urology*, 2013. 82: 231.  
<https://pubmed.ncbi.nlm.nih.gov/23642933/>

176. Chung, B.I., *et al.* The use of bowel for ureteral replacement for complex ureteral reconstruction: long-term results. *J Urol*, 2006. 175: 179.  
<https://pubmed.ncbi.nlm.nih.gov/16406903/>
177. Armatys, S.A., *et al.* Use of ileum as ureteral replacement in urological reconstruction. *J Urol*, 2009. 181: 177.  
<https://pubmed.ncbi.nlm.nih.gov/19013597/>
178. Meng, M.V., *et al.* Expanded experience with laparoscopic nephrectomy and autotransplantation for severe ureteral injury. *J Urol*, 2003. 169: 1363.  
<https://pubmed.ncbi.nlm.nih.gov/12629362/>
179. Decaestecker, K., *et al.* Robot-assisted Kidney Autotransplantation: A Minimally Invasive Way to Salvage Kidneys. *Eur Urol Focus*, 2018. 4: 198.  
<https://pubmed.ncbi.nlm.nih.gov/30093358/>
180. Zhao, L.C., *et al.* Robotic Ureteral Reconstruction Using Buccal Mucosa Grafts: A Multi-institutional Experience. *Eur Urol*, 2017. 73(3):419.  
<https://pubmed.ncbi.nlm.nih.gov/29239749/>
181. Elawdy, M.M., *et al.* Iatrogenic ureteral injuries: a case series analysis with an emphasis on the predictors of late ureteral strictures and unfavorable outcome in different surgical specialties. *Int Urogynecol J*, 2020. 7(6):1476.  
<https://pubmed.ncbi.nlm.nih.gov/33175225/>
182. Ficarra, V., *et al.* A Contemporary Case Series of Complex Surgical Repair of Surgical/Endoscopic Injuries to the Abdominal Ureter. *Eur Urol Focus*, 2020.  
<https://pubmed.ncbi.nlm.nih.gov/32814683/>
183. Pereira, B.M., *et al.* Bladder injuries after external trauma: 20 years experience report in a population-based cross-sectional view. *World J Urol*, 2013. 31: 913.  
<https://pubmed.ncbi.nlm.nih.gov/22544337/>
184. Figler, B.D., *et al.* Multi-disciplinary update on pelvic fracture associated bladder and urethral injuries. *Injury*, 2012. 43: 1242.  
<https://pubmed.ncbi.nlm.nih.gov/22592152/>
185. Wirth, G.J., *et al.* Advances in the management of blunt traumatic bladder rupture: experience with 36 cases. *BJU Int*, 2010. 106: 1344.  
<https://pubmed.ncbi.nlm.nih.gov/20438556/>
186. Deibert, C.M., *et al.* The association between operative repair of bladder injury and improved survival: results from the National Trauma Data Bank. *J Urol*, 2011. 186: 151.  
<https://pubmed.ncbi.nlm.nih.gov/21575961/>
187. Matlock, K.A., *et al.* Blunt traumatic bladder rupture: a 10-year perspective. *Am Surg*, 2013. 79: 589.  
<https://pubmed.ncbi.nlm.nih.gov/23711268/>
188. Johnsen, N.V., *et al.* Epidemiology of Blunt Lower Urinary Tract Trauma With and Without Pelvic Fracture. *Urology*, 2017. 102: 234.  
<https://pubmed.ncbi.nlm.nih.gov/28043650/>
189. Cho, J., *et al.* Severe Bleeding in Pelvic Fractures: Considerations in Planning Damage Control. *Am Surg*, 2018. 84: 267.  
<https://pubmed.ncbi.nlm.nih.gov/29580357/>
190. Johnsen, N.V., *et al.* Evaluating the Role of Operative Repair of Extraperitoneal Bladder Rupture Following Blunt Pelvic Trauma. *J Urol*, 2016. 195: 661.  
<https://pubmed.ncbi.nlm.nih.gov/608301987/>
191. Urry, R.J., *et al.* The incidence, spectrum and outcomes of traumatic bladder injuries within the Pietermaritzburg Metropolitan Trauma Service. *Injury*, 2016. 47: 1057.  
<https://pubmed.ncbi.nlm.nih.gov/26854075/>
192. Cinman, N.M., *et al.* Gunshot wounds to the lower urinary tract: a single-institution experience. *J Trauma Acute Care Surg*, 2013. 74: 725.  
<https://pubmed.ncbi.nlm.nih.gov/23425728/>
193. Al-Azzawi, I.S., *et al.* Lower genitourinary trauma in modern warfare: the experience from civil violence in Iraq. *Injury*, 2014. 45: 885.  
<https://pubmed.ncbi.nlm.nih.gov/24485550/>
194. Williams, M., *et al.* Management of combat-related urological trauma in the modern era. *Nat Rev Urol*, 2013. 10: 504.  
<https://pubmed.ncbi.nlm.nih.gov/23877722/>
195. Cordon, B.H., *et al.* Iatrogenic nonendoscopic bladder injuries over 24 years: 127 cases at a single institution. *Urology*, 2014. 84: 222.  
<https://pubmed.ncbi.nlm.nih.gov/24857278/>

196. Ford, A.A., *et al.* Mid-urethral sling operations for stress urinary incontinence in women. *Cochrane Database Syst Rev*, 2017. 7: CD006375.  
<https://pubmed.ncbi.nlm.nih.gov/28756647/>
197. Golan, S., *et al.* Transurethral resection of bladder tumour complicated by perforation requiring open surgical repair - clinical characteristics and oncological outcomes. *BJU Int*, 2011. 107: 1065.  
<https://pubmed.ncbi.nlm.nih.gov/20860654/>
198. El Hayek, O.R., *et al.* Evaluation of the incidence of bladder perforation after transurethral bladder tumor resection in a residency setting. *J Endourol*, 2009. 23: 1183.  
<https://pubmed.ncbi.nlm.nih.gov/19530900/>
199. Sugihara, T., *et al.* Comparison of perioperative outcomes including severe bladder injury between monopolar and bipolar transurethral resection of bladder tumors: a population based comparison. *J Urol*, 2014. 192: 1355.  
<https://pubmed.ncbi.nlm.nih.gov/24893311/>
200. Venkatramani, V., *et al.* Monopolar versus bipolar transurethral resection of bladder tumors: a single center, parallel arm, randomized, controlled trial. *J Urol*, 2014. 191: 1703.  
<https://pubmed.ncbi.nlm.nih.gov/24333244/>
201. Collado, A., *et al.* Early complications of endoscopic treatment for superficial bladder tumors. *J Urol*, 2000. 164: 1529.  
<https://pubmed.ncbi.nlm.nih.gov/11025697/>
202. Shazly, S.A., *et al.* Robotic radical hysterectomy in early stage cervical cancer: A systematic review and meta-analysis. *Gynecol Oncol*, 2015. 138: 457.  
<https://pubmed.ncbi.nlm.nih.gov/26056752/>
203. Billfeldt, N.K., *et al.* A Swedish population-based evaluation of benign hysterectomy, comparing minimally invasive and abdominal surgery. *Eur J Obstet Gynecol Reprod Biol*, 2018. 222: 113.  
<https://pubmed.ncbi.nlm.nih.gov/29408741/>
204. Tarney, C.M. Bladder Injury During Cesarean Delivery. *Curr Womens Health Rev*, 2013. 9: 70.  
<https://pubmed.ncbi.nlm.nih.gov/24876830/>
205. Honore, C., *et al.* HIPEC for peritoneal carcinomatosis: does an associated urologic procedure increase morbidity? *Ann Surg Oncol*, 2012. 19: 104.  
<https://pubmed.ncbi.nlm.nih.gov/21638092/>
206. Sawkar, H.P., *et al.* Frequency of lower urinary tract injury after gastrointestinal surgery in the nationwide inpatient sample database. *Am Surg*, 2014. 80: 1216.  
<https://pubmed.ncbi.nlm.nih.gov/25513920/>
207. Kockerling, F., *et al.* TEP versus TAPP: comparison of the perioperative outcome in 17,587 patients with a primary unilateral inguinal hernia. *Surg Endosc*, 2015. 29: 3750.  
<https://pubmed.ncbi.nlm.nih.gov/25805239/>
208. Balbay, M.D., *et al.* The actual incidence of bladder perforation following transurethral bladder surgery. *J Urol*, 2005. 174: 2260.  
<https://pubmed.ncbi.nlm.nih.gov/16280794/>
209. Nieder, A.M., *et al.* Transurethral bladder tumor resection: intraoperative and postoperative complications in a residency setting. *J Urol*, 2005. 174: 2307.  
<https://pubmed.ncbi.nlm.nih.gov/16280830/>
210. Welk, B.K., *et al.* Are male slings for post-prostatectomy incontinence a valid option? *Curr Opin Urol*, 2010. 20: 465.  
<https://pubmed.ncbi.nlm.nih.gov/20838219/>
211. Novara, G., *et al.* Updated systematic review and meta-analysis of the comparative data on colposuspensions, pubovaginal slings, and midurethral tapes in the surgical treatment of female stress urinary incontinence. *Eur Urol*, 2010. 58: 218.  
<https://pubmed.ncbi.nlm.nih.gov/20434257/>
212. Maher, C., *et al.* Transvaginal mesh or grafts compared with native tissue repair for vaginal prolapse. *Cochrane Database Syst Rev*, 2016. 2: Cd012079.  
<https://pubmed.ncbi.nlm.nih.gov/26858090/>
213. Maher, C.F., *et al.* Laparoscopic sacral colpopexy versus total vaginal mesh for vaginal vault prolapse: a randomized trial. *Am J Obstet Gynecol*, 2011. 204: 360 e1.  
<https://pubmed.ncbi.nlm.nih.gov/21306698/>
214. Ogah, J., *et al.* Minimally invasive synthetic suburethral sling operations for stress urinary incontinence in women: a short version Cochrane review. *Neurourol Urodyn*, 2011. 30: 284.  
<https://pubmed.ncbi.nlm.nih.gov/21412819/>

215. Eidelman, E., *et al.* Injury severity score associated with concurrent bladder injury in patients with blunt urethral injury. *World J Urol*, 2019. 37: 983.  
<https://pubmed.ncbi.nlm.nih.gov/30178288/>
216. Pereira, B.M., *et al.* Penetrating bladder trauma: a high risk factor for associated rectal injury. *Adv Urol*, 2014. 2014: 386280.  
<https://pubmed.ncbi.nlm.nih.gov/24527030/>
217. Clarke-Pearson, D.L., *et al.* Complications of hysterectomy. *Obstet Gynecol*, 2013. 121: 654.  
<https://pubmed.ncbi.nlm.nih.gov/23635631/>
218. Chill, H.H., *et al.* Urinary bladder injury during cesarean delivery: risk factors and the role of retrograde bladder filling. *Int Urogynecol J*, 2021. 32: 1801.  
<https://pubmed.ncbi.nlm.nih.gov/33386865/>
219. Manikandan, R., *et al.* Percutaneous peritoneal drainage for intraperitoneal bladder perforations during transurethral resection of bladder tumors. *J Endourol*, 2003. 17: 945.  
<https://pubmed.ncbi.nlm.nih.gov/14744369/>
220. Patel, B.N., *et al.* Imaging of iatrogenic complications of the urinary tract: kidneys, ureters, and bladder. *Radiol Clin North Am*, 2014. 52: 1101.  
<https://pubmed.ncbi.nlm.nih.gov/25173661/>
221. Lehnert, B.E., *et al.* Lower male genitourinary trauma: a pictorial review. *Emerg Radiol*, 2014. 21: 67.  
<https://pubmed.ncbi.nlm.nih.gov/24052083/>
222. Quagliano, P.V., *et al.* Diagnosis of blunt bladder injury: A prospective comparative study of computed tomography cystography and conventional retrograde cystography. *J Trauma*, 2006. 61: 410.  
<https://pubmed.ncbi.nlm.nih.gov/16917459/>
223. Ramchandani, P., *et al.* Imaging of genitourinary trauma. *AJR Am J Roentgenol*, 2009. 192: 1514.  
<https://pubmed.ncbi.nlm.nih.gov/19457813/>
224. Alperin, M., *et al.* Conservative management of postoperatively diagnosed cystotomy. *Urology*, 2009. 73: 1163 e17.  
<https://pubmed.ncbi.nlm.nih.gov/18514295/>
225. Teeluckdharry, B., *et al.* Urinary Tract Injury at Benign Gynecologic Surgery and the Role of Cystoscopy: A Systematic Review and Meta-analysis. *Obstet Gynecol*, 2015. 126: 1161.  
<https://pubmed.ncbi.nlm.nih.gov/26551173/>
226. Stember, D.S., *et al.* Outcomes of abdominal wall reservoir placement in inflatable penile prosthesis implantation: a safe and efficacious alternative to the space of Retzius. *J Sex Med*, 2014. 11: 605.  
<https://pubmed.ncbi.nlm.nih.gov/24286533/>
227. Oh, J.S., *et al.* Effectiveness of the combat pelvic protection system in the prevention of genital and urinary tract injuries: An observational study. *J Trauma Acute Care Surg*, 2015. 79: S193.  
<https://pubmed.ncbi.nlm.nih.gov/26406430/>
228. Pansadoro, A., *et al.* Conservative treatment of intraperitoneal bladder perforation during transurethral resection of bladder tumor. *Urology*, 2002. 60: 682.  
<https://pubmed.ncbi.nlm.nih.gov/12385934/>
229. Inaba, K., *et al.* Selective nonoperative management of torso gunshot wounds: when is it safe to discharge? *J Trauma*, 2010. 68: 1301.  
<https://pubmed.ncbi.nlm.nih.gov/20539173/>
230. Anderson, R.E., *et al.* Current Management of Extraperitoneal Bladder Injuries: Results from the Multi-Institutional Genito-Urinary Trauma Study (MiGUTS). *J Urol*, 2020. 204: 538.  
<https://pubmed.ncbi.nlm.nih.gov/32259467/>
231. Yao, H.H., *et al.* Lower risk of pelvic metalware infection with operative repair of concurrent bladder rupture. *ANZ J Surg*, 2018. 88: 560.  
<https://pubmed.ncbi.nlm.nih.gov/29124851/>
232. Khabiri, S.S., *et al.* Extraperitoneal Bladder Injuries Associated With Pelvic Fracture Requiring Internal Fixation: What Is the Evidence? *Am Surg*, 2021. 87: 1203.  
<https://pubmed.ncbi.nlm.nih.gov/33350852/>
233. Culhane, J., *et al.* Minimally invasive management versus open surgery in the treatment of penetrating bladder injuries: a retrospective cohort study. *BMC Urol*, 2021. 21: 138.  
<https://pubmed.ncbi.nlm.nih.gov/34583674/>
234. Lee, J.S., *et al.* Urologic complications following obstetric and gynecologic surgery. *Korean J Urol*, 2012. 53: 795.  
<https://pubmed.ncbi.nlm.nih.gov/23185673/>
235. Traxer, O., *et al.* Technique and complications of transurethral surgery for bladder tumours. *BJU Int*, 2004. 94: 492.  
<https://pubmed.ncbi.nlm.nih.gov/15329099/>

236. MacDonald, S., *et al.* Complications of Transvaginal Mesh for Pelvic Organ Prolapse and Stress Urinary Incontinence: Tips for Prevention, Recognition, and Management. *Eur Urol Focus*, 2016. 2: 260.  
<https://pubmed.ncbi.nlm.nih.gov/613218127/>
237. Inaba, K., *et al.* Prospective evaluation of the utility of routine postoperative cystogram after traumatic bladder injury. *J Trauma Acute Care Surg*, 2013. 75: 1019.  
<https://pubmed.ncbi.nlm.nih.gov/24256676/>
238. Johnsen, N.V., *et al.* Clinical Utility of Routine Follow-up Cystography in the Management of Traumatic Bladder Ruptures. *Urology*, 2018. 113: 230.  
<https://pubmed.ncbi.nlm.nih.gov/29174624/>
239. Latini, J.M., *et al.* SIU/ICUD Consultation On Urethral Strictures: Epidemiology, etiology, anatomy, and nomenclature of urethral stenoses, strictures, and pelvic fracture urethral disruption injuries. *Urology*, 2014. 83: S1.  
<https://pubmed.ncbi.nlm.nih.gov/24210733/>
240. Falcone, M., *et al.* Current Management of Penile Fracture: An Up-to-Date Systematic Review. *Sex Med Rev*, 2017.  
<https://pubmed.ncbi.nlm.nih.gov/28874325/>
241. Barros, R., *et al.* Primary urethral reconstruction results in penile fracture. *Ann R Coll Surg Engl*, 2018. 100: 21.  
<https://pubmed.ncbi.nlm.nih.gov/29022780/>
242. Bjurlin, M.A., *et al.* Clinical characteristics and surgical outcomes of penetrating external genital injuries. *J Trauma Acute Care Surg*, 2013. 74: 839.  
<https://pubmed.ncbi.nlm.nih.gov/23425745/>
243. Ratkal, J.M., *et al.* Electric Wire as Foreign Body in the Bladder and Urethra-a Case Report and Review of Literature. *Indian J Surg*, 2015. 77: 1323.  
<https://pubmed.ncbi.nlm.nih.gov/27011559/>
244. Palminteri, E., *et al.* Contemporary urethral stricture characteristics in the developed world. *Urology*, 2013. 81: 191.  
<https://pubmed.ncbi.nlm.nih.gov/23153951/>
245. Davis, N.F., *et al.* Incidence, Cost, Complications and Clinical Outcomes of Iatrogenic Urethral Catheterization Injuries: A Prospective Multi-Institutional Study. *J Urol*, 2016. 196: 1473.  
<https://pubmed.ncbi.nlm.nih.gov/27317985/>
246. Bhatt, N.R., *et al.* A prospective audit on the effect of training and educational workshops on the incidence of urethral catheterization injuries. *Can Urol Assoc J*, 2017. 11: E302.  
<https://pubmed.ncbi.nlm.nih.gov/28761592/>
247. Kashefi, C., *et al.* Incidence and prevention of iatrogenic urethral injuries. *J Urol*, 2008. 179: 2254.  
<https://pubmed.ncbi.nlm.nih.gov/18423712/>
248. Price, D., *et al.* Outcomes of a Nurse-Led Difficult Urinary Catheter Team in an Academic Medical Center. *J Nurs Care Qual*, 2020. 35: 309.  
<https://pubmed.ncbi.nlm.nih.gov/31972779/>
249. Bugeja, S., *et al.* A new urethral catheterisation device (UCD) to manage difficult urethral catheterisation. *World J Urol*, 2019. 37: 595.  
<https://pubmed.ncbi.nlm.nih.gov/30251050/>
250. Davis, N.F., *et al.* Clinical Evaluation of a Safety-device to Prevent Urinary Catheter Inflation Related Injuries. *Urology*, 2018. 115: 179.  
<https://pubmed.ncbi.nlm.nih.gov/29501711/>
251. Liao, X., *et al.* Effects of hydrophilic coated catheters on urethral trauma, microtrauma and adverse events with intermittent catheterization in patients with bladder dysfunction: a systematic review and meta-analysis. *Int Urol Nephrol*, 2022. 54: 1461.  
<https://pubmed.ncbi.nlm.nih.gov/35449382/>
252. Sexton, S.J., *et al.* Survey on the Contemporary Management of Intraoperative Urethral Injuries During Penile Prosthesis Implantation. *J Sex Med*, 2018. 15: 576.  
<https://pubmed.ncbi.nlm.nih.gov/29523475/>
253. Battaloglu, E., *et al.* Urethral injury in major trauma. *Injury*, 2019. 50: 1053.  
<https://pubmed.ncbi.nlm.nih.gov/30857738/>
254. Barratt, R.C., *et al.* Pelvic fracture urethral injury in males-mechanisms of injury, management options and outcomes. *Transl Androl Urol*, 2018. 7: S29.  
<https://pubmed.ncbi.nlm.nih.gov/29644168/>



255. Mundy, A.R., *et al.* Urethral trauma. Part I: introduction, history, anatomy, pathology, assessment and emergency management. *BJU Int*, 2011. 108: 310.  
<https://pubmed.ncbi.nlm.nih.gov/21771241/>
256. Mundy, A.R., *et al.* Pelvic fracture-related injuries of the bladder neck and prostate: their nature, cause and management. *BJU Int*, 2010. 105: 1302.  
<https://pubmed.ncbi.nlm.nih.gov/19874306/>
257. Mundy, A.R., *et al.* Urethral trauma. Part II: Types of injury and their management. *BJU Int*, 2011. 108: 630.  
<https://pubmed.ncbi.nlm.nih.gov/21854524/>
258. Blaschko, S.D., *et al.* The incidence of erectile dysfunction after pelvic fracture urethral injury: A systematic review and meta-analysis. *Arab J Urol*, 2015. 13: 68.  
<https://pubmed.ncbi.nlm.nih.gov/26019983/>
259. Sylla, P., *et al.* Urethral Injury and Other Urologic Injuries During Transanal Total Mesorectal Excision: An International Collaborative Study. *Ann Surg*, 2019. 274: e115.  
<https://pubmed.ncbi.nlm.nih.gov/31567502/>
260. Patel, D.N., *et al.* Female urethral injuries associated with pelvic fracture: a systematic review of the literature. *BJU Int*, 2017. 120: 766.  
<https://pubmed.ncbi.nlm.nih.gov/28805298/>
261. Gomes, C.M., *et al.* Update on complications of synthetic suburethral slings. *Int Braz J Urol*, 2017. 43: 822.  
<https://pubmed.ncbi.nlm.nih.gov/28266818/>
262. Brandes, S. Initial management of anterior and posterior urethral injuries. *Urol Clin North Am*, 2006. 33: 87.  
<https://pubmed.ncbi.nlm.nih.gov/16488283/>
263. Gomez, R.G., *et al.* SIU/ICUD Consultation on Urethral Strictures: Pelvic fracture urethral injuries. *Urology*, 2014. 83: S48.  
<https://pubmed.ncbi.nlm.nih.gov/24210734/>
264. Black, P.C., *et al.* Urethral and bladder neck injury associated with pelvic fracture in 25 female patients. *J Urol*, 2006. 175: 2140.  
<https://pubmed.ncbi.nlm.nih.gov/16697821/>
265. Mazaris, E.M., *et al.* Penile fractures: immediate surgical approach with a midline ventral incision. *BJU Int*, 2009. 104: 520.  
<https://pubmed.ncbi.nlm.nih.gov/19239439/>
266. Kamdar, C., *et al.* Penile fracture: preoperative evaluation and surgical technique for optimal patient outcome. *BJU Int*, 2008. 102: 1640.  
<https://pubmed.ncbi.nlm.nih.gov/18710448/>
267. Horiguchi, A., *et al.* Pubourethral Stump Angle Measured on Preoperative Magnetic Resonance Imaging Predicts Urethroplasty Type for Pelvic Fracture Urethral Injury Repair. *Urology*, 2018. 112: 198.  
<https://pubmed.ncbi.nlm.nih.gov/29158171/>
268. Barros, R., *et al.* Urethral injury in penile fracture: a narrative review. *Int Braz J Urol*, 2020. 46: 152.  
<https://pubmed.ncbi.nlm.nih.gov/31961620/>
269. Kunkle, D.A., *et al.* Evaluation and management of gunshot wounds of the penis: 20-year experience at an urban trauma center. *J Trauma*, 2008. 64: 1038.  
<https://pubmed.ncbi.nlm.nih.gov/18404072/>
270. Zhang, Y., *et al.* Emergency treatment of male blunt urethral trauma in China: Outcome of different methods in comparison with other countries. *Asian J Urol*, 2018. 5: 78.  
<https://pubmed.ncbi.nlm.nih.gov/29736369/>
271. Peng, X., *et al.* Straddle injuries to the bulbar urethra: What is the best choice for immediate management? *J Trauma Acute Care Surg*, 2019. 87: 892.  
<https://pubmed.ncbi.nlm.nih.gov/31205218/>
272. Scherzer, N.D., *et al.* Penile Prosthesis Complications: Planning, Prevention, and Decision Making. *Sex Med Rev*, 2019. 7: 349.  
<https://pubmed.ncbi.nlm.nih.gov/30033128/>
273. Elgammal, M.A. Straddle injuries to the bulbar urethra: management and outcome in 53 patients. *Int Braz J Urol*, 2009. 35: 450.  
<https://pubmed.ncbi.nlm.nih.gov/19719861/>
274. Wang, J., *et al.* Outcomes of early endoscopic realignment for blunt straddle injuries to the bulbar urethra: a single-center retrospective study. *BMC Surg*, 2022. 22: 33.  
<https://pubmed.ncbi.nlm.nih.gov/35090431/>

275. Maheshwari, P.N., *et al.* Immediate endoscopic management of complete iatrogenic anterior urethral injuries: a case series with long-term results. *BMC Urol*, 2005. 5: 13.  
<https://pubmed.ncbi.nlm.nih.gov/16281970/>
276. Tausch, T.J., *et al.* Gunshot wound injuries of the prostate and posterior urethra: reconstructive armamentarium. *J Urol*, 2007. 178: 1346.  
<https://pubmed.ncbi.nlm.nih.gov/17706720/>
277. Johnsen, N.V., *et al.* Risk of infectious complications in pelvic fracture urethral injury patients managed with internal fixation and suprapubic catheter placement. *J Trauma Acute Care Surg*, 2018. 85: 536.  
<https://pubmed.ncbi.nlm.nih.gov/29985241/>
278. Leddy, L.S., *et al.* Outcomes of endoscopic realignment of pelvic fracture associated urethral injuries at a level 1 trauma center. *J Urol*, 2012. 188: 174.  
<https://pubmed.ncbi.nlm.nih.gov/22591965/>
279. Elshout, P.J., *et al.* Outcomes of Early Endoscopic Realignment Versus Suprapubic Cystostomy and Delayed Urethroplasty for Pelvic Fracture-related Posterior Urethral Injuries: A Systematic Review. *Eur Urol Focus*, 2017. 3(6):545.  
<https://pubmed.ncbi.nlm.nih.gov/28753868/>
280. Warner, J.N., *et al.* The management of the acute setting of pelvic fracture urethral injury (realignment vs. suprapubic cystostomy alone). *Arab J Urol*, 2015. 13: 7.  
<https://pubmed.ncbi.nlm.nih.gov/26019971/>
281. Barrett, K., *et al.* Primary realignment vs suprapubic cystostomy for the management of pelvic fracture-associated urethral injuries: a systematic review and meta-analysis. *Urology*, 2014. 83: 924.  
<https://pubmed.ncbi.nlm.nih.gov/24680459/>
282. Tausch, T.J., *et al.* Unintended negative consequences of primary endoscopic realignment for men with pelvic fracture urethral injuries. *J Urol*, 2014. 192: 1720.  
<https://pubmed.ncbi.nlm.nih.gov/24972309/>
283. Horiguchi, A., *et al.* Primary Realignment for Pelvic Fracture Urethral Injury Is Associated With Prolonged Time to Urethroplasty and Increased Stenosis Complexity. *Urology*, 2017. 108: 184.  
<https://pubmed.ncbi.nlm.nih.gov/28606774/>
284. Koraitim, M.M. Effect of early realignment on length and delayed repair of postpelvic fracture urethral injury. *Urology*, 2012. 79: 912.  
<https://pubmed.ncbi.nlm.nih.gov/22342415/>
285. Lumen, N., *et al.* Perineal anastomotic urethroplasty for posttraumatic urethral stricture with or without previous urethral manipulations: a review of 61 cases with long-term followup. *J Urol*, 2009. 181: 1196.  
<https://pubmed.ncbi.nlm.nih.gov/19152939/>
286. Scarberry, K., *et al.* Delayed Posterior Urethroplasty Following Pelvic Fracture Urethral Injury: Do We Have to Wait 3 Months? *Urology*, 2018. 116:193.  
<https://pubmed.ncbi.nlm.nih.gov/29545047/>
287. Aboutaieb, R., *et al.* [Surgical treatment of traumatic ruptures of the posterior urethra]. *Prog Urol*, 2000. 10: 58.  
<https://pubmed.ncbi.nlm.nih.gov/10785920/>
288. Sfaxi, M., *et al.* [Surgical treatment of post-traumatic complete urethral rupture: deferred urgent urethral suture or delayed repair?]. *Prog Urol*, 2006. 16: 464.  
<https://pubmed.ncbi.nlm.nih.gov/17069041/>
289. Mundy, A.R. Anastomotic urethroplasty. *BJU Int*, 2005. 96: 921.  
<https://pubmed.ncbi.nlm.nih.gov/16153236/>
290. Lumen, N., *et al.*, European Association of Urology Guidelines on Urethral Strictures. In: *EAU Guidelines published at the 38th EAU Annual Congress, Milan 2023. Arnhem, The Netherlands.*  
<https://uroweb.org/guidelines/urethral-strictures>
291. Brandes, S.B., *et al.* External genitalia gunshot wounds: a ten-year experience with fifty-six cases. *J Trauma*, 1995. 39: 266.  
<https://pubmed.ncbi.nlm.nih.gov/7674395/>
292. McCormick, C.S., *et al.* Male genital trauma at a level 1 trauma center. *World J Urol*, 2020.  
<https://pubmed.ncbi.nlm.nih.gov/32077992/>
293. Monga, M., *et al.* Testicular Trauma. *Adolesc Med*, 1996. 7: 141.  
<https://pubmed.ncbi.nlm.nih.gov/10359963/>
294. Frauscher, F., *et al.* US findings in the scrotum of extreme mountain bikers. *Radiology*, 2001. 219: 427.  
<https://pubmed.ncbi.nlm.nih.gov/11323467/>

295. de Peretti, F., *et al.* [Fuel tanks of motorcycles. Role in severe trauma of the pelvis]. *Presse Med*, 1993. 22: 61.  
<https://pubmed.ncbi.nlm.nih.gov/8493205/>
296. Herrmann, B., *et al.* Genital injuries in prepubertal girls from inline skating accidents. *Pediatrics*, 2002. 110: e16.  
<https://pubmed.ncbi.nlm.nih.gov/12165615/>
297. Lawson, J.S., *et al.* Catastrophic injuries to the eyes and testicles in footballers. *Med J Aust*, 1995. 163: 242.  
<https://pubmed.ncbi.nlm.nih.gov/7565208/>
298. Grigorian, A., *et al.* National analysis of testicular and scrotal trauma in the USA. *Res Rep Urol*, 2018. 10: 51.  
<https://pubmed.ncbi.nlm.nih.gov/30128306/>
299. Maxwell, B.G., *et al.* National patterns of injury and outcomes of gunshot wounds to the penis: A Trauma Quality Programs retrospective cohort analysis. *Acute Med Surg*, 2021. 8: e636.  
<https://pubmed.ncbi.nlm.nih.gov/33747534/>
300. Gaspar, S.S., *et al.* Sexual Urological Emergencies. *Sex Med Revs*, 2015. 3: 93.  
<https://pubmed.ncbi.nlm.nih.gov/27784550/>
301. Forrester, M.B. Penis Ring Injuries Treated at Emergency Departments. *J Sex Marital Ther*, 2021: 1.  
<https://pubmed.ncbi.nlm.nih.gov/33734034/>
302. Amer, T., *et al.* Penile Fracture: A Meta-Analysis. *Urol Int*, 2016. 96: 315.  
<https://pubmed.ncbi.nlm.nih.gov/26953932/>
303. Christian-Miller, N., *et al.* Risk factors for penile fracture compared with a surgical control cohort in the United States: the role of substance abuse. *Asian J Androl*, 2021. 23: 236.  
<https://pubmed.ncbi.nlm.nih.gov/33243961/>
304. Haas, C.A., *et al.* Penile fracture and testicular rupture. *World J Urol*, 1999. 17: 101.  
<https://pubmed.ncbi.nlm.nih.gov/10367369/>
305. Barros, R., *et al.* Lessons learned after 20 years' experience with penile fracture. *Int Braz J Urol*, 2020. 46: 409.  
<https://pubmed.ncbi.nlm.nih.gov/32167705/>
306. Nicolaisen, G.S., *et al.* Rupture of the corpus cavernosum: surgical management. *J Urol*, 1983. 130: 917.  
<https://pubmed.ncbi.nlm.nih.gov/6632099/>
307. Tsang, T., *et al.* Penile fracture with urethral injury. *J Urol*, 1992. 147: 466.  
<https://pubmed.ncbi.nlm.nih.gov/1732623/>
308. De Luca, F., *et al.* Functional outcomes following immediate repair of penile fracture: a tertiary referral centre experience with 76 consecutive patients. *Scand J Urol*, 2017. 51: 170.  
<https://pubmed.ncbi.nlm.nih.gov/28125311/>
309. McGregor, M.J., *et al.* Sexual assault forensic medical examination: is evidence related to successful prosecution? *Ann Emerg Med*, 2002. 39: 639.  
<https://pubmed.ncbi.nlm.nih.gov/12023707/>
310. Phonsombat, S., *et al.* Penetrating external genital trauma: a 30-year single institution experience. *J Urol*, 2008. 180: 192.  
<https://pubmed.ncbi.nlm.nih.gov/18499189/>
311. Selikowitz, S.M. Penetrating high-velocity genitourinary injuries. Part I. Statistics mechanisms, and renal wounds. *Urology*, 1977. 9: 371.  
<https://pubmed.ncbi.nlm.nih.gov/855062/>
312. Hudak, S.J., *et al.* Operative management of wartime genitourinary injuries at Balad Air Force Theater Hospital, 2005 to 2008. *J Urol*, 2009. 182: 180.  
<https://pubmed.ncbi.nlm.nih.gov/19450817/>
313. Cass, A.S., *et al.* Bilateral testicular injury from external trauma. *J Urol*, 1988. 140: 1435.  
<https://pubmed.ncbi.nlm.nih.gov/3193512/>
314. McAninch, J.W., *et al.* Major traumatic and septic genital injuries. *J Trauma*, 1984. 24: 291.  
<https://pubmed.ncbi.nlm.nih.gov/6368854/>
315. Michielsen, D., *et al.* Burns to the genitalia and the perineum. *J Urol*, 1998. 159: 418.  
<https://pubmed.ncbi.nlm.nih.gov/9649253/>
316. Nelius, T., *et al.* Genital piercings: diagnostic and therapeutic implications for urologists. *Urology*, 2011. 78: 998.  
<https://pubmed.ncbi.nlm.nih.gov/22054364/>
317. Lee, J.Y., *et al.* Traumatic dislocation of testes and bladder rupture. *Urology*, 1992. 40: 506.  
<https://pubmed.ncbi.nlm.nih.gov/1466102/>

318. Nagarajan, V.P., *et al.* Traumatic dislocation of testis. *Urology*, 1983. 22: 521.  
<https://pubmed.ncbi.nlm.nih.gov/6649208/>
319. Pollen, J.J., *et al.* Traumatic dislocation of the testes. *J Trauma*, 1982. 22: 247.  
<https://pubmed.ncbi.nlm.nih.gov/7069812/>
320. Shefi, S., *et al.* Traumatic testicular dislocation: a case report and review of published reports. *Urology*, 1999. 54: 744.  
<https://pubmed.ncbi.nlm.nih.gov/10754145/>
321. Cass, A.S., *et al.* Testicular injuries. *Urology*, 1991. 37: 528.  
<https://pubmed.ncbi.nlm.nih.gov/2038785/>
322. Wang, Z., *et al.* Diagnosis and management of testicular rupture after blunt scrotal trauma: a literature review. *Int Urol Nephrol*, 2016. 48: 1967.  
<https://pubmed.ncbi.nlm.nih.gov/27567912/>
323. Wasko, R., *et al.* Traumatic rupture of the testicle. *J Urol*, 1966. 95: 721.  
<https://pubmed.ncbi.nlm.nih.gov/5935538/>
324. Tchounzou, R., *et al.* Retrospective Analysis of Clinical Features, Treatment and Outcome of Coital Injuries of the Female Genital Tract Consecutive to Consensual Sexual Intercourse in the Limbe Regional Hospital. *Sex Med*, 2015. 3: 256.  
<https://pubmed.ncbi.nlm.nih.gov/26797059/>
325. Sotto, L.S., *et al.* Perigenital hematomas; analysis of forty-seven consecutive cases. *Obstet Gynecol*, 1958. 12: 259.  
<https://pubmed.ncbi.nlm.nih.gov/13578292/>
326. DA., H. Editorial Comment. *J Urol* 1998. 159: 959.  
<https://pubmed.ncbi.nlm.nih.gov/31345289/>
327. Okur, H., *et al.* Genitourinary tract injuries in girls. *Br J Urol*, 1996. 78: 446.  
<https://pubmed.ncbi.nlm.nih.gov/8881959/>
328. Goldman, H.B., *et al.* Traumatic injuries of the female external genitalia and their association with urological injuries. *J Urol*, 1998. 159: 956.  
<https://pubmed.ncbi.nlm.nih.gov/9474191/>
329. Karadeniz, T., *et al.* Penile fracture: differential diagnosis, management and outcome. *Br J Urol*, 1996. 77: 279.  
<https://pubmed.ncbi.nlm.nih.gov/8800899/>
330. Fedel, M., *et al.* The value of magnetic resonance imaging in the diagnosis of suspected penile fracture with atypical clinical findings. *J Urol*, 1996. 155: 1924.  
<https://pubmed.ncbi.nlm.nih.gov/8618289/>
331. Pretorius, E.S., *et al.* MR imaging of the penis. *Radiographics*, 2001. 21 Spec No: S283.  
<https://pubmed.ncbi.nlm.nih.gov/11598264/>
332. Uder, M., *et al.* MRI of penile fracture: diagnosis and therapeutic follow-up. *Eur Radiol*, 2002. 12: 113.  
<https://pubmed.ncbi.nlm.nih.gov/11868085/>
333. Buckley, J.C., *et al.* Diagnosis and management of testicular ruptures. *Urol Clin North Am*, 2006. 33: 111.  
<https://pubmed.ncbi.nlm.nih.gov/16488285/>
334. Spiesecke, P., *et al.* Diagnostic performance of MRI and US in suspicion of penile fracture. *Transl Androl Urol*, 2022. 11: 377.  
<https://pubmed.ncbi.nlm.nih.gov/35402188/>
335. Andipa, E., *et al.* Magnetic resonance imaging and ultrasound evaluation of penile and testicular masses. *World J Urol*, 2004. 22: 382.  
<https://pubmed.ncbi.nlm.nih.gov/15300391/>
336. Corrales, J.G., *et al.* Accuracy of ultrasound diagnosis after blunt testicular trauma. *J Urol*, 1993. 150: 1834.  
<https://pubmed.ncbi.nlm.nih.gov/8080482/>
337. Fournier, G.R., Jr., *et al.* Scrotal ultrasonography and the management of testicular trauma. *Urol Clin North Am*, 1989. 16: 377.  
<https://pubmed.ncbi.nlm.nih.gov/2652862/>
338. Kratzik, C., *et al.* Has ultrasound influenced the therapy concept of blunt scrotal trauma? *J Urol*, 1989. 142: 1243.  
<https://pubmed.ncbi.nlm.nih.gov/2681835/>
339. Martinez-Pineiro, L., Jr., *et al.* Value of testicular ultrasound in the evaluation of blunt scrotal trauma without haematocele. *Br J Urol*, 1992. 69: 286.  
<https://pubmed.ncbi.nlm.nih.gov/1568102/>

340. Micallef, M., *et al.* Ultrasound features of blunt testicular injury. *Injury*, 2001. 32: 23.  
<https://pubmed.ncbi.nlm.nih.gov/11164397/>
341. Mulhall, J.P., *et al.* Emergency management of blunt testicular trauma. *Acad Emerg Med*, 1995. 2: 639.  
<https://pubmed.ncbi.nlm.nih.gov/8521212/>
342. Patil, M.G., *et al.* The value of ultrasound in the evaluation of patients with blunt scrotal trauma. *Injury*, 1994. 25: 177.  
<https://pubmed.ncbi.nlm.nih.gov/8168890/>
343. Churukanti, G.R., *et al.* Role of Ultrasonography for Testicular Injuries in Penetrating Scrotal Trauma. *Urology*, 2016. 95: 208.  
<https://pubmed.ncbi.nlm.nih.gov/27132505/>
344. Lee, S.H., *et al.* Trauma to male genital organs: a 10-year review of 156 patients, including 118 treated by surgery. *BJU Int*, 2008. 101: 211.  
<https://pubmed.ncbi.nlm.nih.gov/17922859/>
345. Muglia, V., *et al.* Magnetic resonance imaging of scrotal diseases: when it makes the difference. *Urology*, 2002. 59: 419.  
<https://pubmed.ncbi.nlm.nih.gov/11880084/>
346. Ramanathan, S., *et al.* Imaging in scrotal trauma: a European Society of Urogenital Radiology Scrotal and Penile Imaging Working Group (ESUR-SPIWG) position statement. *Eur Radiol*, 2021. 31: 4918.  
<https://pubmed.ncbi.nlm.nih.gov/33449189/>
347. Talan, D.A., *et al.* Bacteriologic analysis of infected dog and cat bites. Emergency Medicine Animal Bite Infection Study Group. *N Engl J Med*, 1999. 340: 85.  
<https://pubmed.ncbi.nlm.nih.gov/9887159/>
348. Presutti, R.J. Bite wounds. Early treatment and prophylaxis against infectious complications. *Postgrad Med*, 1997. 101: 243.  
<https://pubmed.ncbi.nlm.nih.gov/9126216/>
349. Lewis, K.T., *et al.* Management of cat and dog bites. *Am Fam Physician*, 1995. 52: 479.  
<https://pubmed.ncbi.nlm.nih.gov/7625323/>
350. Dreesen, D.W., *et al.* Current recommendations for the prophylaxis and treatment of rabies. *Drugs*, 1998. 56: 801.  
<https://pubmed.ncbi.nlm.nih.gov/9829154/>
351. Anderson, C.R. Animal bites. Guidelines to current management. *Postgrad Med*, 1992. 92: 134.  
<https://pubmed.ncbi.nlm.nih.gov/1614928/>
352. Gee, S., *et al.* on behalf of the North West Policy Group. Guidance for the Management of Human Bite Injuries. 2010.  
[https://webarchive.nationalarchives.gov.uk/ukgwa/20140714084352/http://www.hpa.org.uk/webc/HPAwebFile/HPAweb\\_C/1194947350692](https://webarchive.nationalarchives.gov.uk/ukgwa/20140714084352/http://www.hpa.org.uk/webc/HPAwebFile/HPAweb_C/1194947350692)
353. Summerton, D.J., *et al.* Reconstructive surgery in penile trauma and cancer. *Nat Clin Pract Urol*, 2005. 2: 391.  
<https://pubmed.ncbi.nlm.nih.gov/16474736/>
354. Mydlo, J.H., *et al.* Urethrography and cavernosography imaging in a small series of penile fractures: a comparison with surgical findings. *Urology*, 1998. 51: 616.  
<https://pubmed.ncbi.nlm.nih.gov/9586616/>
355. Penbegul, N., *et al.* No evidence of depression, anxiety, and sexual dysfunction following penile fracture. *Int J Impot Res*, 2012. 24: 26.  
<https://pubmed.ncbi.nlm.nih.gov/21918532/>
356. Kominsky, H., *et al.* Surgical reconstruction for penile fracture: a systematic review. *Int J Impot Res*, 2020. 32: 75.  
<https://pubmed.ncbi.nlm.nih.gov/31685943/>
357. Virasoro, R., *et al.* Penile Amputation: Cosmetic and Functional Results. *Sex Med Revs*, 2015. 3: 214.  
<https://pubmed.ncbi.nlm.nih.gov/27784611/>
358. Babaei, A.R., *et al.* Penile replantation, science or myth? A systematic review. *Urol J*, 2007. 4: 62.  
<https://pubmed.ncbi.nlm.nih.gov/17701923/>
359. Koller, C.R., *et al.* Self-Induced Trauma to the Genitalia: a Review of the Literature and Management Schemes. *Curr Urol Rep*, 2021. 22: 18.  
<https://pubmed.ncbi.nlm.nih.gov/33534050/>
360. Tiguert, R., *et al.* Management of shotgun injuries to the pelvis and lower genitourinary system. *Urology*, 2000. 55: 193.  
<https://pubmed.ncbi.nlm.nih.gov/10688077/>
361. Altarac, S. Management of 53 cases of testicular trauma. *Eur Urol*, 1994. 25: 119.  
<https://pubmed.ncbi.nlm.nih.gov/8137851/>

362. Cass, A.S., *et al.* Value of early operation in blunt testicular contusion with hematocele. *J Urol*, 1988. 139: 746.  
<https://pubmed.ncbi.nlm.nih.gov/3352037/>
363. Altarac, S. A case of testicle replantation. *J Urol*, 1993. 150: 1507.  
<https://pubmed.ncbi.nlm.nih.gov/8411440/>
364. Abid, A.F., *et al.* Penetrating Scrotal Injuries: A War Time Experience in a Civilian Setup. *Open Access Macedonian J Med Sci*, 2021. 9: 1198.  
<https://oamjms.eu/index.php/mjms/article/view/6888>
365. Sharma, G., *et al.* Sexual function outcomes and risk factors of erectile dysfunction after surgical repair of penile fracture. *Turk J Urol*, 2021. 47: 106.  
<https://pubmed.ncbi.nlm.nih.gov/33052833/>
366. Bulbul, E., *et al.* Penile fracture: Tertiary care center experience and long-term complications after immediate repair. *Andrology*, 2022. 10: 560.  
<https://pubmed.ncbi.nlm.nih.gov/34939748/>
367. Bozzini, G., *et al.* Delaying Surgical Treatment of Penile Fracture Results in Poor Functional Outcomes: Results from a Large Retrospective Multicenter European Study. *Eur Urol Focus*, 2018. 4: 106.  
<https://pubmed.ncbi.nlm.nih.gov/28753754/>
368. Orvis, B.R., *et al.* Penile rupture. *Urol Clin North Am*, 1989. 16: 369.  
<https://pubmed.ncbi.nlm.nih.gov/2652861/>
369. Etabbal, A.M., *et al.* War-related penile injuries in Libya: Single-institution experience. *Arab J Urol*, 2018.  
<https://pubmed.ncbi.nlm.nih.gov/29892491/>
370. Starmer, B.Z., *et al.* Considerations in fertility preservation in cases of testicular trauma. *BJU Int*, 2018. 121: 466.  
<https://pubmed.ncbi.nlm.nih.gov/29164757/>

## 6. CONFLICT OF INTEREST

All members of the Urological Trauma Guidelines working group have provided disclosure statements of all relationships that they have that might be perceived as a potential source of a conflict of interest. This information is publicly accessible through the European Association of Urology website: <http://uroweb.org/guideline>. This guidelines document was developed with the financial support of the European Association of Urology. No external sources of funding and support have been involved. The EAU is a non-profit organisation and funding is limited to administrative assistance and travel and meeting expenses. No honoraria or other reimbursements have been provided.

## 7. CITATION INFORMATION

The format in which to cite the EAU Guidelines will vary depending on the style guide of the journal in which the citation appears. Accordingly, the number of authors or whether, for instance, to include the publisher, location, or an ISBN number may vary.

The compilation of the complete Guidelines should be referenced as:

*EAU Guidelines. Edn. presented at the EAU Annual Congress Paris 2024. ISBN 978-94-92671-23-3.*

If a publisher and/or location is required, include:

*EAU Guidelines Office, Arnhem, the Netherlands. <http://uroweb.org/guidelines/compilations-of-all-guidelines/>*

References to individual guidelines should be structured in the following way:

*Contributors' names. Title of resource. Publication type. ISBN. Publisher and publisher location, year.*